

FLOOR PLAN LAYOUT

TOWER C



- | | |
|--|---|
|  1 BED UNIT |  LOBBIES, CORRIDORS & STAIRS |
|  2 BED UNIT |  LIFTS |
|  3 BED UNIT | |

Disclaimer: 1. All dimensions are in metric, measured to wall finishes. 2. All materials, dimensions & drawings are approximate. 3. Information is subject to change without notice, at developer's absolute discretion. 4. Actual area may vary from the stated area. 5. Drawing are not to scale. 6. All images used are for illustrative purpose only and do not represent the actual size, features, specifications, fittings and furnishings. 7. The developer reserves the right to make revisions/ alterations, at its absolute discretion, without any liability whatsoever.

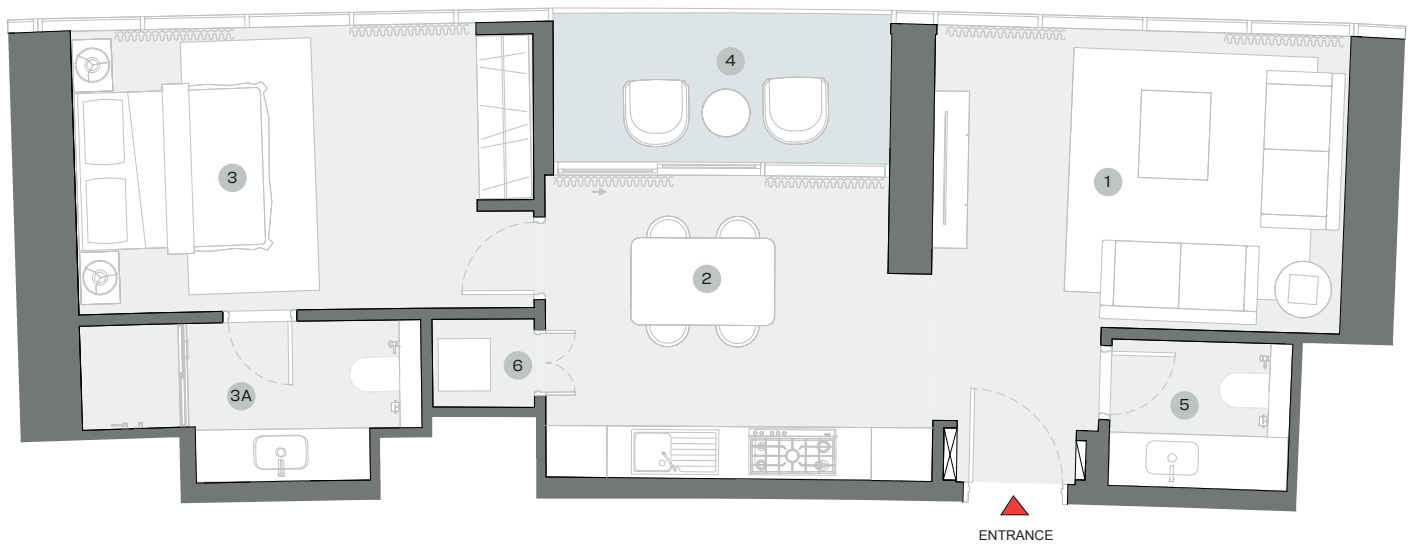
1 BEDROOM APARTMENT

TYPE A (with powder room + balcony)

SUITE = 769.30 SQ.FT
BALCONY = 81.91 SQ.FT
TOTAL = 851.21 SQ.FT



UNIT



List of unit numbers with this unit plan:

VIEWS

Marina Skyline

C1106, C1206, C1306, C1406, C1506, C1606, C1706, C1806, C1906, C2006, C2106, C2206, C2306, C2406, C2506, C2606, C2706, C2806, C2906, C3006, C3106

DIMENSIONS (MM)

1 LIVING - 4700 X 3400	3 BEDROOM - 4600 X 3250	4 BALCONY - 3900 X 1700
2 KITCHEN/DINING - 3950 X 3450	3A BATHROOM - 3900 X 1850	5 POWDER - 2050 X 1700
		6 UTILITY - 1150 X 1000

Disclaimer: 1. All dimensions are in metric, measured to wall finishes. 2. All materials, dimensions & drawings are approximate. 3. Information is subject to change without notice, at developer's absolute discretion. 4. Actual area may vary from the stated area. 5. Drawing are not to scale. 6. All images used are for illustrative purpose only and do not represent the actual size, features, specifications, fittings and furnishings. 7. The developer reserves the right to make revisions/ alterations, at its absolute discretion, without any liability whatsoever.

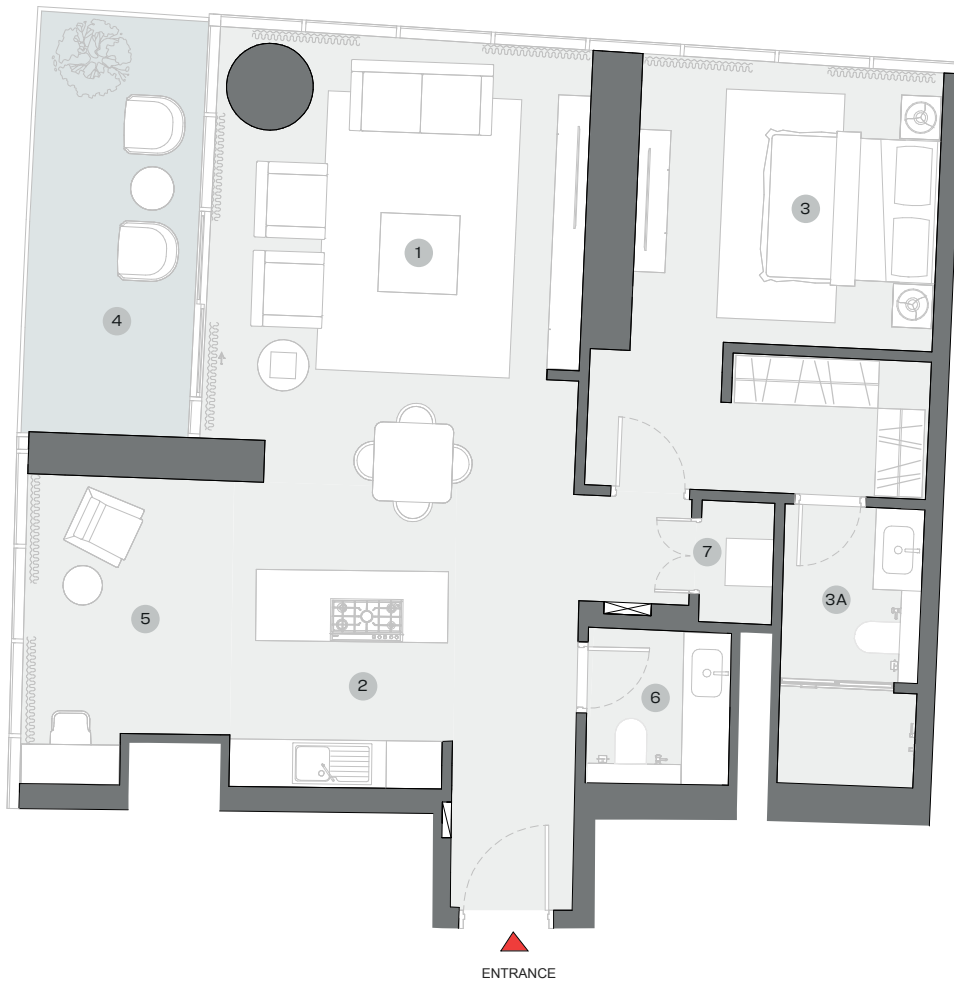
1 BEDROOM APARTMENT

TYPE B (with powder room + study room + balcony)

SUITE = 1,107.93 SQ.FT
BALCONY = 131.21 SQ.FT
TOTAL = 1,239.14 SQ.FT



UNIT



List of unit numbers with this unit plan:

VIEWS

Marina Skyline

C1107, C1207, C1307, C1407, C1507, C1607, C1707, C1807, C1907, C2007, C2107, C2207, C2307, C2407, C2507, C2607, C2707, C2807, C2907, C3007, C3107

DIMENSIONS (MM)

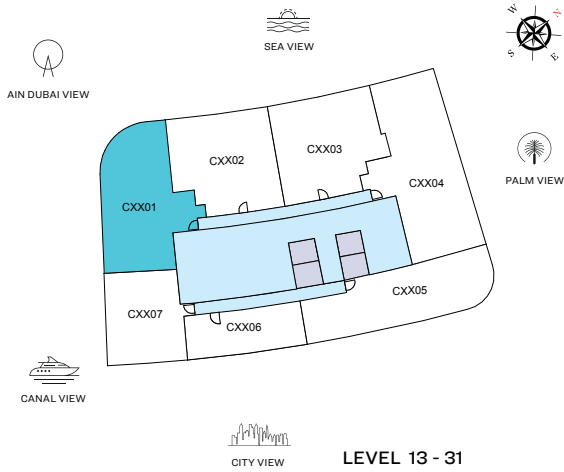
1 LIVING - 4700 X 5200	3 BEDROOM - 3800 X 3550	5 STUDY - 2600 X 3200
2 KITCHEN/DINING - 2800 X 4400	3A BATHROOM - 1700 X 3550	6 POWDER - 1800 X 1950
	4 BALCONY - 2150 X 5300	7 UTILITY - 900 X 1550

Disclaimer: 1. All dimensions are in metric, measured to wall finishes. 2. All materials, dimensions & drawings are approximate. 3. Information is subject to change without notice, at developer's absolute discretion. 4. Actual area may vary from the stated area. 5. Drawing are not to scale. 6. All images used are for illustrative purpose only and do not represent the actual size, features, specifications, fittings and furnishings. 7. The developer reserves the right to make revisions/ alterations, at its absolute discretion, without any liability whatsoever.

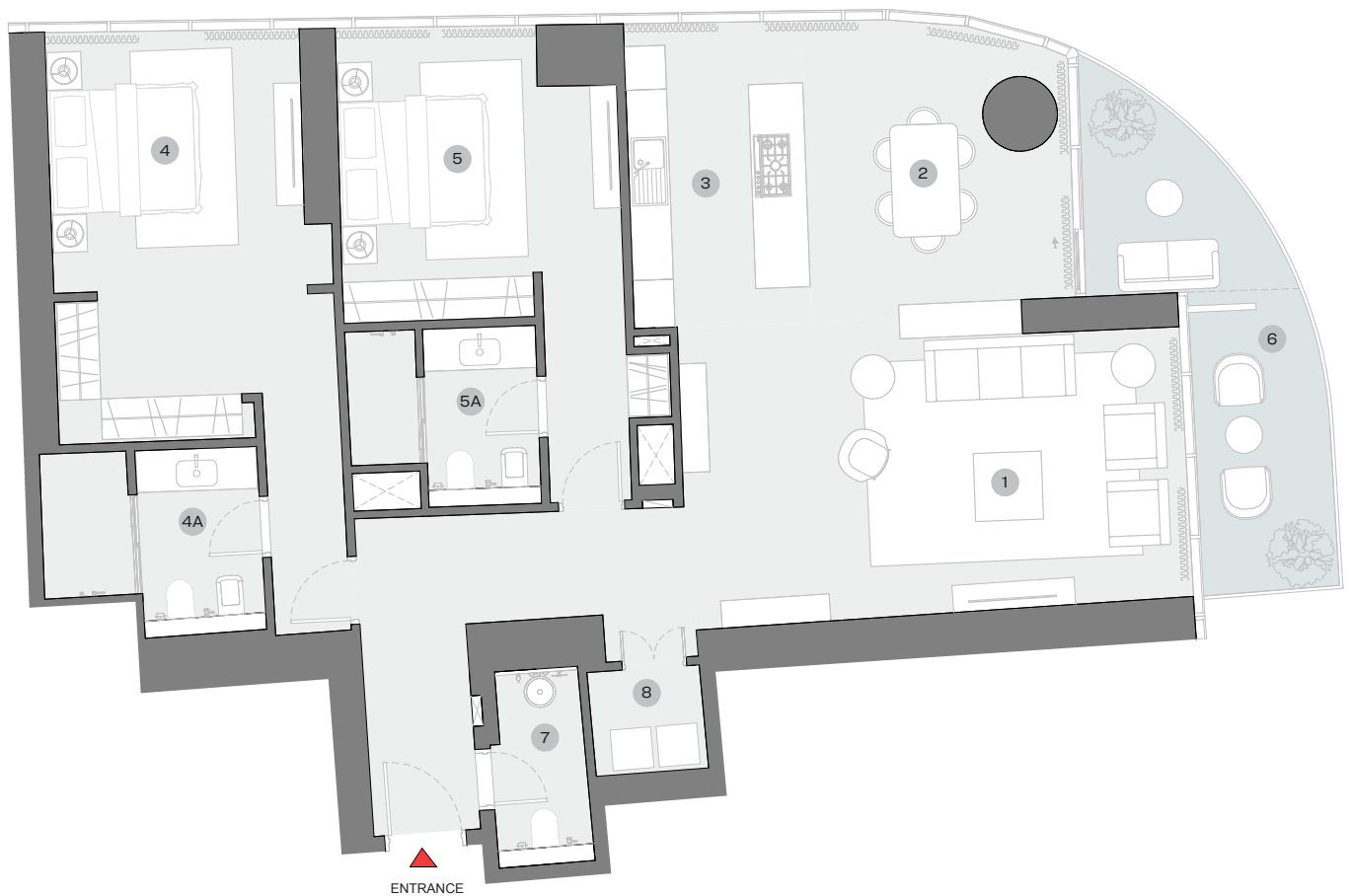
2 BEDROOM APARTMENT

TYPE A (with powder room + balcony)

SUITE = 1,728.04 SQ.FT
BALCONY = 186.11 SQ.FT
TOTAL = 1,914.15 SQ.FT



UNIT



List of unit numbers with this unit plan:

VIEWS

Blue waters, Ain Dubai, Palm Jumeirah, Harbour, Sea, Skydive

C1301, C1401, C1501, C1601, C1701, C1801, C1901, C2001, C2101, C2201, C2301, C2401, C2501, C2601, C2701, C2801, C2901, C3001, C3101

DIMENSIONS (MM)

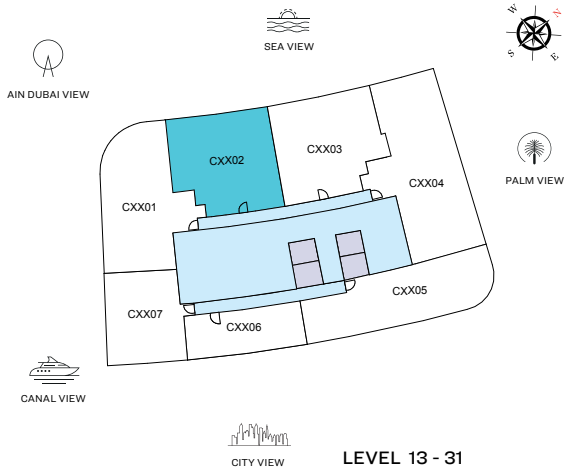
1 LIVING - 7400 X 4300	4 BEDROOM 1 - 3750 X 5350	6 BALCONY - 2000 X 4700
2 DINING - 3900 X 4400	4A BATHROOM 1 - 3200 X 2750	7 POWDER - 1400 X 2900
3 KITCHEN - 2600 X 4500	5 BEDROOM 2 - 4100 X 3650	8 UTILITY - 1650 X 1500
	5A BATHROOM 2 - 2800 X 2600	

Disclaimer: 1. All dimensions are in metric, measured to wall finishes. 2. All materials, dimensions & drawings are approximate. 3. Information is subject to change without notice, at developer's absolute discretion. 4. Actual area may vary from the stated area. 5. Drawing are not to scale. 6. All images used are for illustrative purpose only and do not represent the actual size, features, specifications, fittings and furnishings. 7. The developer reserves the right to make revisions/ alterations, at its absolute discretion, without any liability whatsoever.

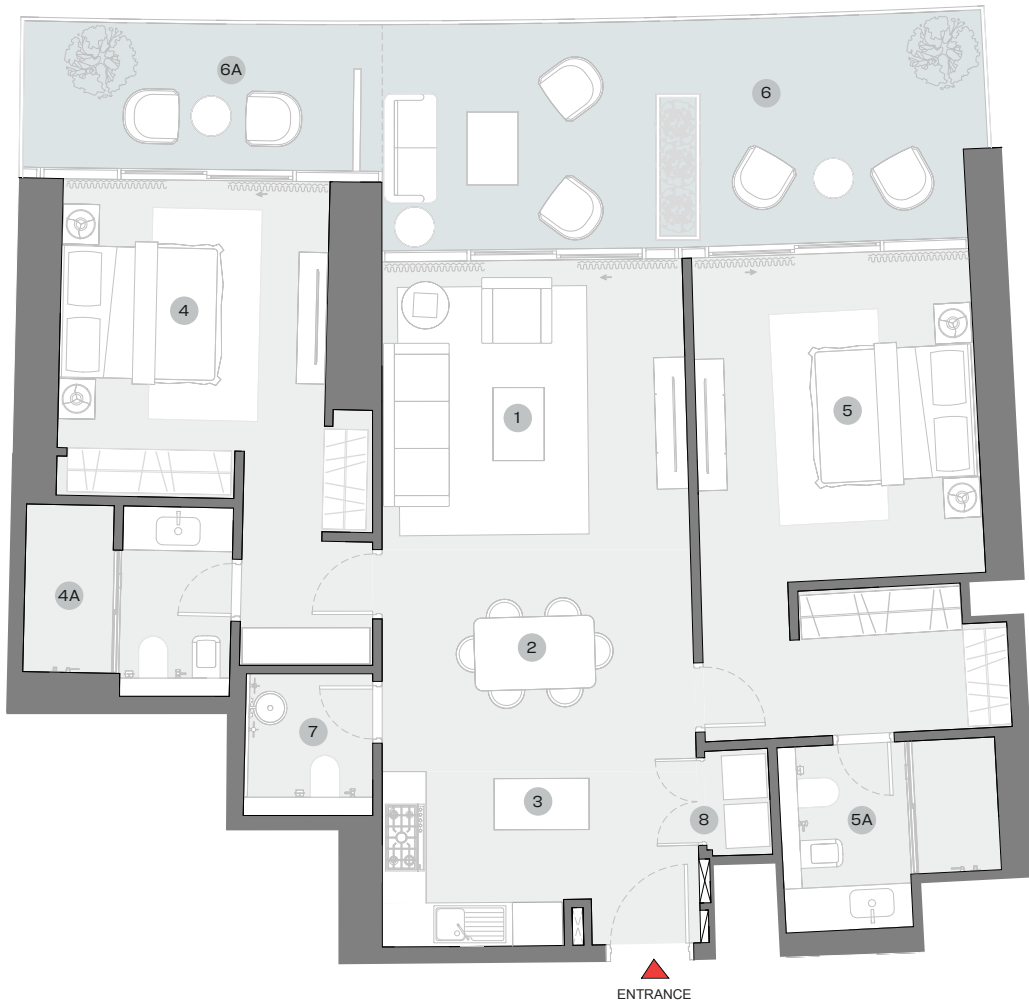
2 BEDROOM APARTMENT

TYPE B (with powder room + balcony)

SUITE = 1,287.47 SQ.FT
BALCONY = 396.00 SQ.FT
TOTAL = 1,683.47 SQ.FT



UNIT



List of unit numbers with this unit plan:

VIEWS

Palm Jumeirah, Harbour, Sea

C1302, C1402, C1502, C1602, C1702, C1802, C1902, C2002, C2102, C2202, C2302, C2402, C2502, C2602, C2702, C2802, C2902, C3002, C3102

DIMENSIONS (MM)

1 LIVING - 4200 X 4000	4 BEDROOM 1 - 3600 X 3700	6 BALCONY - 8250 X 3100
2 DINING - 4250 X 2800	4A BATHROOM 1 - 2800 X 2600	6A BALCONY 2 - 4650 X 2000
3 KITCHEN - 2850 X 2500	5 BEDROOM 2 - 3800 X 4450	7 POWDER - 1750 X 1950
	5A BATHROOM 2 - 3000 X 2550	8 UTILITY - 850 X 1450

Disclaimer: 1. All dimensions are in metric, measured to wall finishes. 2. All materials, dimensions & drawings are approximate. 3. Information is subject to change without notice, at developer's absolute discretion. 4. Actual area may vary from the stated area. 5. Drawing are not to scale. 6. All images used are for illustrative purpose only and do not represent the actual size, features, specifications, fittings and furnishings. 7. The developer reserves the right to make revisions/ alterations, at its absolute discretion, without any liability whatsoever.

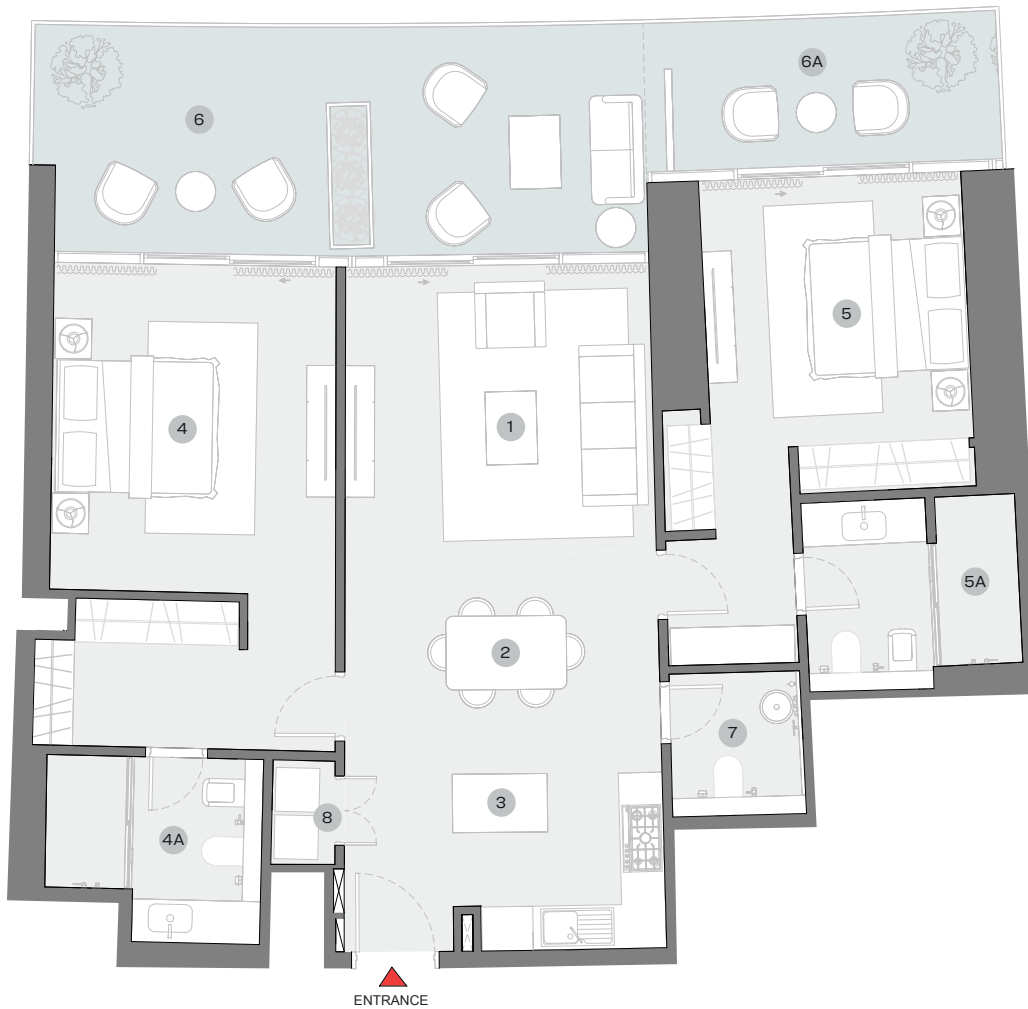
2 BEDROOM APARTMENT

TYPE C (with powder room + balcony)

SUITE = 1,288.44 SQ.FT
BALCONY = 398.59 SQ.FT
TOTAL = 1,687.03 SQ.FT



UNIT



List of unit numbers with this unit plan:

VIEWS

Palm Jumeirah, Harbour, Sea

C1303, C1403, C1503, C1603, C1703, C1803, C1903, C2003, C2103, C2203, C2303, C2403, C2503, C2603, C2703, C2803, C2903, C3003, C3103

DIMENSIONS (MM)

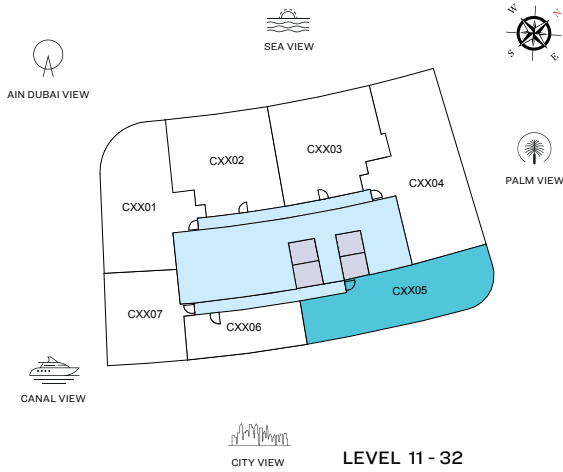
1 LIVING - 4200 X 4000	4 BEDROOM 1 - 3850 X 4450	6 BALCONY - 8450 X 3100
2 DINING - 4300 X 2800	4A BATHROOM 1 - 3000 X 2550	6A BALCONY 2 - 4900 X 2000
3 KITCHEN - 2850 X 2500	5 BEDROOM 2 - 3600 X 3700	7 POWDER - 1800 X 1950
	5A BATHROOM 2 - 2900 X 2600	8 UTILITY - 850 X 1450

Disclaimer: 1. All dimensions are in metric, measured to wall finishes. 2. All materials, dimensions & drawings are approximate. 3. Information is subject to change without notice, at developer's absolute discretion. 4. Actual area may vary from the stated area. 5. Drawing are not to scale. 6. All images used are for illustrative purpose only and do not represent the actual size, features, specifications, fittings and furnishings. 7. The developer reserves the right to make revisions/ alterations, at its absolute discretion, without any liability whatsoever.

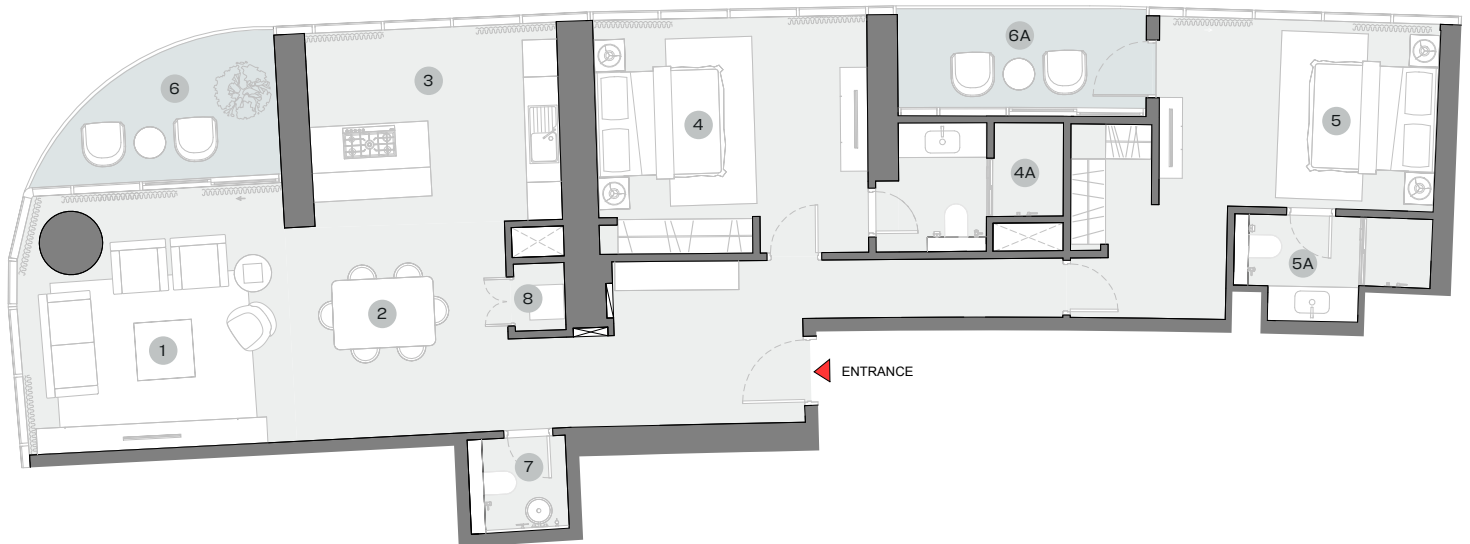
2 BEDROOM APARTMENT

TYPE D (with powder room + balcony)

SUITE = 1,534.61 SQ.FT
BALCONY = 188.26 SQ.FT
TOTAL = 1,722.87 SQ.FT



UNIT



List of unit numbers with this unit plan:

VIEWS

Marina Skyline

C1305, C1405, C1505, C1605, C1705, C1805, C1905, C2005, C2105, C2205, C2305, C2405, C2505, C2605, C2705, C2805, C2905, C3005, C3105

DIMENSIONS (MM)

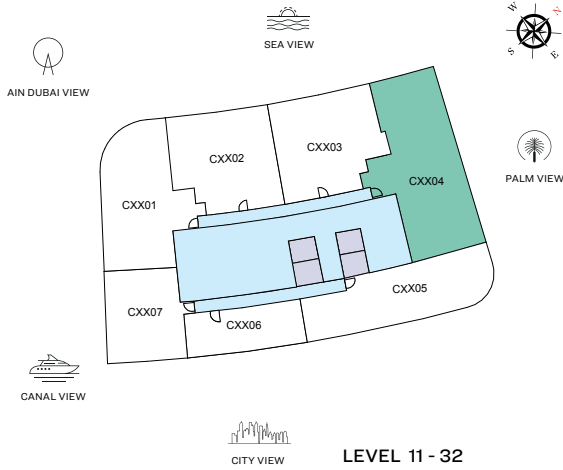
1 LIVING - 4650 X 4500	4 BEDROOM 1 - 4700 X 3450	6 BALCONY - 0000 X 0000
2 DINING - 3750 X 3700	4A BATHROOM 1 - 3250 X 2200	6A BALCONY 2 - 4300 X 1700
3 KITCHEN - 4300 X 3350	5 BEDROOM 2 - 4750 X 3250	7 POWDER - 1700 X 1650
	5A BATHROOM 2 - 3400 X 1850	8 UTILITY - 900 X 1150

Disclaimer: 1. All dimensions are in metric, measured to wall finishes. 2. All materials, dimensions & drawings are approximate. 3. Information is subject to change without notice, at developer's absolute discretion. 4. Actual area may vary from the stated area. 5. Drawing are not to scale. 6. All images used are for illustrative purpose only and do not represent the actual size, features, specifications, fittings and furnishings. 7. The developer reserves the right to make revisions/ alterations, at its absolute discretion, without any liability whatsoever.

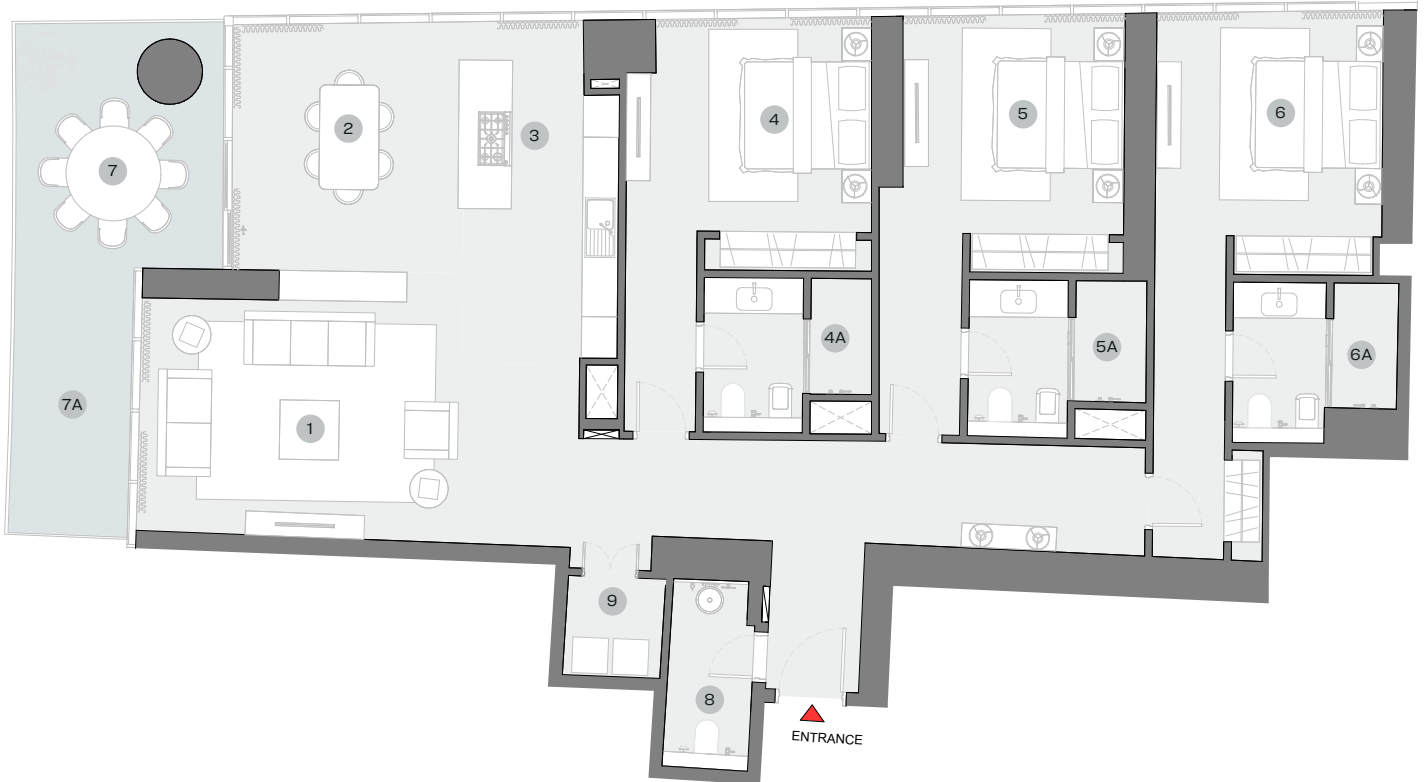
3 BEDROOM APARTMENT

TYPE A (with powder room + balcony)

SUITE = 2,124.69 SQ.FT
BALCONY = 271.36 SQ.FT
TOTAL = 2,396.05 SQ.FT



UNIT



List of unit numbers with this unit plan:

VIEWS

Palm Jumeirah, Harbour, Sea

C1304, C1404, C1504, C1604, C1704, C1804, C1904, C2004, C2104, C2204, C2304, C2404, C2504, C2604, C2704, C2804, C2904, C3004, C3104

DIMENSIONS (MM)

1 LIVING - 7400 X 4250	4A BATHROOM 1 - 2800 X 2600	6A BATHROOM 3 - 2800 X 2700
2 DINING - 3800 X 4400	5 BEDROOM 2 - 3750 X 3650	7 BALCONY - 3500 X 4150
3 KITCHEN - 2700 X 4400	5A BATHROOM 2 - 3000 X 2650	7A BALCONY 2 - 2000 X 4750
4 BEDROOM 1 - 4150 X 3550	6 BEDROOM 3 - 3800 X 3750	8 POWDER - 1400 X 3150
		9 UTILITY - 1650 X 1650

Disclaimer: 1. All dimensions are in metric, measured to wall finishes. 2. All materials, dimensions & drawings are approximate. 3. Information is subject to change without notice, at developer's absolute discretion. 4. Actual area may vary from the stated area. 5. Drawing are not to scale. 6. All images used are for illustrative purpose only and do not represent the actual size, features, specifications, fittings and furnishings. 7. The developer reserves the right to make revisions/ alterations, at its absolute discretion, without any liability whatsoever.