



**PAYMENT PLAN**

INSTALLMENT	MILESTONE	PAYMENT
1	Upon Reservation	10%
2	Within 14 days of reservation	90%

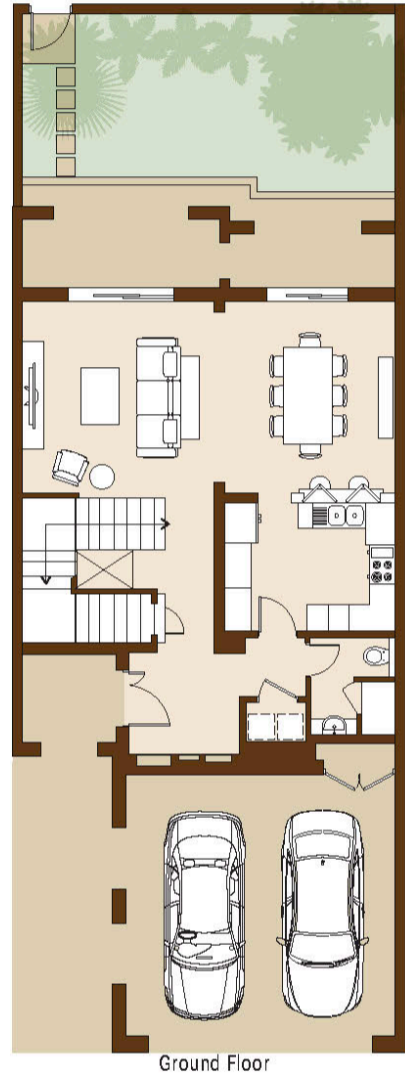
UNIT	VIEW	BEDROOMS	TYPE	UNIT AREA	INTERNAL AREA	EXTERNAL AREA	LIST PRICE (AED)	FURNISHED
MV-27		2	5B	2,821.01	2,821.01		2,790,000.00	No
MV-38		2	5B	2,802.17	2,802.17		2,771,000.00	No
MV-39		2	5B	2,821.01	2,821.01		2,790,000.00	No
MV-52		2	5B	2,802.17	2,802.17		2,771,000.00	No
MV-53		2	5B	2,821.01	2,821.01		2,790,000.00	No
MV-66		2	5B	2,802.17	2,802.17		2,771,000.00	No
MV-67		2	5B	2,821.01	2,821.01		2,790,000.00	No
MV-80		2	5B	2,802.17	2,802.17		2,771,000.00	No
MV-81		2	5B	2,821.01	2,821.01		2,790,000.00	No
MV-34		2	5B(M)	2,821.01	2,821.01		2,790,000.00	No
MV-48		2	5B(M)	2,821.01	2,821.01		2,790,000.00	No
MV-49		2	5B(M)	2,802.17	2,802.17		2,771,000.00	No
MV-62		2	5B(M)	2,821.01	2,821.01		2,790,000.00	No
MV-63		2	5B(M)	2,802.17	2,802.17		2,771,000.00	No
MV-76		2	5B(M)	2,821.01	2,821.01		2,790,000.00	No
MV-77		2	5B(M)	2,802.17	2,802.17		2,771,000.00	No
MV-90		2	5B(M)	2,821.01	2,821.01		2,790,000.00	No
MV-91		2	5B(M)	2,802.17	2,802.17		2,771,000.00	No
MV-26		2	5C	2,828.33	2,828.33		2,797,000.00	No
MV-40		2	5C	2,828.33	2,828.33		2,797,000.00	No
MV-54		2	5C	2,828.33	2,828.33		2,797,000.00	No
MV-68		2	5C	2,828.33	2,828.33		2,797,000.00	No
MV-82		2	5C	2,828.33	2,828.33		2,797,000.00	No
MV-33		2	5C(M)	2,828.33	2,828.33		2,797,000.00	No
MV-47		2	5C(M)	2,828.33	2,828.33		2,797,000.00	No
MV-61		2	5C(M)	2,828.33	2,828.33		2,797,000.00	No
MV-75		2	5C(M)	2,828.33	2,828.33		2,797,000.00	No
MV-29		3	5A	3,407.64	3,407.64		3,544,000.00	No
MV-32		3	5A	3,408.82	3,408.82		3,579,000.00	No
MV-37		3	5A	3,407.64	3,407.64		3,544,000.00	No
MV-51		3	5A	3,407.64	3,407.64		3,544,000.00	No
MV-60		3	5A	3,408.82	3,408.82		3,579,000.00	No
MV-65		3	5A	3,407.64	3,407.64		3,544,000.00	No
MV-74		3	5A	3,408.82	3,408.82		3,545,000.00	No
MV-25		3	5A(M)	3,408.82	3,408.82		3,579,000.00	No
MV-36		3	5A(M)	3,407.64	3,407.64		3,544,000.00	No
MV-41		3	5A(M)	3,408.82	3,408.82		3,579,000.00	No
MV-50		3	5A(M)	3,407.64	3,407.64		3,544,000.00	No
MV-64		3	5A(M)	3,407.64	3,407.64		3,544,000.00	No
MV-78		3	5A(M)	3,407.64	3,407.64		3,544,000.00	No
MV-92		3	5A(M)	3,407.64	3,407.64		3,544,000.00	No
MV-104		3	6A	3,402.26	3,402.26		3,742,000.00	No
MV-96		3	6A	3,402.26	3,402.26		3,538,000.00	No
MV-93		3	6A(M)	3,402.26	3,402.26		3,742,000.00	No
MV-97		3	6A(M)	3,402.26	3,402.26		3,538,000.00	No

# 5B

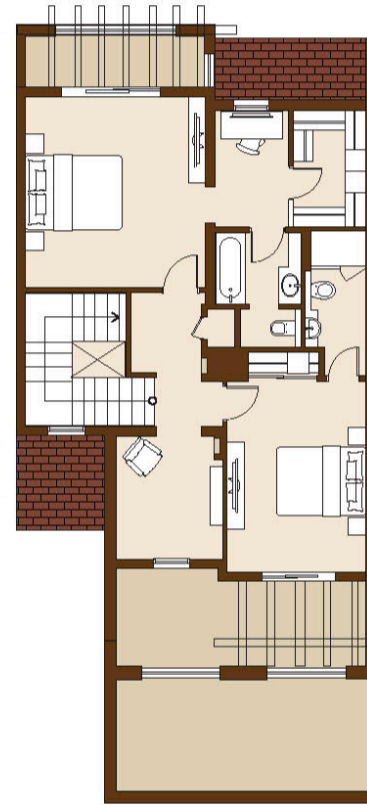
## 2 BEDROOM TOWNHOUSE

Villa Numbers 27, 39, 53, 67 & 81

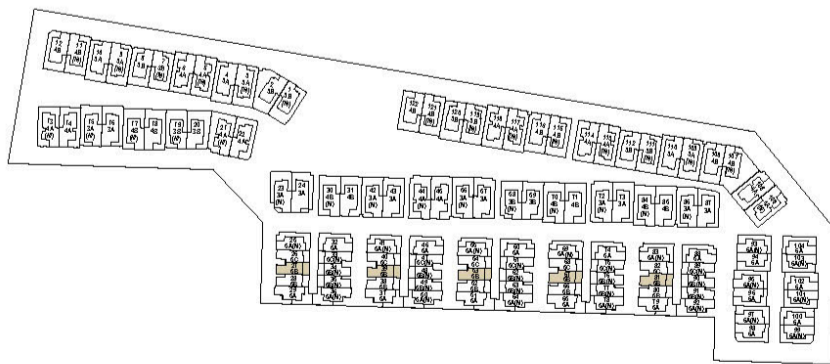
Type 5B



Ground Floor



First Floor

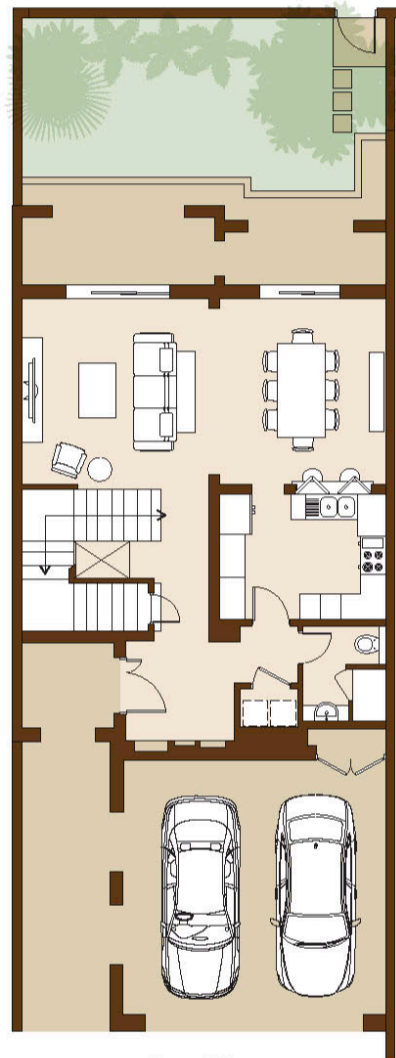


Built Up Area	262.08 m <sup>2</sup>	2,821.01 ft <sup>2</sup>
---------------	-----------------------	--------------------------

Drawings are provided by our consultants. All dimensions, features and amenities are approximate at time of printing. Actual size may vary from stated area. Drawings not to scale E & OE. The developer reserves the right to make revisions to the floor plans and any features, materials and dimensions mentioned without further notice.

# 5B

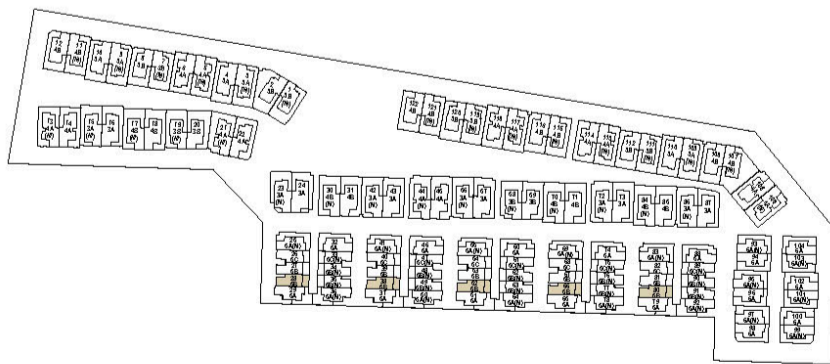
## 2 BEDROOM TOWNHOUSE Villa Numbers 28, 38, 52, 66 & 80 Type 5B



Ground Floor



First Floor

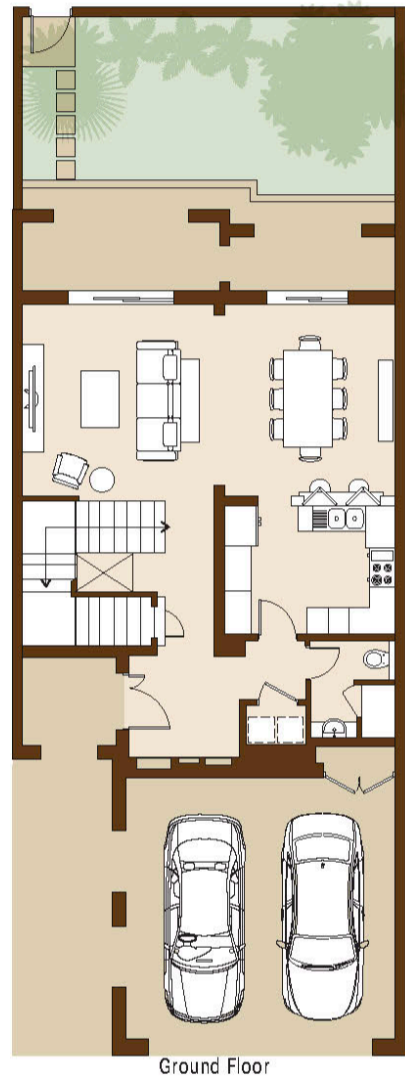


Built Up Area	260.33 m <sup>2</sup>	2,802.17 ft <sup>2</sup>
---------------	-----------------------	--------------------------

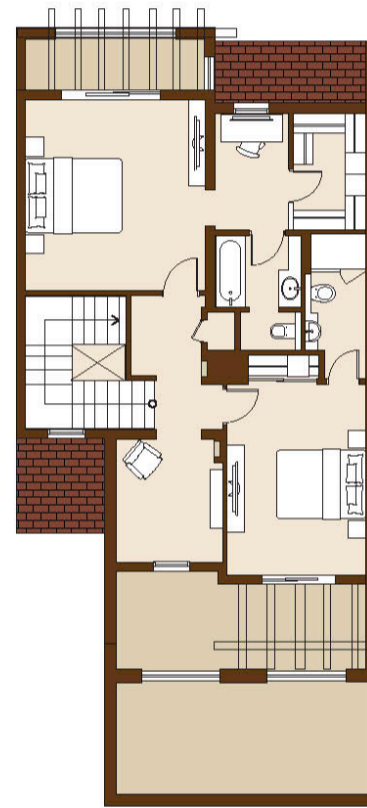
Drawings are provided by our consultants. All dimensions, features and amenities are approximate at time of printing. Actual size may vary from stated area. Drawings not to scale E & OE. The developer reserves the right to make revisions to the floor plans and any features, materials and dimensions mentioned without further notice.

# 5B

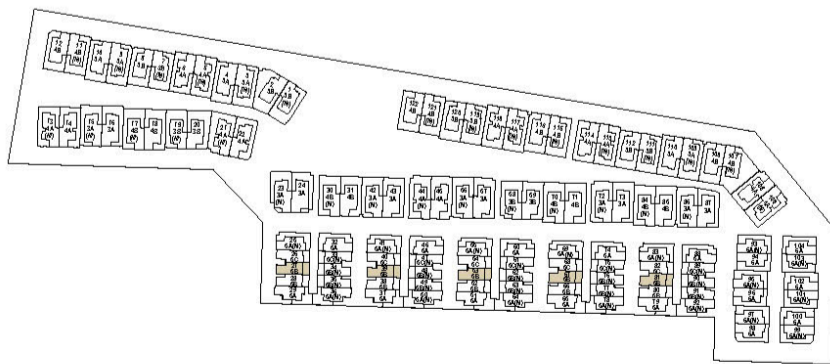
## 2 BEDROOM TOWNHOUSE Villa Numbers 27, 39, 53, 67 & 81 Type 5B



Ground Floor



First Floor

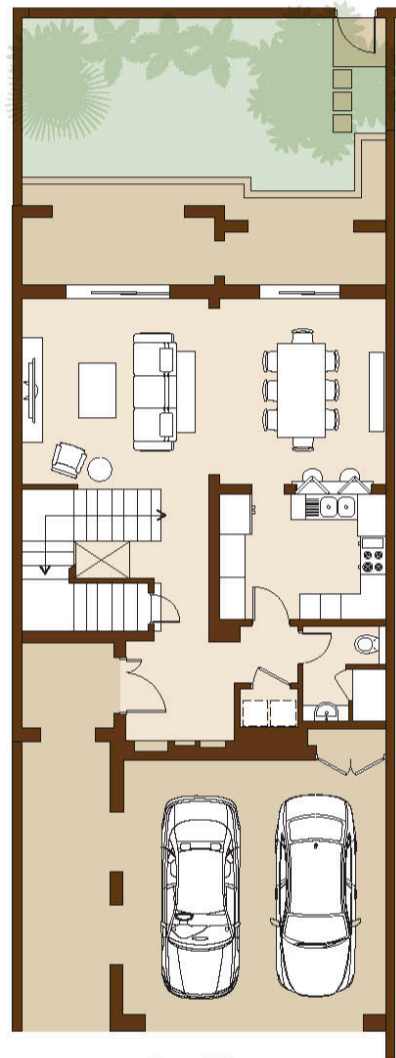


Built Up Area	262.08 m <sup>2</sup>	2,821.01 ft <sup>2</sup>
---------------	-----------------------	--------------------------

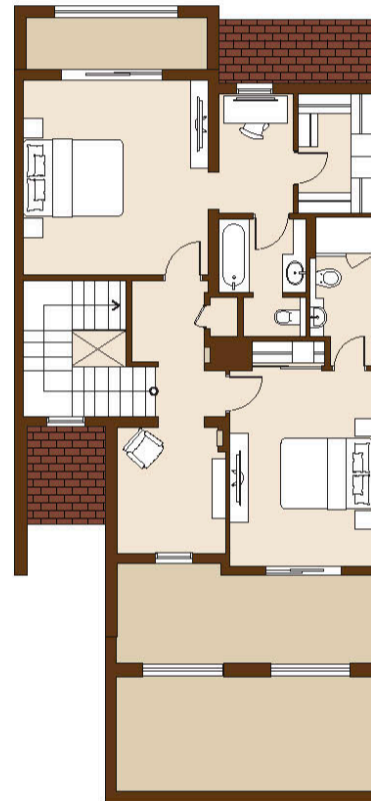
Drawings are provided by our consultants. All dimensions, features and amenities are approximate at time of printing. Actual size may vary from stated area. Drawings not to scale E & OE. The developer reserves the right to make revisions to the floor plans and any features, materials and dimensions mentioned without further notice.

# 5B

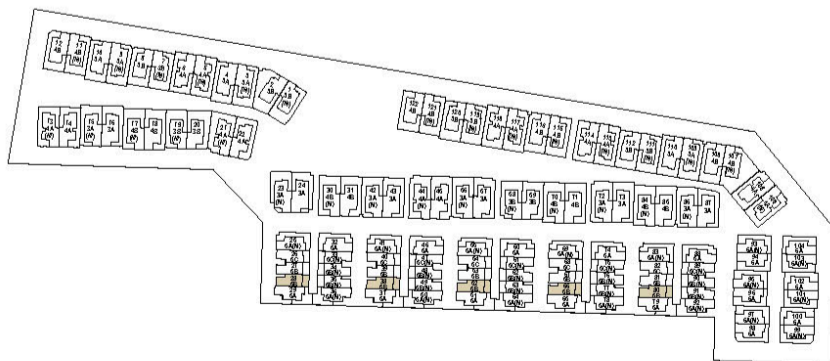
## 2 BEDROOM TOWNHOUSE Villa Numbers 28, 38, 52, 66 & 80 Type 5B



Ground Floor



First Floor

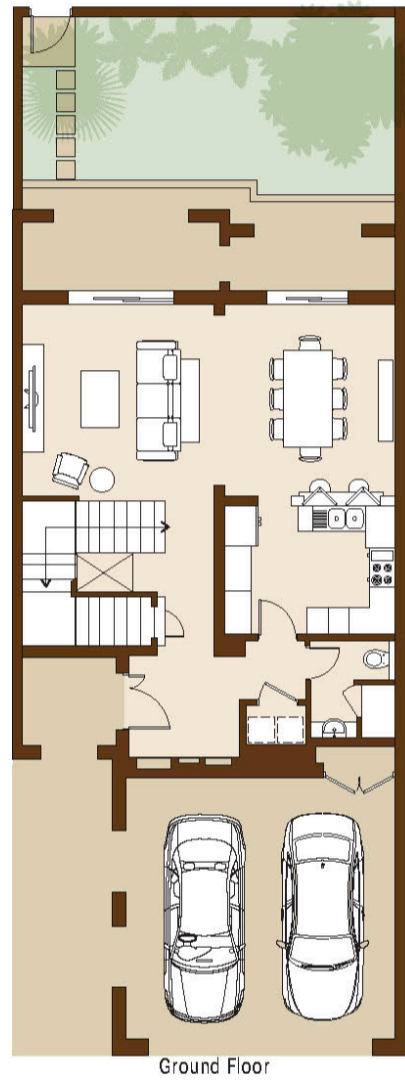


Built Up Area	260.33 m <sup>2</sup>	2,802.17 ft <sup>2</sup>
---------------	-----------------------	--------------------------

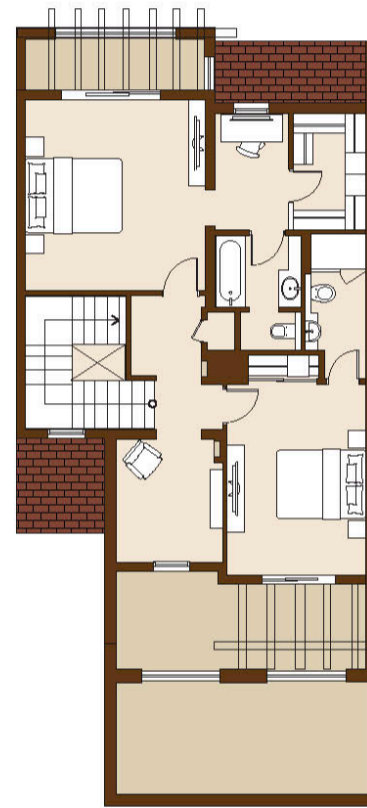
Drawings are provided by our consultants. All dimensions, features and amenities are approximate at time of printing. Actual size may vary from stated area. Drawings not to scale E & OE. The developer reserves the right to make revisions to the floor plans and any features, materials and dimensions mentioned without further notice.

# 5B

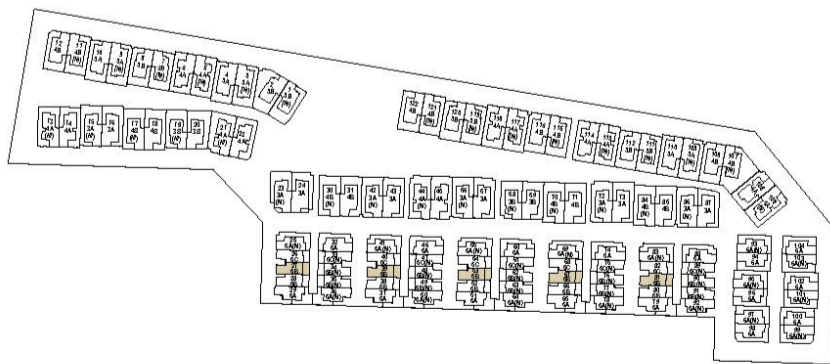
## 2 BEDROOM TOWNHOUSE Villa Numbers 27, 39, 53, 67 & 81 Type 5B



Ground Floor



First Floor



Built Up Area	262.08 m <sup>2</sup>	2,821.01 ft <sup>2</sup>
---------------	-----------------------	--------------------------

Drawings are provided by our consultants. All dimensions, features and amenities are approximate at time of printing. Actual size may vary from stated area. Drawings not to scale E & OE. The developer reserves the right to make revisions to the floor plans and any features, materials and dimensions mentioned without further notice.

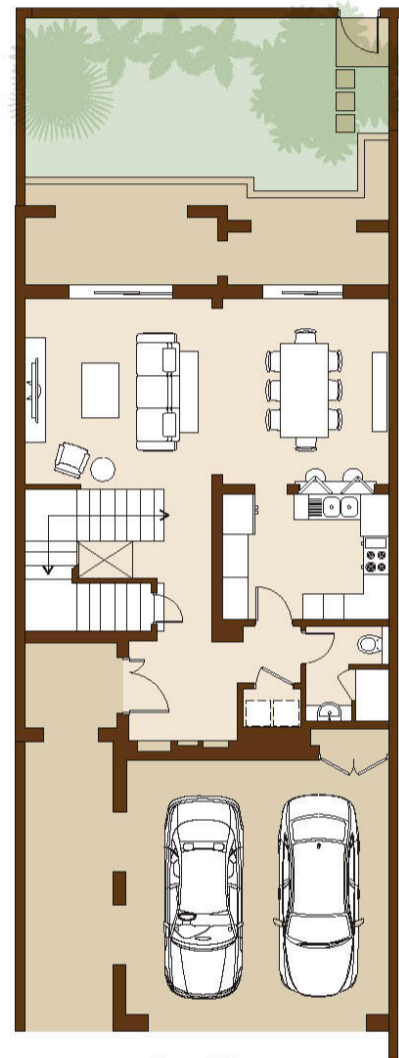


# 5B

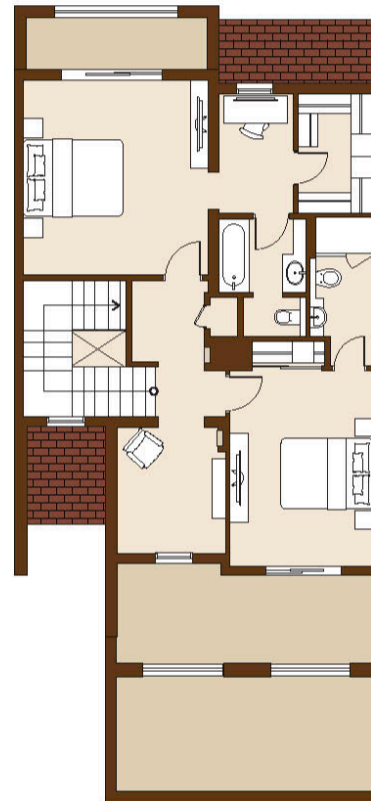
## 2 BEDROOM TOWNHOUSE

Villa Numbers 28, 38, 52, 66 & 80

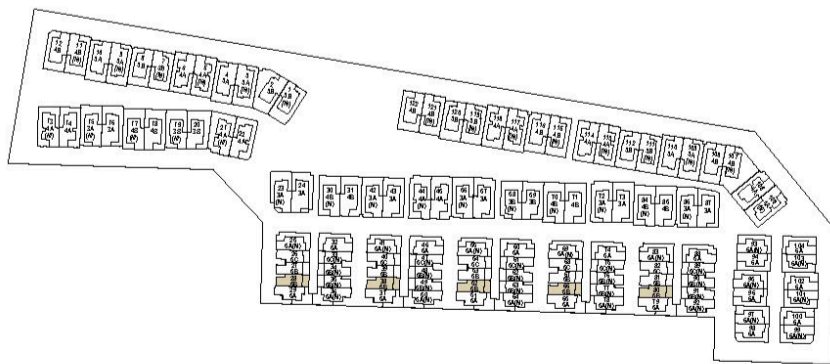
Type 5B



Ground Floor



First Floor

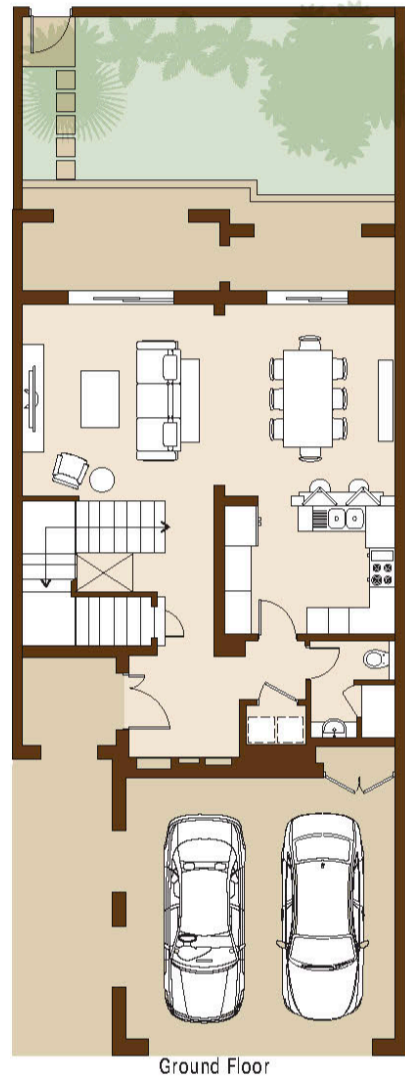


Built Up Area	260.33 m <sup>2</sup>	2,802.17 ft <sup>2</sup>
---------------	-----------------------	--------------------------

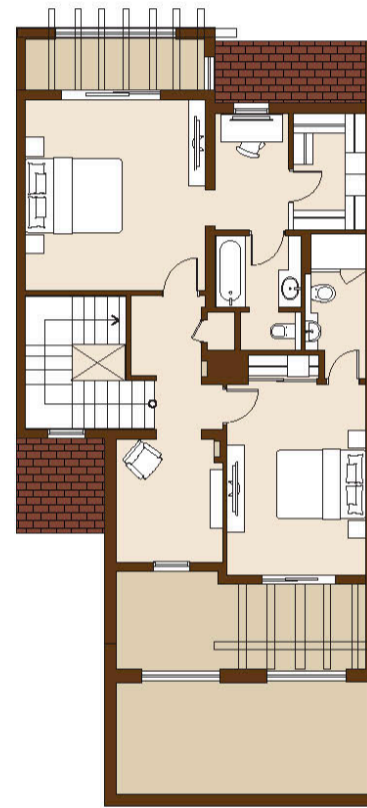
Drawings are provided by our consultants. All dimensions, features and amenities are approximate at time of printing. Actual size may vary from stated area. Drawings not to scale E & OE. The developer reserves the right to make revisions to the floor plans and any features, materials and dimensions mentioned without further notice.

# 5B

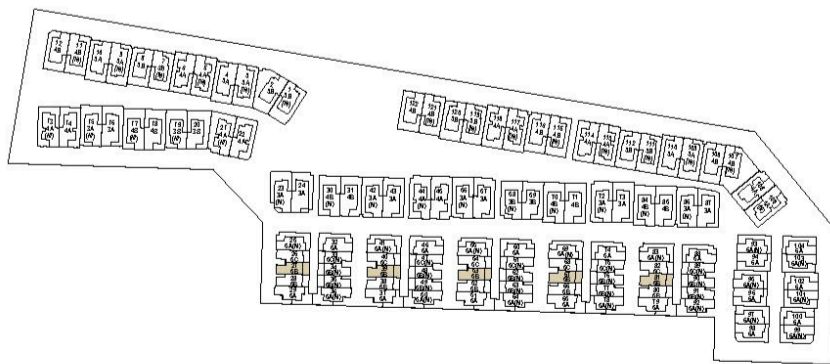
## 2 BEDROOM TOWNHOUSE Villa Numbers 27, 39, 53, 67 & 81 Type 5B



Ground Floor



First Floor

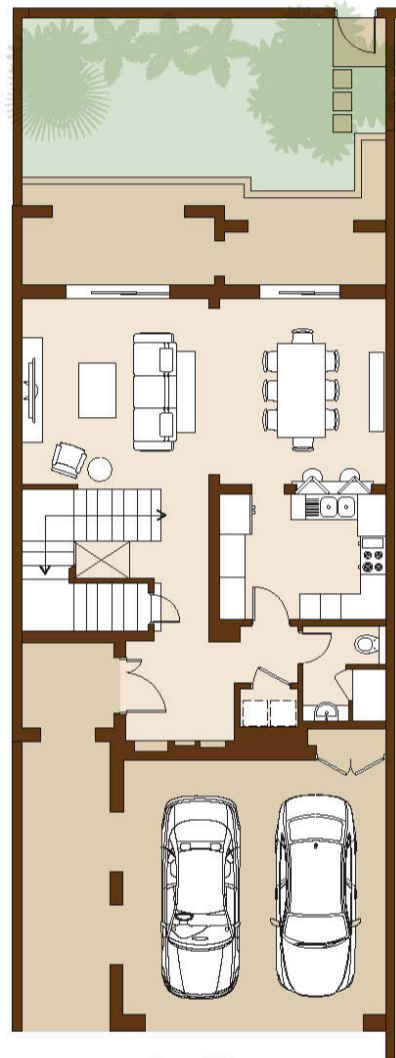


Built Up Area	262.08 m <sup>2</sup>	2,821.01 ft <sup>2</sup>
---------------	-----------------------	--------------------------

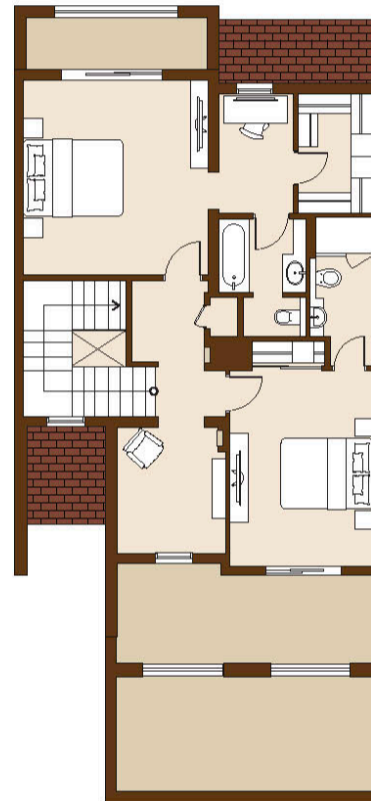
Drawings are provided by our consultants. All dimensions, features and amenities are approximate at time of printing. Actual size may vary from stated area. Drawings not to scale E & OE. The developer reserves the right to make revisions to the floor plans and any features, materials and dimensions mentioned without further notice.

# 5B

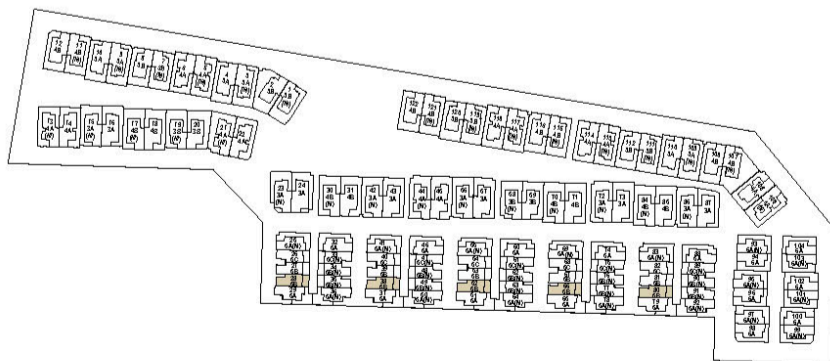
## 2 BEDROOM TOWNHOUSE Villa Numbers 28, 38, 52, 66 & 80 Type 5B



Ground Floor



First Floor

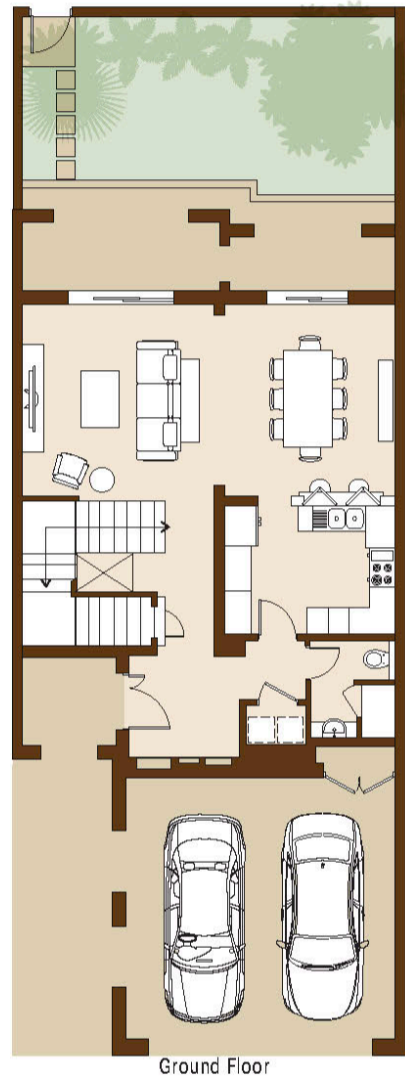


Built Up Area	260.33 m <sup>2</sup>	2,802.17 ft <sup>2</sup>
---------------	-----------------------	--------------------------

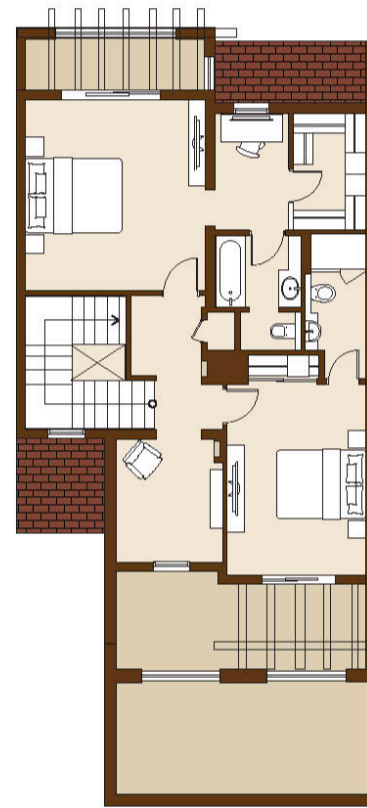
Drawings are provided by our consultants. All dimensions, features and amenities are approximate at time of printing. Actual size may vary from stated area. Drawings not to scale E & OE. The developer reserves the right to make revisions to the floor plans and any features, materials and dimensions mentioned without further notice.

# 5B

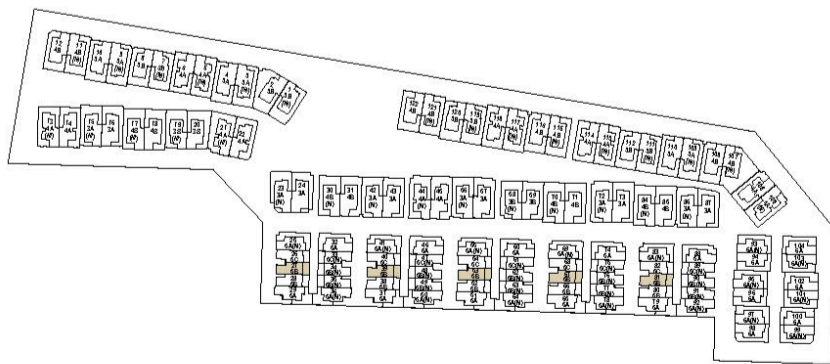
## 2 BEDROOM TOWNHOUSE Villa Numbers 27, 39, 53, 67 & 81 Type 5B



Ground Floor



First Floor

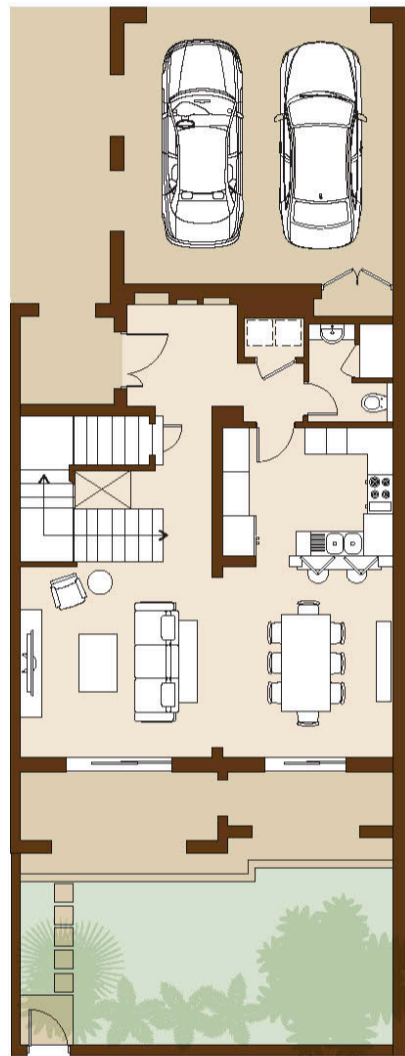


Built Up Area	262.08 m <sup>2</sup>	2,821.01 ft <sup>2</sup>
---------------	-----------------------	--------------------------

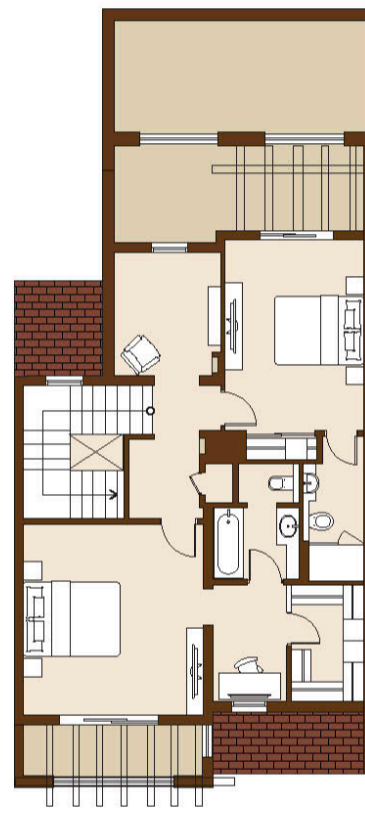
Drawings are provided by our consultants. All dimensions, features and amenities are approximate at time of printing. Actual size may vary from stated area. Drawings not to scale E & OE. The developer reserves the right to make revisions to the floor plans and any features, materials and dimensions mentioned without further notice.

# 5B(M)

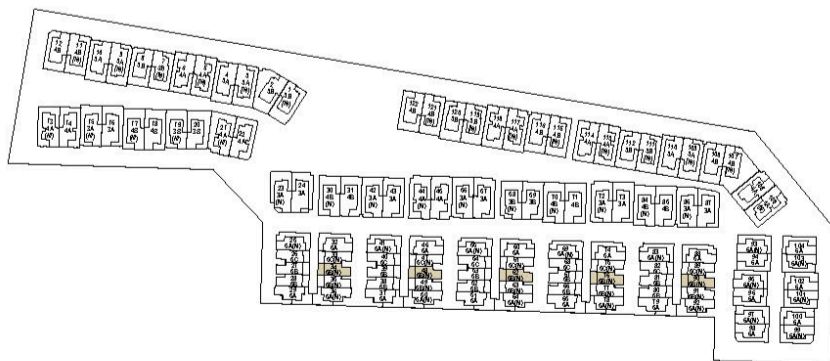
2 BEDROOM TOWNHOUSE  
Villa Numbers 34, 48, 62, 76 & 90  
Type 5B (M)



Ground Floor



First Floor

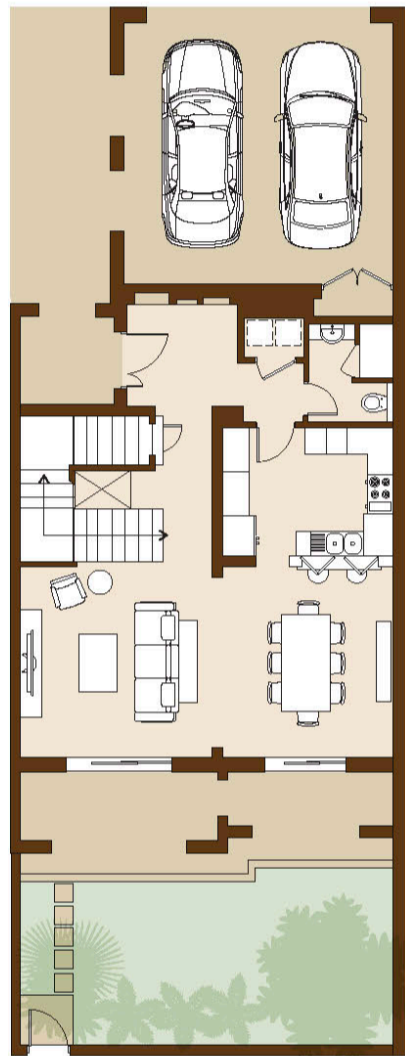


Built Up Area	262.08 m <sup>2</sup>	2,821.01 ft <sup>2</sup>
---------------	-----------------------	--------------------------

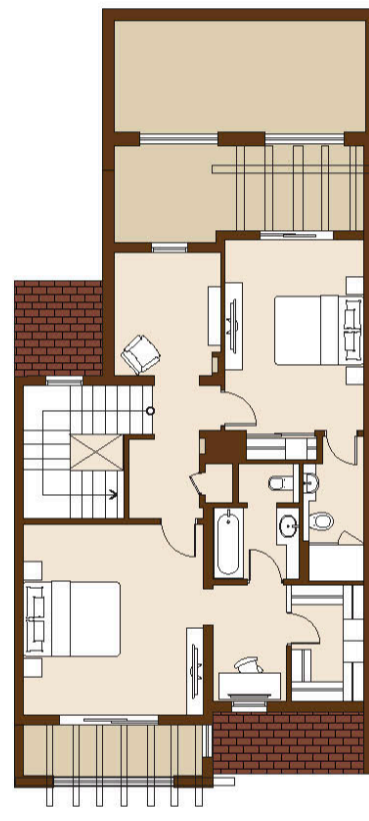
Drawings are provided by our consultants. All dimensions, features and amenities are approximate at time of printing. Actual size may vary from stated area. Drawings not to scale E & OE. The developer reserves the right to make revisions to the floor plans and any features, materials and dimensions mentioned without further notice.

# 5B(M)

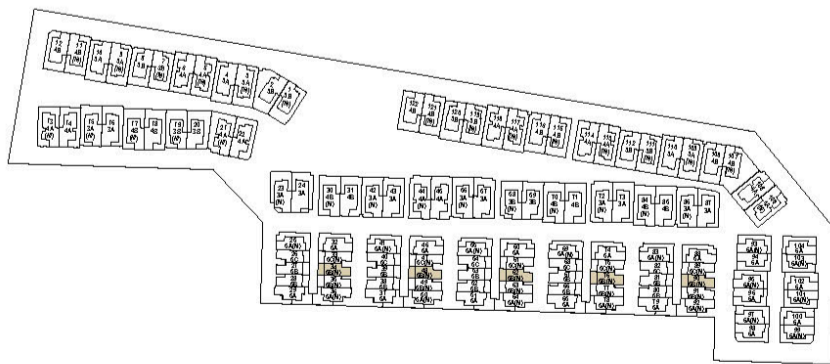
2 BEDROOM TOWNHOUSE  
Villa Numbers 34, 48, 62, 76 & 90  
Type 5B (M)



Ground Floor



First Floor

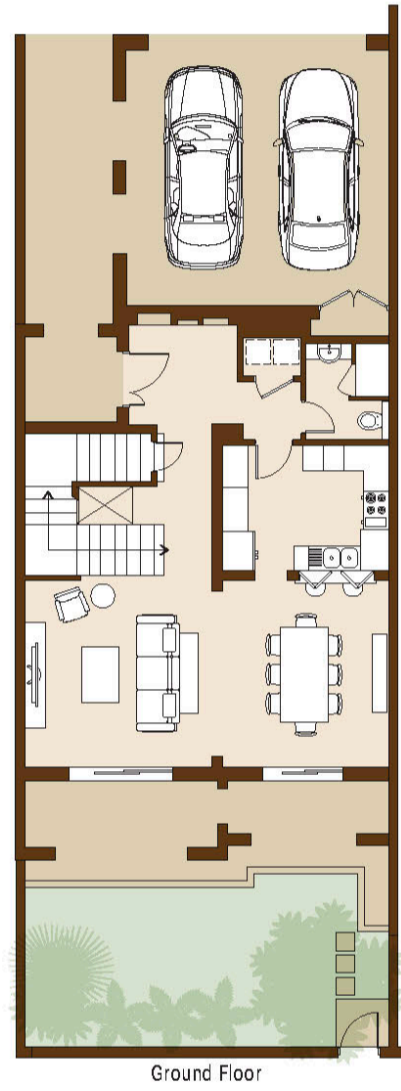


Built Up Area	262.08 m <sup>2</sup>	2,821.01 ft <sup>2</sup>
---------------	-----------------------	--------------------------

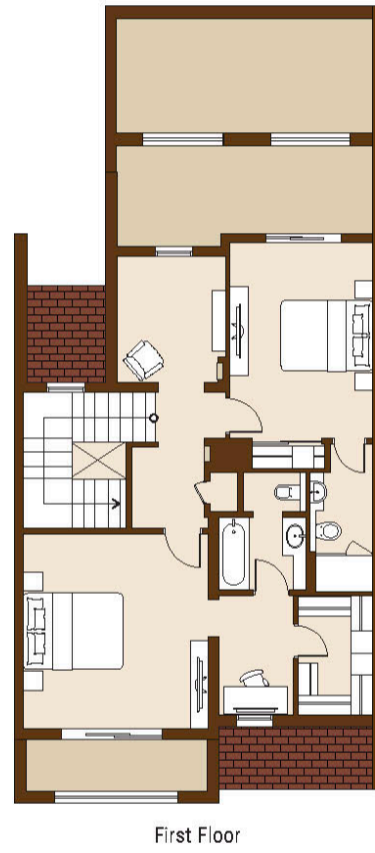
Drawings are provided by our consultants. All dimensions, features and amenities are approximate at time of printing. Actual size may vary from stated area. Drawings not to scale E & OE. The developer reserves the right to make revisions to the floor plans and any features, materials and dimensions mentioned without further notice.

# 5B(M)

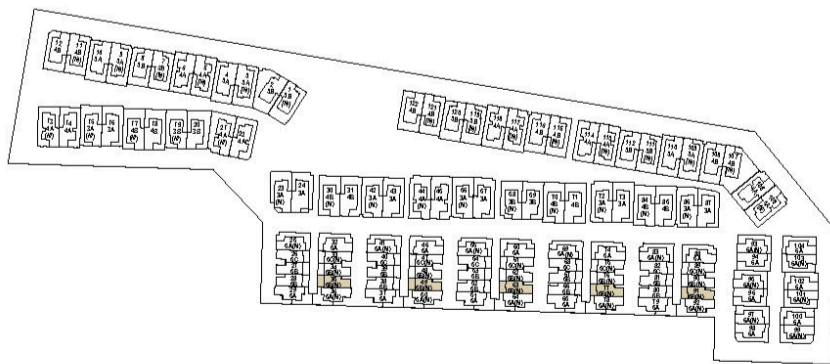
2 BEDROOM TOWNHOUSE  
Villa Numbers 35, 49, 63, 77 & 91  
Type 5B (M)



Ground Floor



First Floor

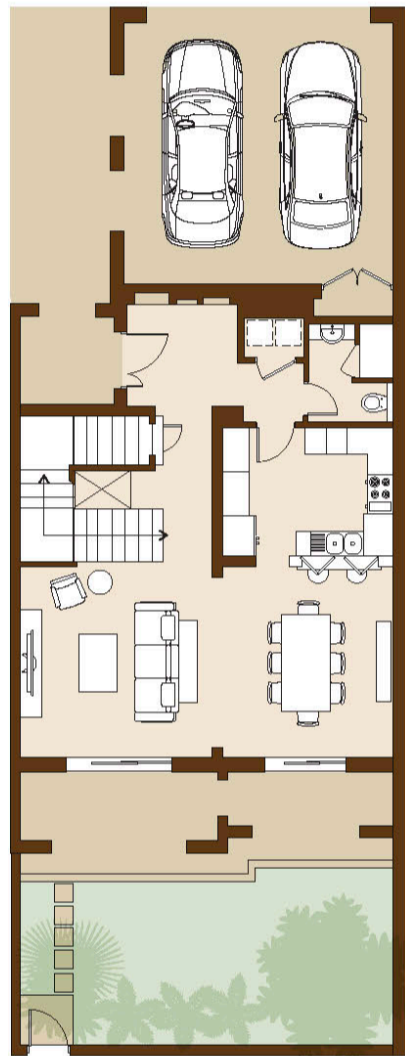


Built Up Area	260.33 m <sup>2</sup>	2,802.17 ft <sup>2</sup>
---------------	-----------------------	--------------------------

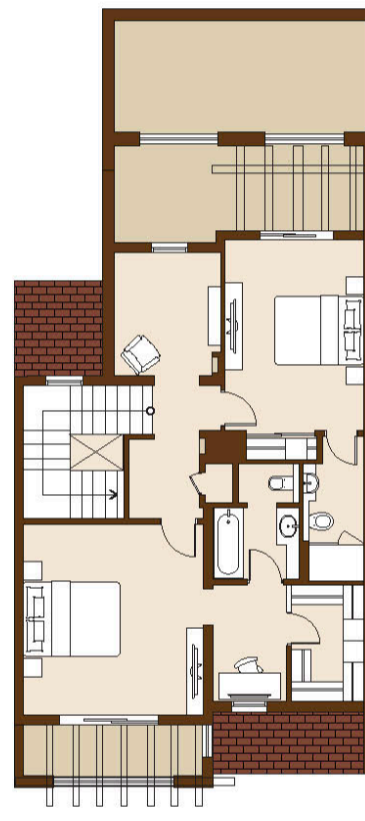
Drawings are provided by our consultants. All dimensions, features and amenities are approximate at time of printing. Actual size may vary from stated area. Drawings not to scale E & OE. The developer reserves the right to make revisions to the floor plans and any features, materials and dimensions mentioned without further notice.

# 5B(M)

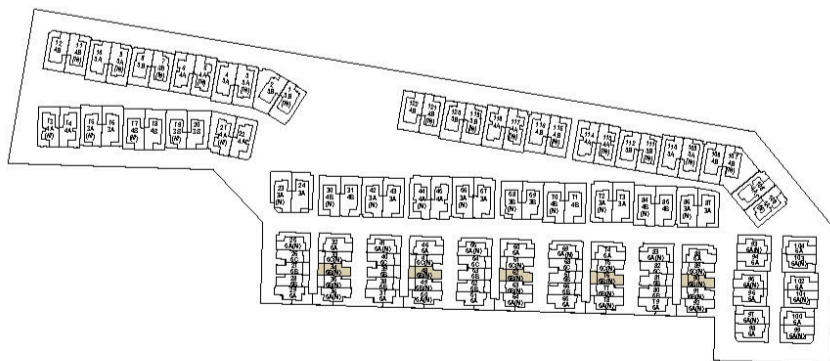
2 BEDROOM TOWNHOUSE  
Villa Numbers 34, 48, 62, 76 & 90  
Type 5B (M)



Ground Floor



First Floor



Built Up Area	262.08 m <sup>2</sup>	2,821.01 ft <sup>2</sup>
---------------	-----------------------	--------------------------

Drawings are provided by our consultants. All dimensions, features and amenities are approximate at time of printing. Actual size may vary from stated area. Drawings not to scale E & OE. The developer reserves the right to make revisions to the floor plans and any features, materials and dimensions mentioned without further notice.

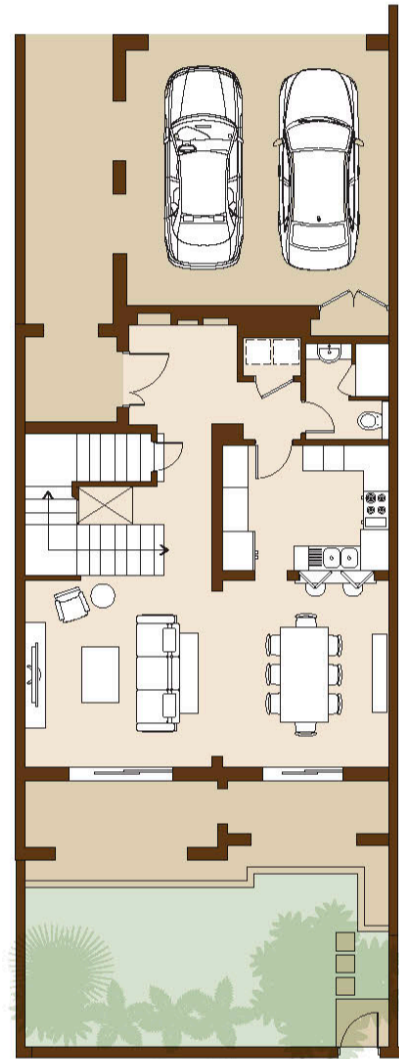


# 5B(M)

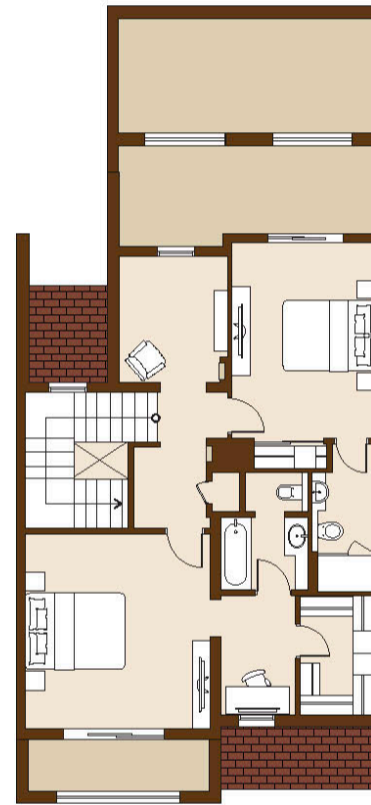
## 2 BEDROOM TOWNHOUSE

Villa Numbers 35, 49, 63, 77 & 91

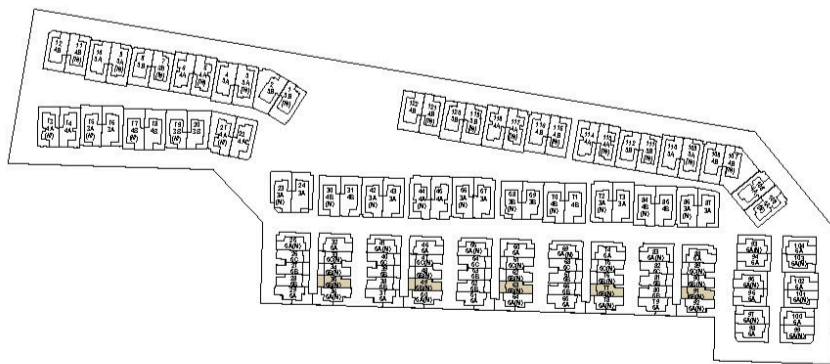
Type 5B (M)



Ground Floor



First Floor

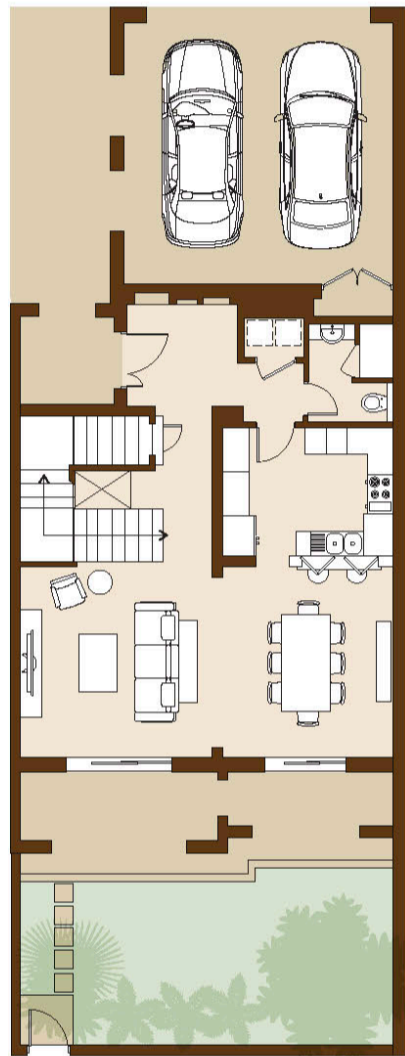


Built Up Area	260.33 m <sup>2</sup>	2,802.17 ft <sup>2</sup>
---------------	-----------------------	--------------------------

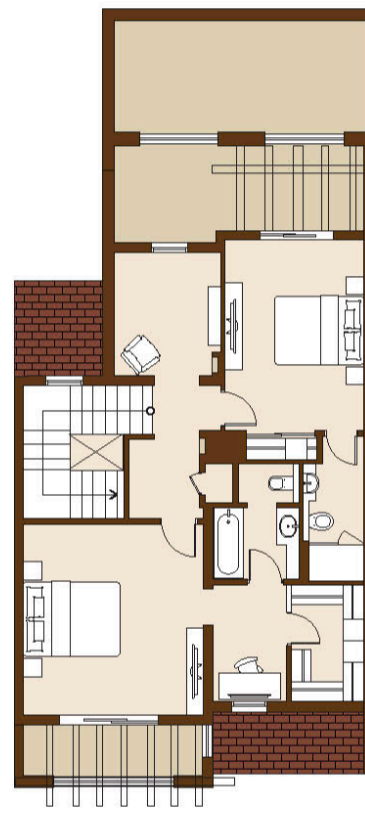
Drawings are provided by our consultants. All dimensions, features and amenities are approximate at time of printing. Actual size may vary from stated area. Drawings not to scale E & OE. The developer reserves the right to make revisions to the floor plans and any features, materials and dimensions mentioned without further notice.

# 5B(M)

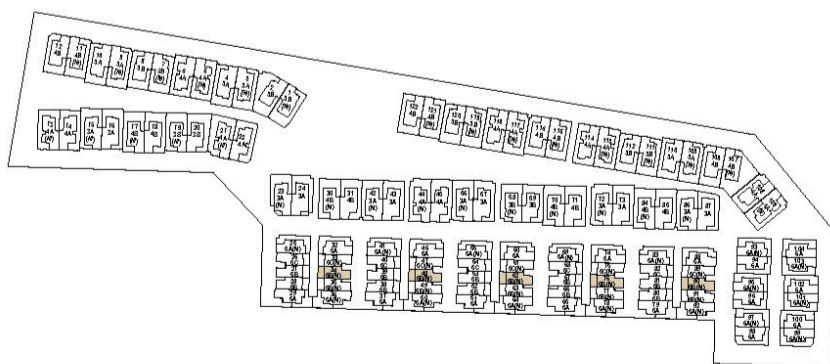
2 BEDROOM TOWNHOUSE  
Villa Numbers 34, 48, 62, 76 & 90  
Type 5B (M)



Ground Floor



First Floor



Built Up Area	262.08 m <sup>2</sup>	2,821.01 ft <sup>2</sup>
---------------	-----------------------	--------------------------

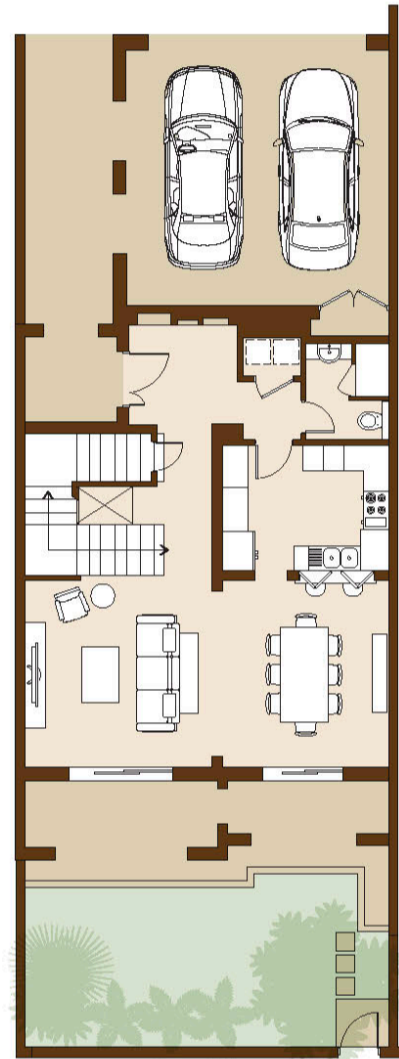
Drawings are provided by our consultants. All dimensions, features and amenities are approximate at time of printing. Actual size may vary from stated area. Drawings not to scale E & OE. The developer reserves the right to make revisions to the floor plans and any features, materials and dimensions mentioned without further notice.

# 5B(M)

## 2 BEDROOM TOWNHOUSE

Villa Numbers 35, 49, 63, 77 & 91

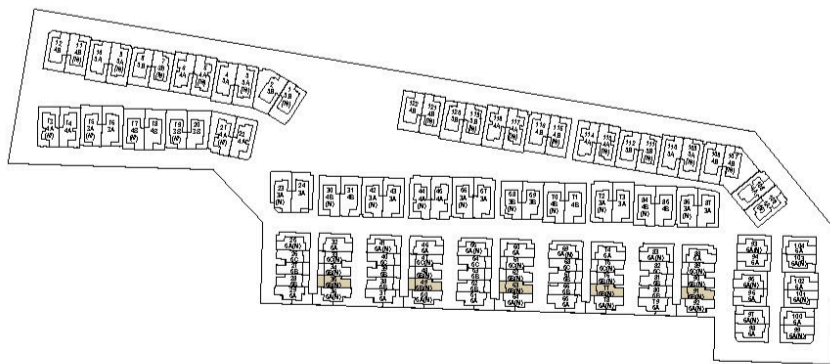
Type 5B (M)



Ground Floor



First Floor

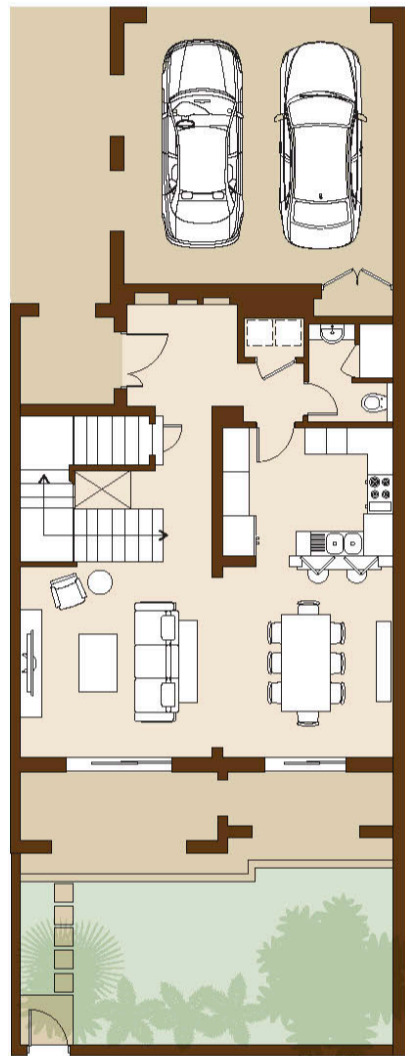


Built Up Area	260.33 m <sup>2</sup>	2,802.17 ft <sup>2</sup>
---------------	-----------------------	--------------------------

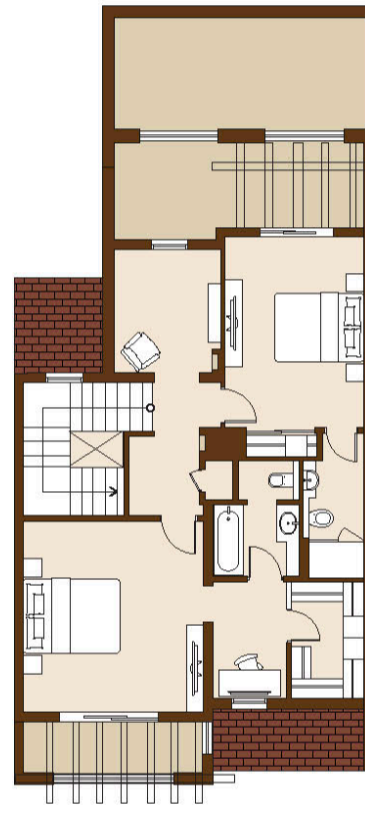
Drawings are provided by our consultants. All dimensions, features and amenities are approximate at time of printing. Actual size may vary from stated area. Drawings not to scale E & OE. The developer reserves the right to make revisions to the floor plans and any features, materials and dimensions mentioned without further notice.

# 5B(M)

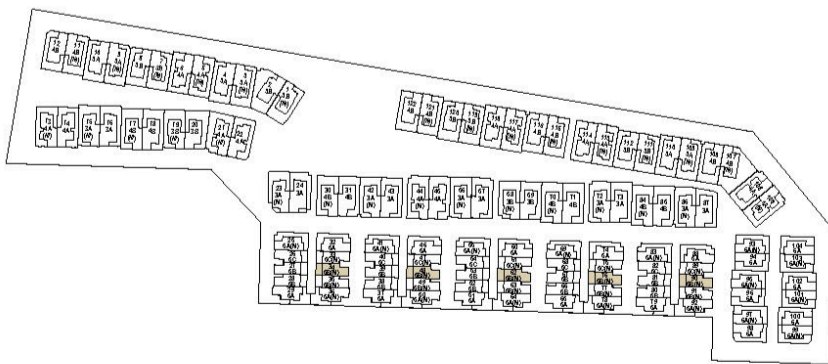
2 BEDROOM TOWNHOUSE  
Villa Numbers 34, 48, 62, 76 & 90  
Type 5B (M)



Ground Floor



First Floor



Built Up Area	262.08 m <sup>2</sup>	2,821.01 ft <sup>2</sup>
---------------	-----------------------	--------------------------

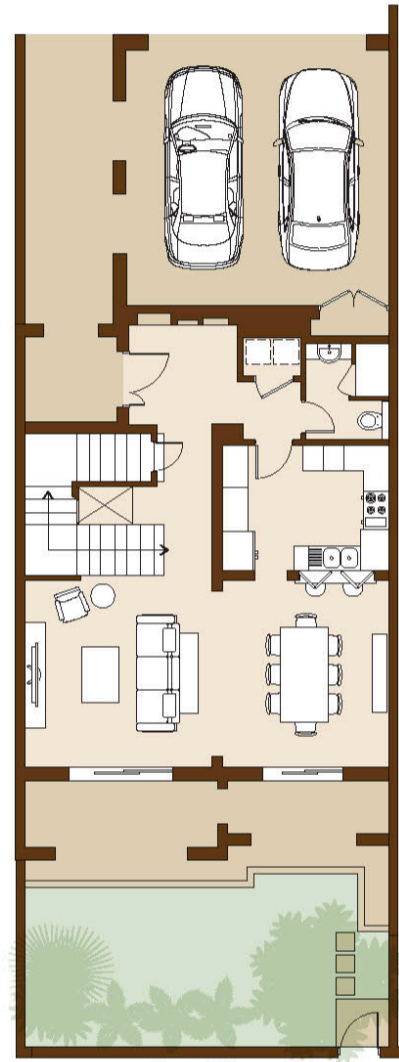
Drawings are provided by our consultants. All dimensions, features and amenities are approximate at time of printing. Actual size may vary from stated area. Drawings not to scale E & OE. The developer reserves the right to make revisions to the floor plans and any features, materials and dimensions mentioned without further notice.

# 5B(M)

## 2 BEDROOM TOWNHOUSE

Villa Numbers 35, 49, 63, 77 & 91

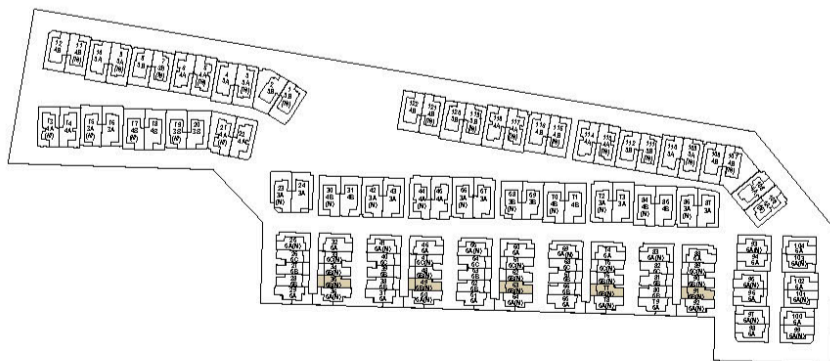
Type 5B (M)



Ground Floor



First Floor



Built Up Area	260.33 m <sup>2</sup>	2,802.17 ft <sup>2</sup>
---------------	-----------------------	--------------------------

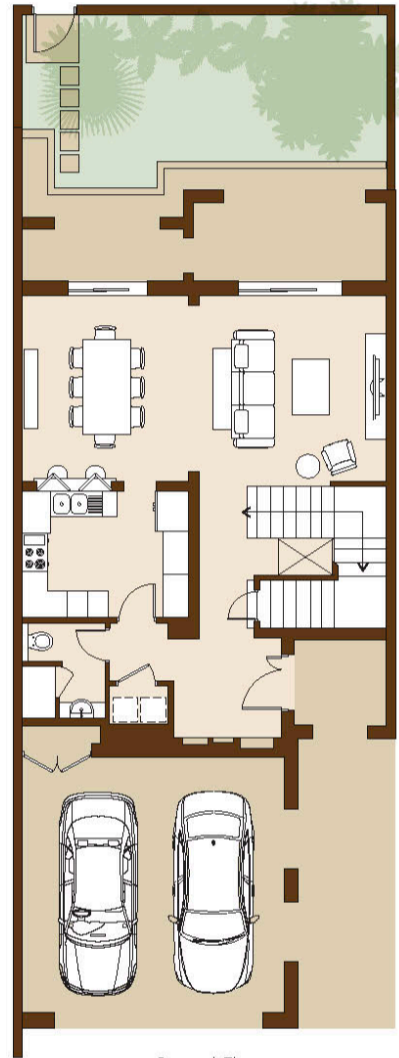
Drawings are provided by our consultants. All dimensions, features and amenities are approximate at time of printing. Actual size may vary from stated area. Drawings not to scale E & OE. The developer reserves the right to make revisions to the floor plans and any features, materials and dimensions mentioned without further notice.

# 5C

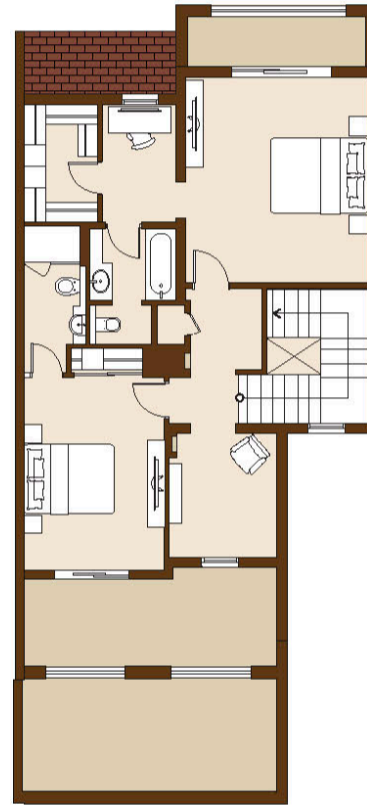
## 2 BEDROOM TOWNHOUSE

Villa Numbers 26, 40, 54, 68 & 82

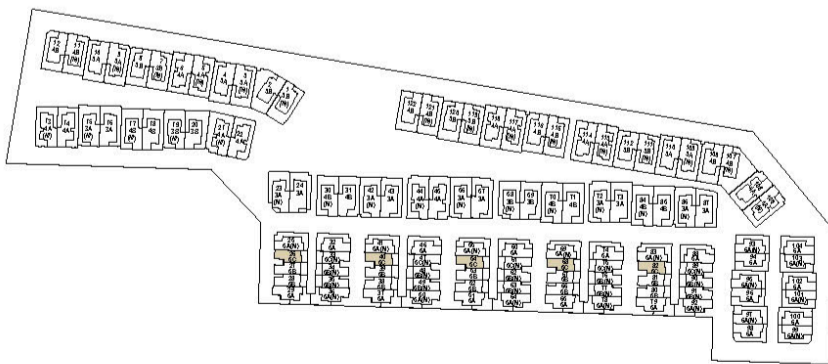
Type 5C



Ground Floor



First Floor



Built Up Area	262.76 m <sup>2</sup>	2,828.33 ft <sup>2</sup>
---------------	-----------------------	--------------------------

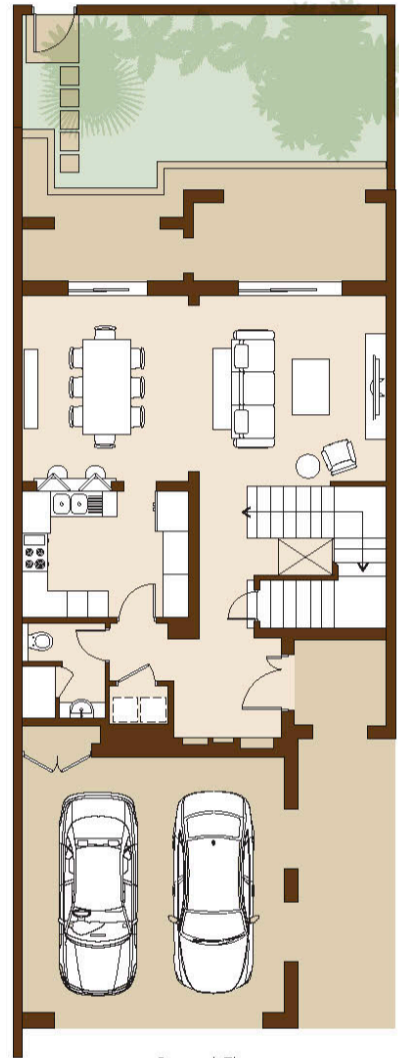
Drawings are provided by our consultants. All dimensions, features and amenities are approximate at time of printing. Actual size may vary from stated area. Drawings not to scale E & OE. The developer reserves the right to make revisions to the floor plans and any features, materials and dimensions mentioned without further notice.

# 5C

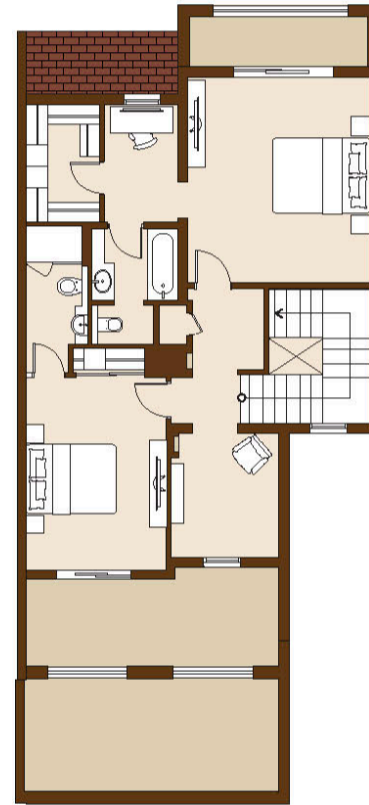
## 2 BEDROOM TOWNHOUSE

Villa Numbers 26, 40, 54, 68 & 82

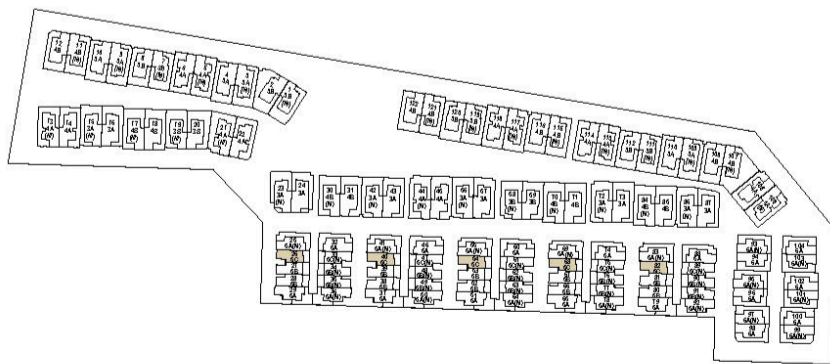
Type 5C



Ground Floor



First Floor



Built Up Area	262.76 m <sup>2</sup>	2,828.33 ft <sup>2</sup>
---------------	-----------------------	--------------------------

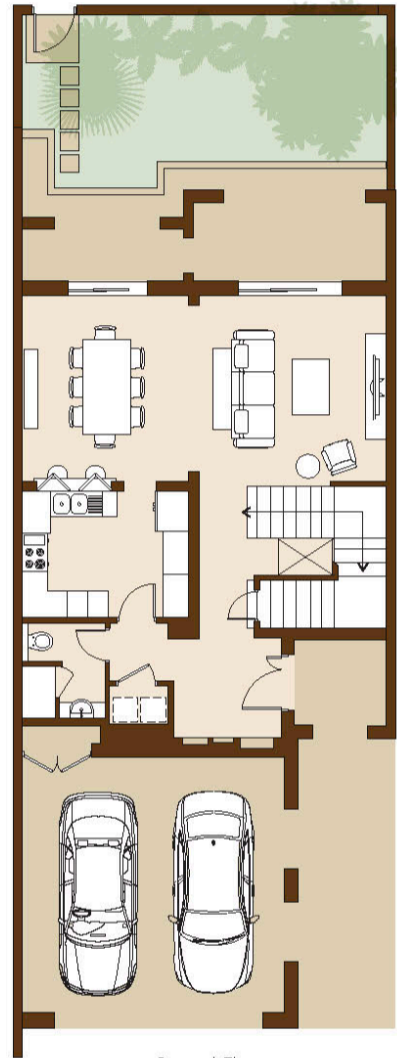
Drawings are provided by our consultants. All dimensions, features and amenities are approximate at time of printing. Actual size may vary from stated area. Drawings not to scale E & OE. The developer reserves the right to make revisions to the floor plans and any features, materials and dimensions mentioned without further notice.

# 5C

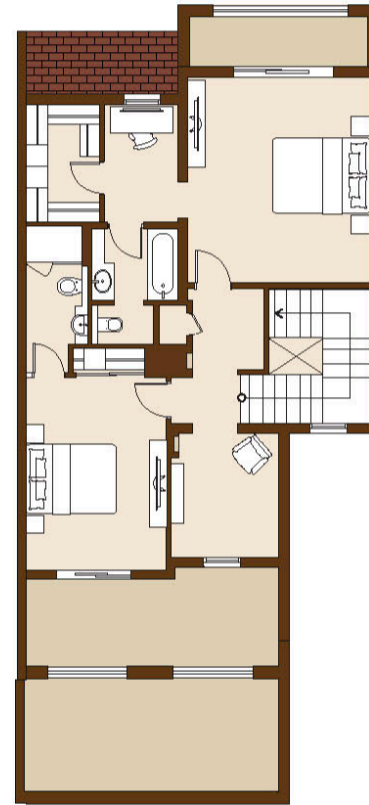
## 2 BEDROOM TOWNHOUSE

Villa Numbers 26, 40, 54, 68 & 82

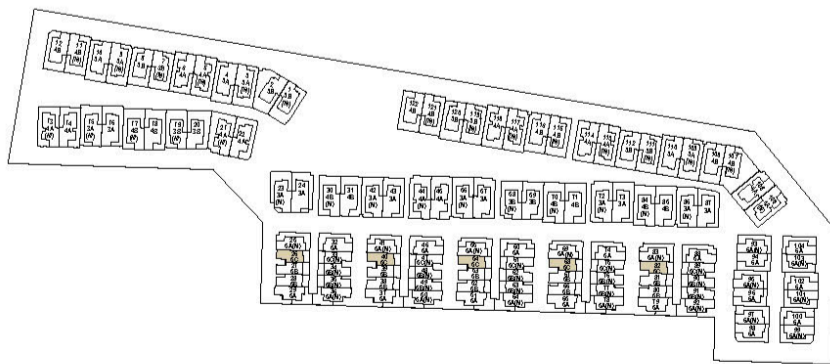
Type 5C



Ground Floor



First Floor



Built Up Area	262.76 m <sup>2</sup>	2,828.33 ft <sup>2</sup>
---------------	-----------------------	--------------------------

Drawings are provided by our consultants. All dimensions, features and amenities are approximate at time of printing. Actual size may vary from stated area. Drawings not to scale E & OE. The developer reserves the right to make revisions to the floor plans and any features, materials and dimensions mentioned without further notice.

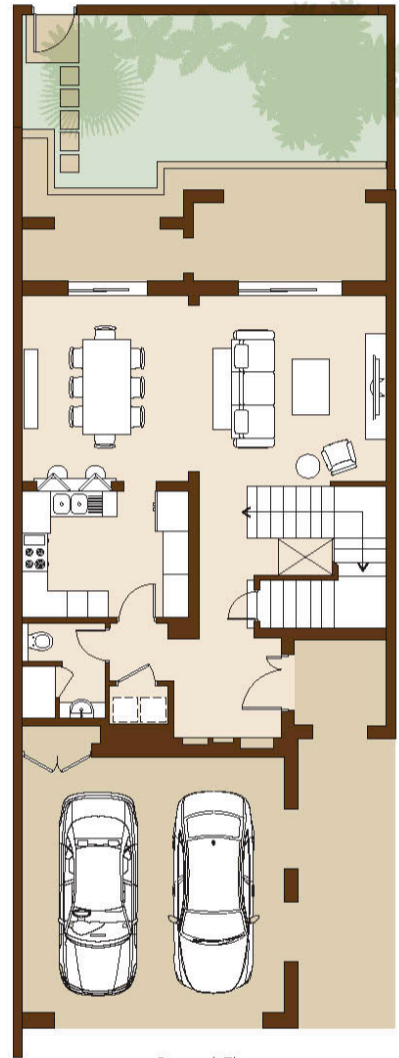


# 5C

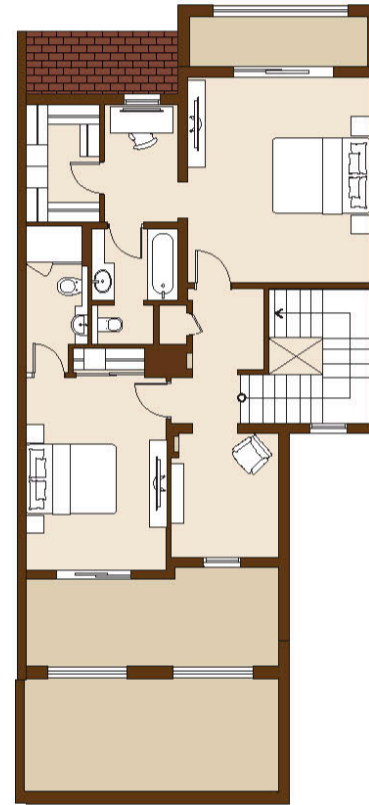
## 2 BEDROOM TOWNHOUSE

Villa Numbers 26, 40, 54, 68 & 82

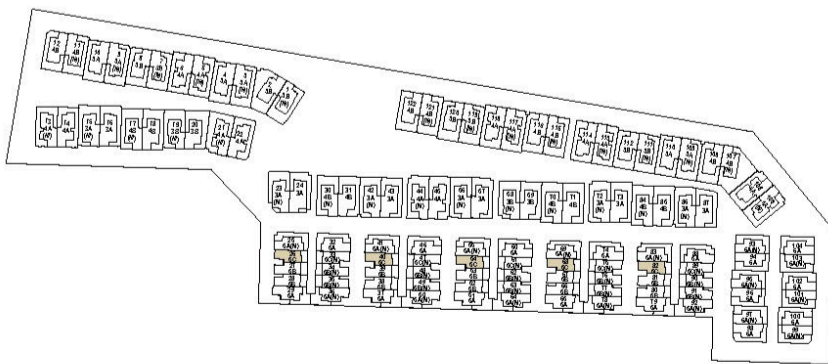
Type 5C



Ground Floor



First Floor



Built Up Area	262.76 m <sup>2</sup>	2,828.33 ft <sup>2</sup>
---------------	-----------------------	--------------------------

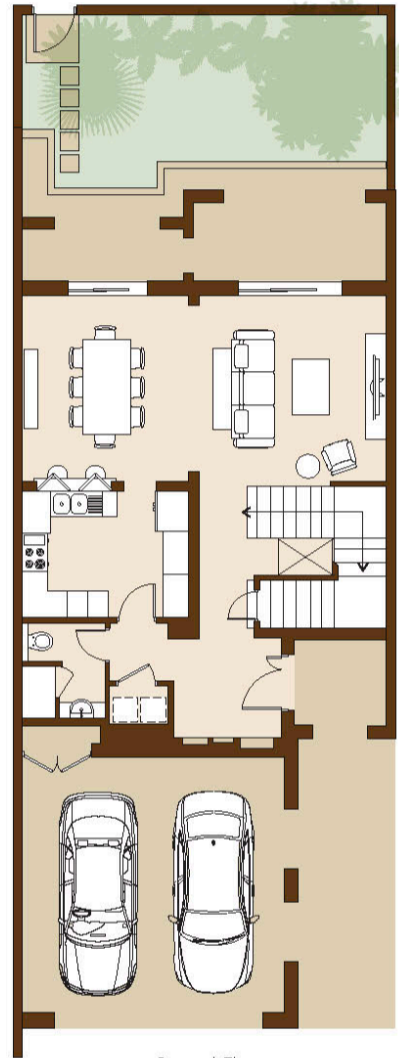
Drawings are provided by our consultants. All dimensions, features and amenities are approximate at time of printing. Actual size may vary from stated area. Drawings not to scale E & OE. The developer reserves the right to make revisions to the floor plans and any features, materials and dimensions mentioned without further notice.

# 5C

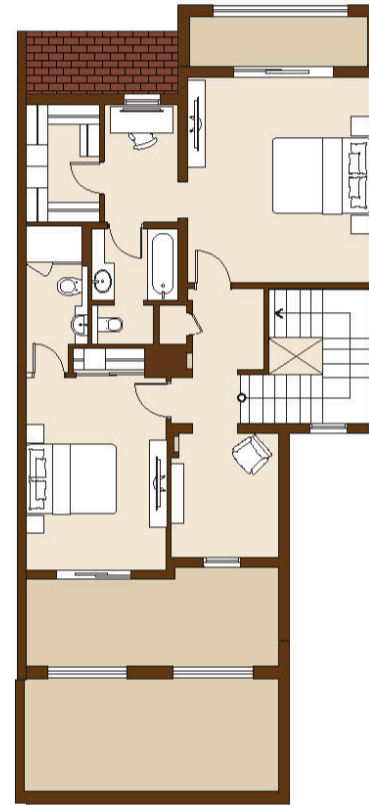
## 2 BEDROOM TOWNHOUSE

Villa Numbers 26, 40, 54, 68 & 82

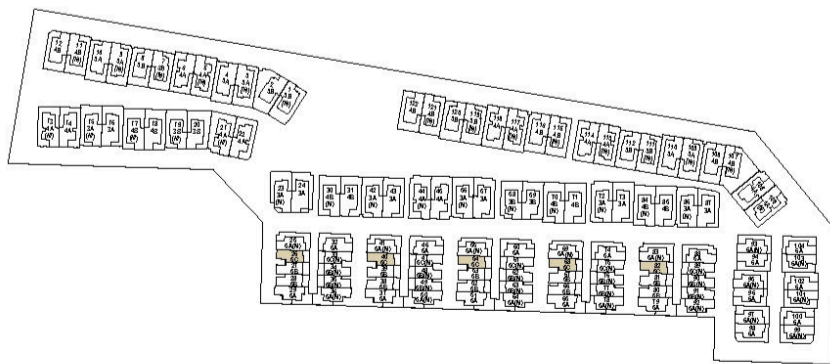
Type 5C



Ground Floor



First Floor



Built Up Area	262.76 m <sup>2</sup>	2,828.33 ft <sup>2</sup>
---------------	-----------------------	--------------------------

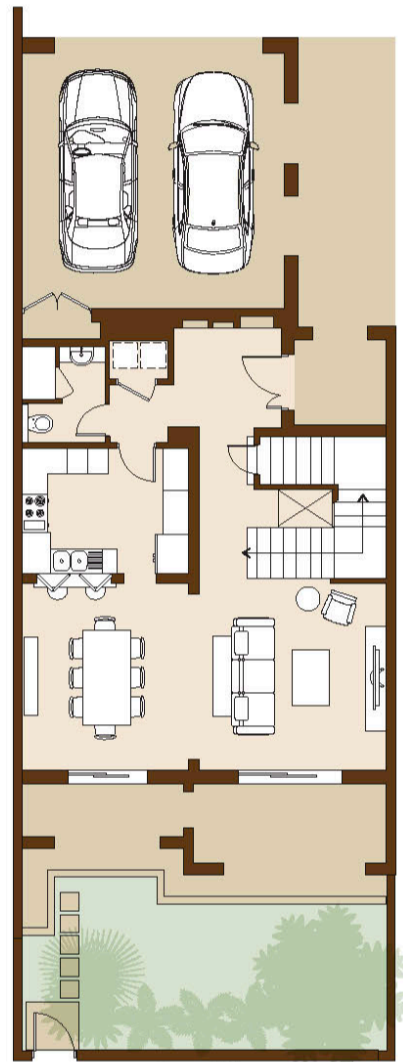
Drawings are provided by our consultants. All dimensions, features and amenities are approximate at time of printing. Actual size may vary from stated area. Drawings not to scale E & OE. The developer reserves the right to make revisions to the floor plans and any features, materials and dimensions mentioned without further notice.

# 5C(M)

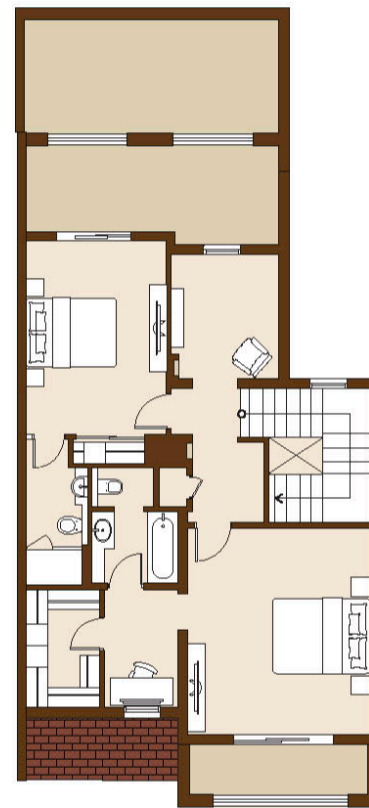
## 2 BEDROOM TOWNHOUSE

Villa Numbers 33, 47, 61, 75 & 89

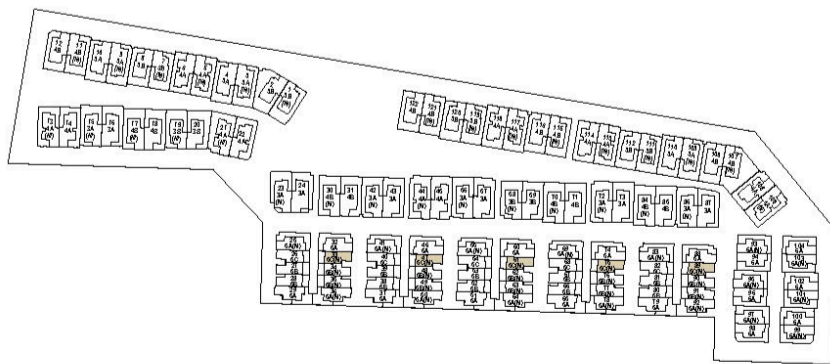
Type 5C (M)



Ground Floor



First Floor



Built Up Area	262.76 m <sup>2</sup>	2,828.33 ft <sup>2</sup>
---------------	-----------------------	--------------------------

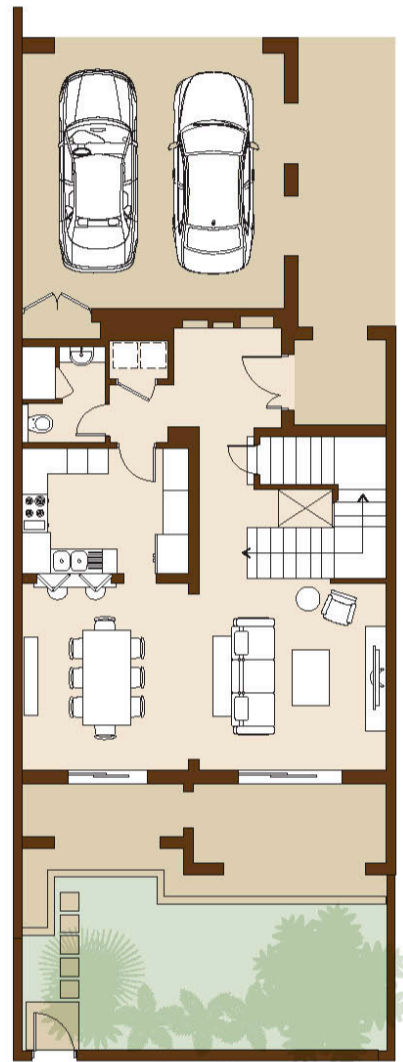
Drawings are provided by our consultants. All dimensions, features and amenities are approximate at time of printing. Actual size may vary from stated area. Drawings not to scale E & OE. The developer reserves the right to make revisions to the floor plans and any features, materials and dimensions mentioned without further notice.

# 5C(M)

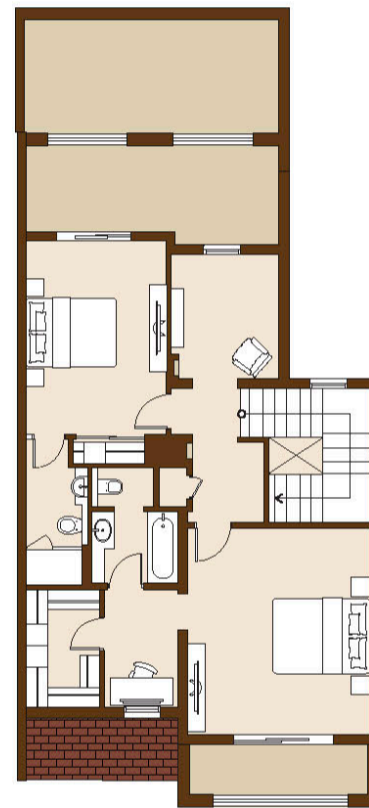
## 2 BEDROOM TOWNHOUSE

Villa Numbers 33, 47, 61, 75 & 89

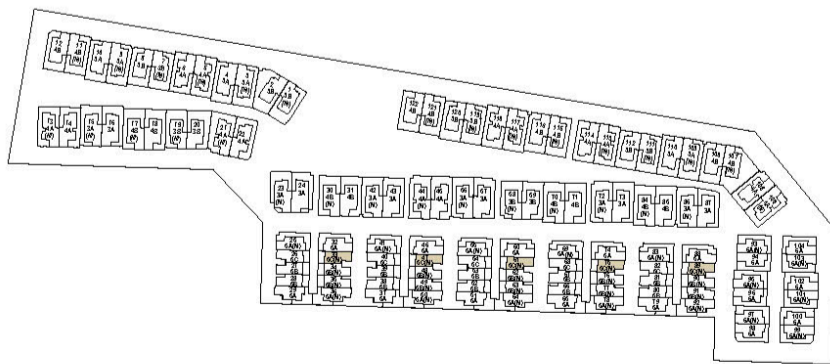
Type 5C (M)



Ground Floor



First Floor



Built Up Area	262.76 m <sup>2</sup>	2,828.33 ft <sup>2</sup>
---------------	-----------------------	--------------------------

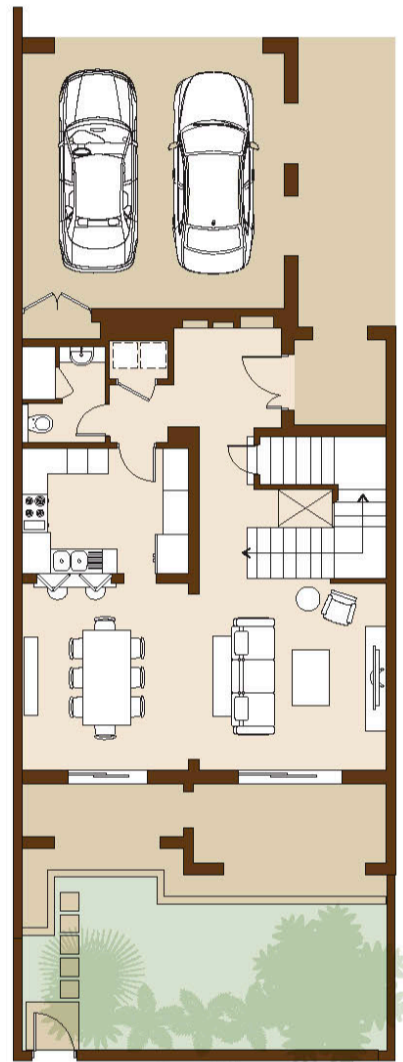
Drawings are provided by our consultants. All dimensions, features and amenities are approximate at time of printing. Actual size may vary from stated area. Drawings not to scale E & OE. The developer reserves the right to make revisions to the floor plans and any features, materials and dimensions mentioned without further notice.

# 5C(M)

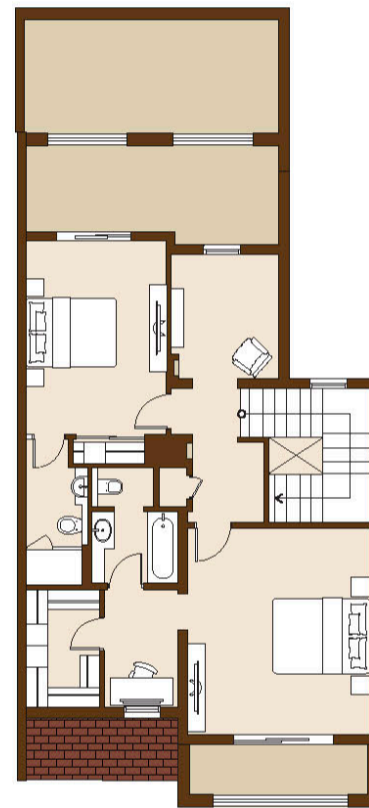
## 2 BEDROOM TOWNHOUSE

Villa Numbers 33, 47, 61, 75 & 89

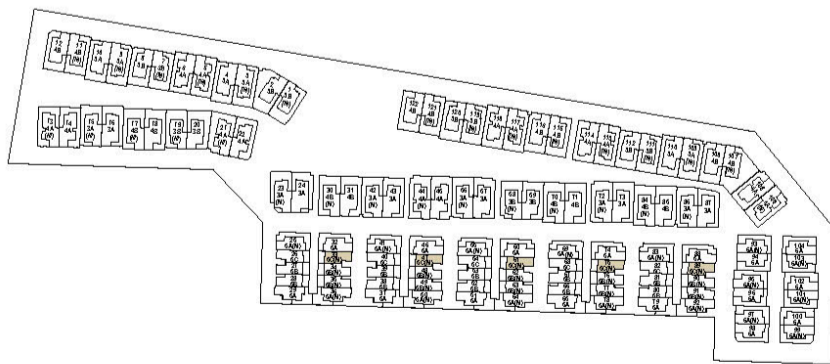
Type 5C (M)



Ground Floor



First Floor



Built Up Area	262.76 m <sup>2</sup>	2,828.33 ft <sup>2</sup>
---------------	-----------------------	--------------------------

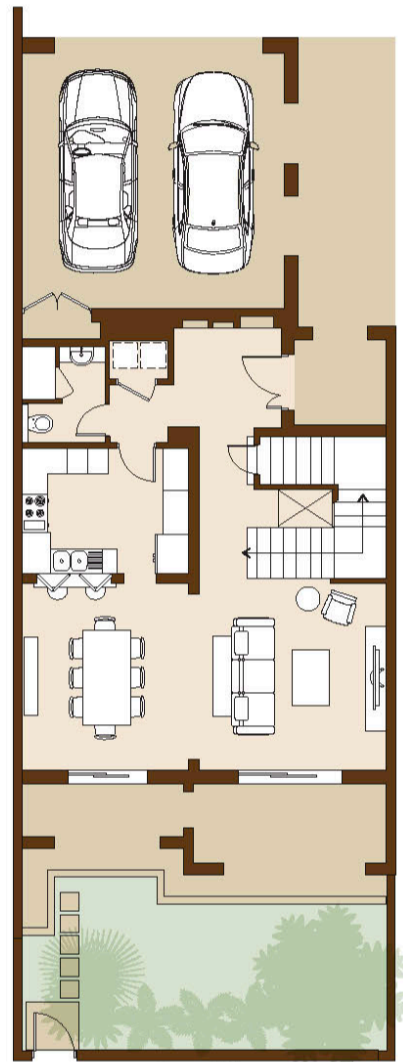
Drawings are provided by our consultants. All dimensions, features and amenities are approximate at time of printing. Actual size may vary from stated area. Drawings not to scale E & OE. The developer reserves the right to make revisions to the floor plans and any features, materials and dimensions mentioned without further notice.

# 5C(M)

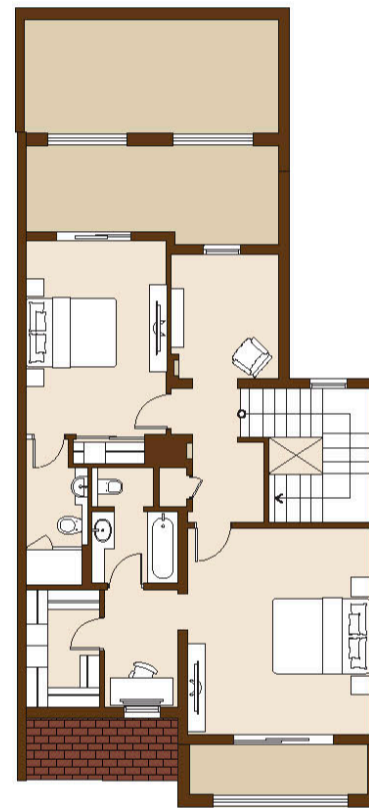
## 2 BEDROOM TOWNHOUSE

Villa Numbers 33, 47, 61, 75 & 89

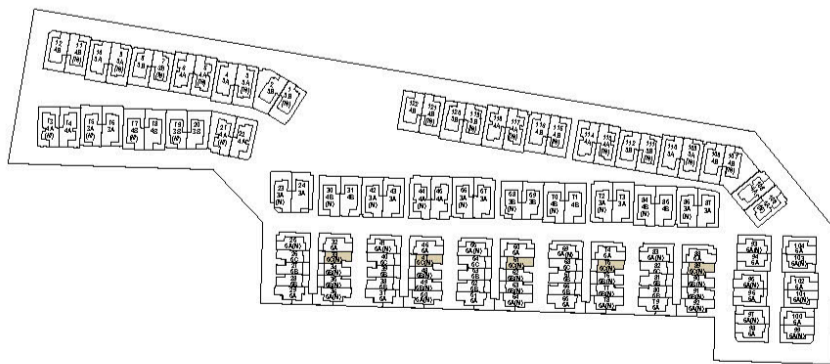
Type 5C (M)



Ground Floor



First Floor

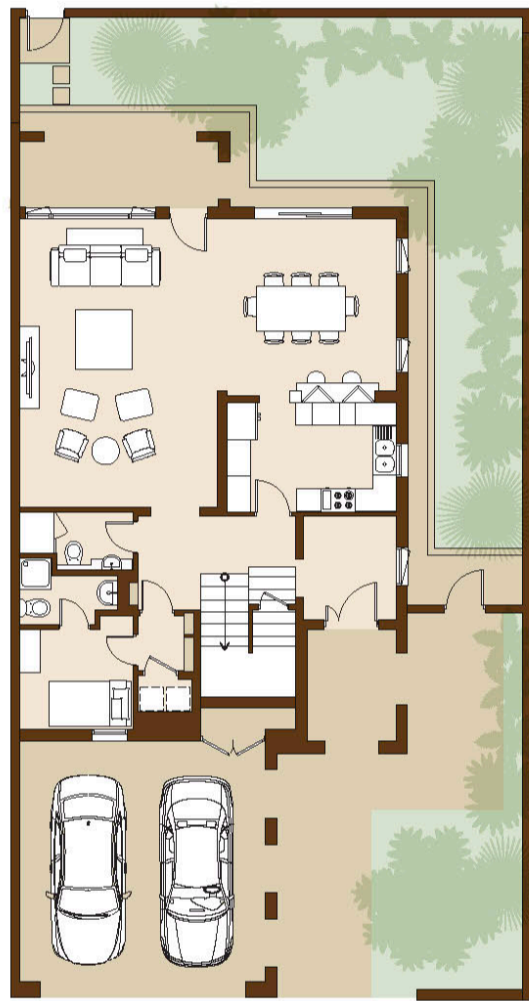


Built Up Area	262.76 m <sup>2</sup>	2,828.33 ft <sup>2</sup>
---------------	-----------------------	--------------------------

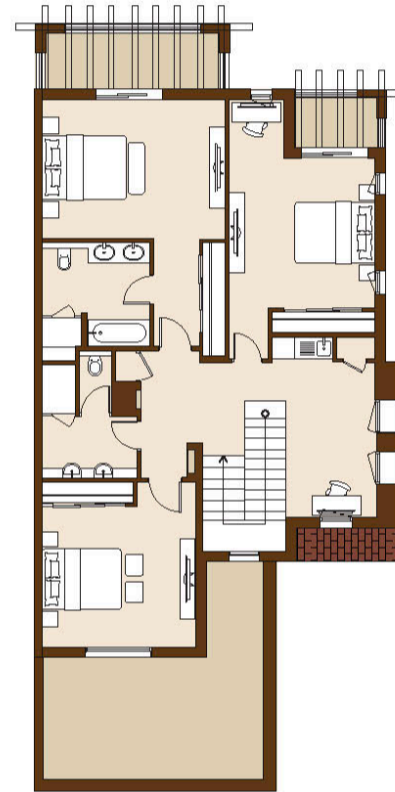
Drawings are provided by our consultants. All dimensions, features and amenities are approximate at time of printing. Actual size may vary from stated area. Drawings not to scale E & OE. The developer reserves the right to make revisions to the floor plans and any features, materials and dimensions mentioned without further notice.

# 5A

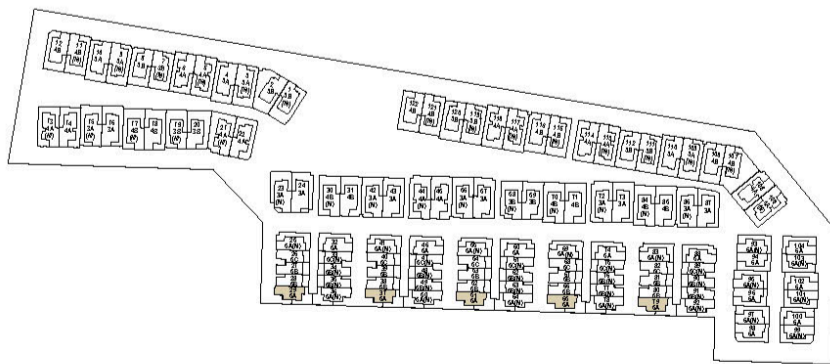
## 3 BEDROOM TOWNHOUSE Villa Numbers 29, 37, 51, 65 & 79 Type 5A



Ground Floor



First Floor



Built Up Area	316.58 m <sup>2</sup>	3,407.64 ft <sup>2</sup>
---------------	-----------------------	--------------------------

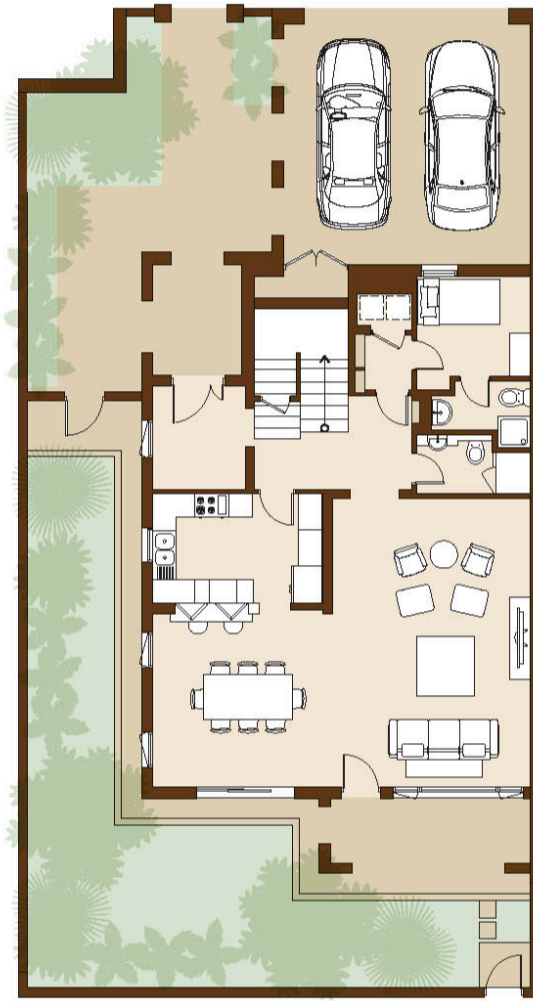
Drawings are provided by our consultants. All dimensions, features and amenities are approximate at time of printing. Actual size may vary from stated area. Drawings not to scale E & OE. The developer reserves the right to make revisions to the floor plans and any features, materials and dimensions mentioned without further notice.

# 5A

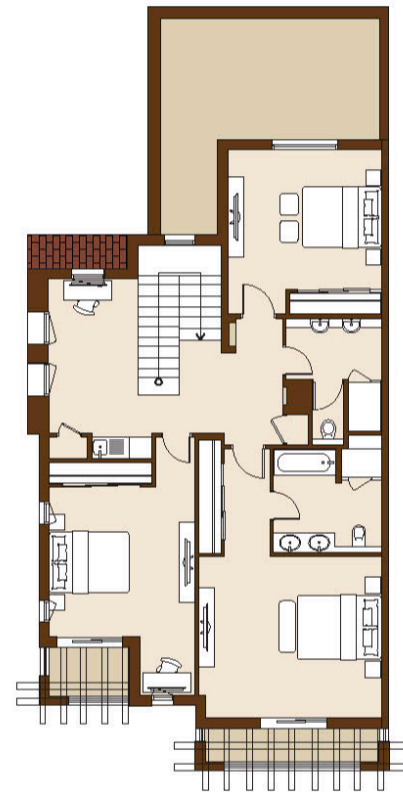
## 3 BEDROOM TOWNHOUSE

Villa Numbers 32, 46, 60, 74 & 88

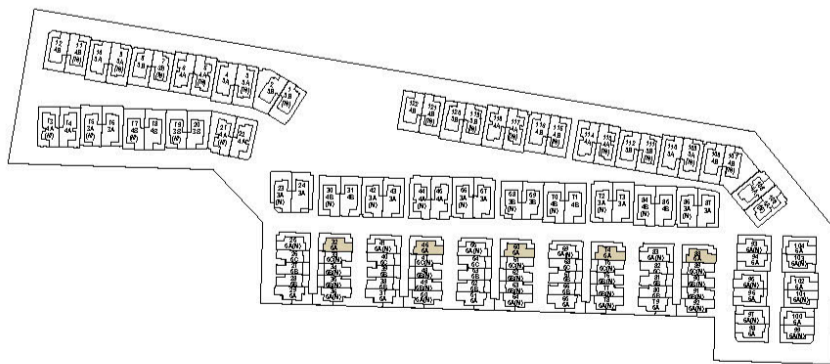
Type 5A



Ground Floor



First Floor



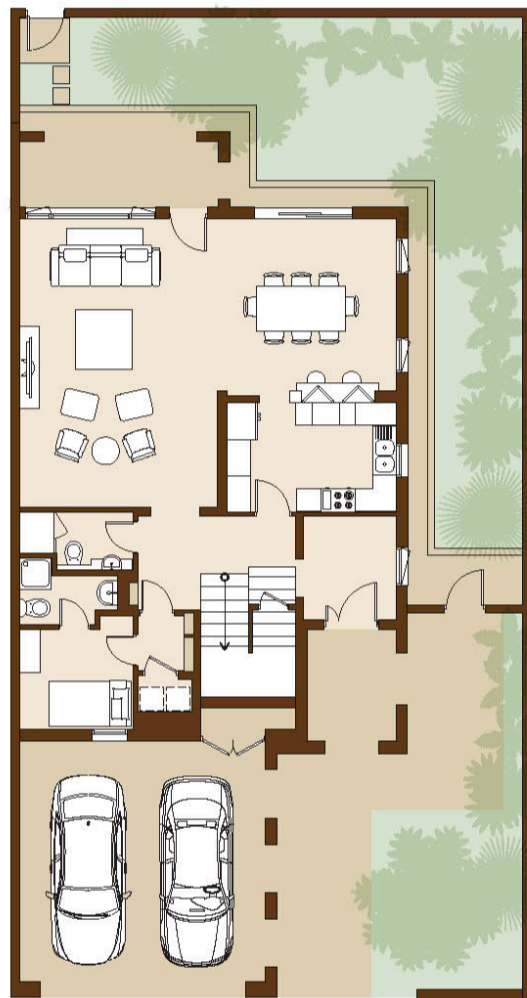
Built Up Area	316.69 m <sup>2</sup>	3,408.82 ft <sup>2</sup>
---------------	-----------------------	--------------------------

Drawings are provided by our consultants. All dimensions, features and amenities are approximate at time of printing. Actual size may vary from stated area. Drawings not to scale E & OE. The developer reserves the right to make revisions to the floor plans and any features, materials and dimensions mentioned without further notice.

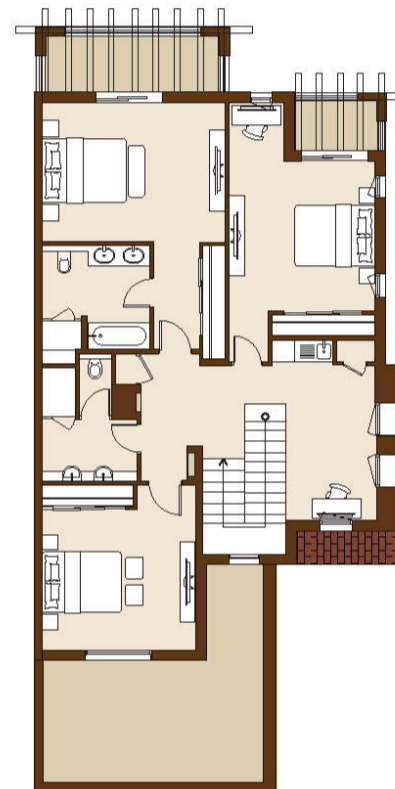


# 5A

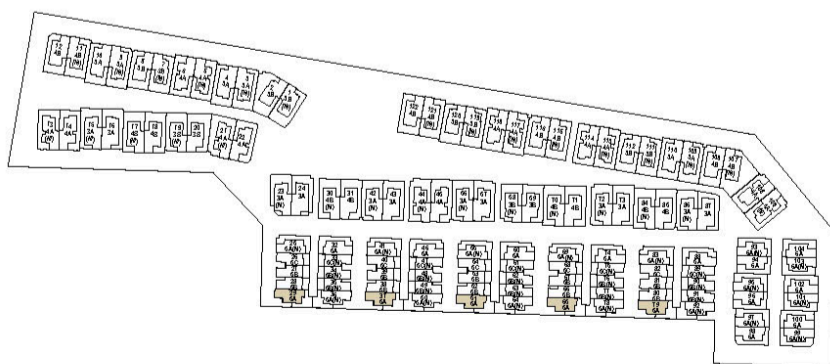
## 3 BEDROOM TOWNHOUSE Villa Numbers 29, 37, 51, 65 & 79 Type 5A



Ground Floor



First Floor

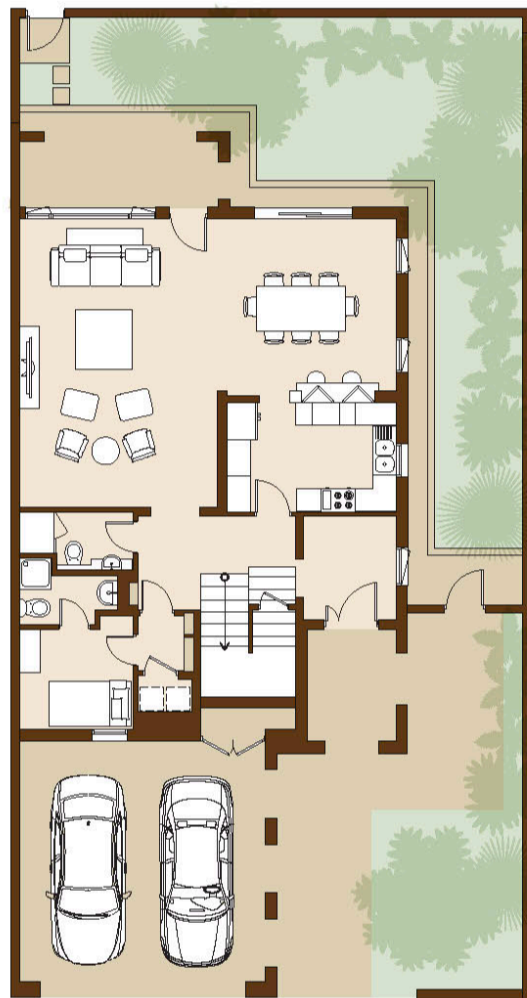


Built Up Area	316.58 m <sup>2</sup>	3,407.64 ft <sup>2</sup>
---------------	-----------------------	--------------------------

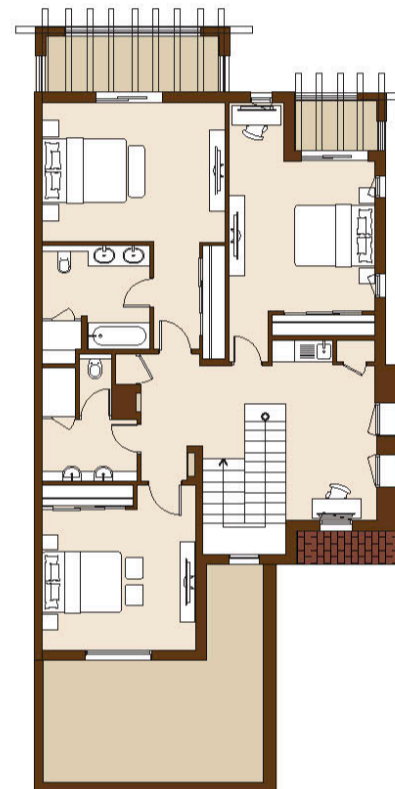
Drawings are provided by our consultants. All dimensions, features and amenities are approximate at time of printing. Actual size may vary from stated area. Drawings not to scale E & OE. The developer reserves the right to make revisions to the floor plans and any features, materials and dimensions mentioned without further notice.

# 5A

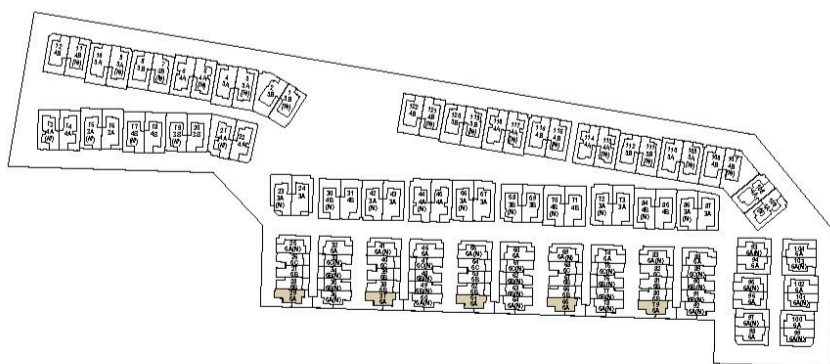
## 3 BEDROOM TOWNHOUSE Villa Numbers 29, 37, 51, 65 & 79 Type 5A



Ground Floor



First Floor

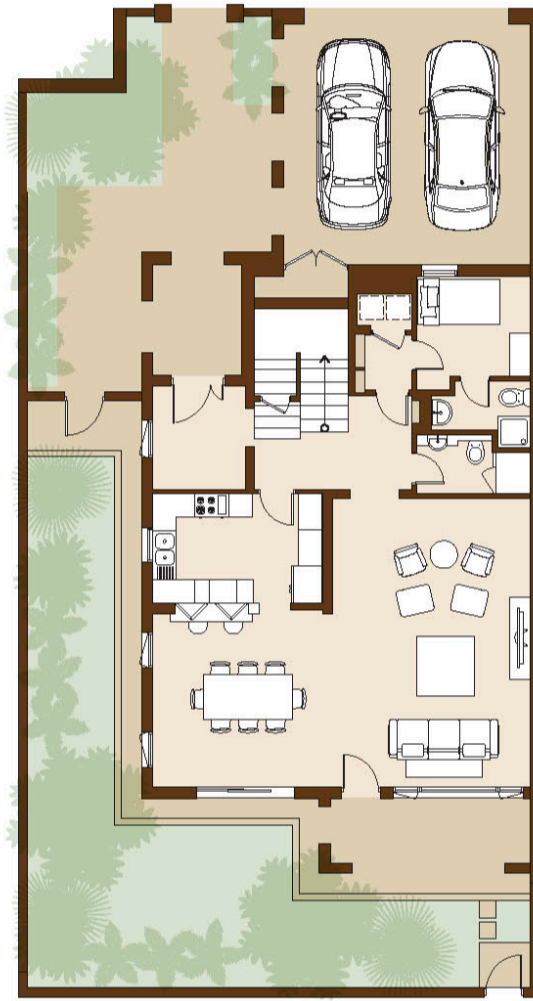


Built Up Area	316.58 m <sup>2</sup>	3,407.64 ft <sup>2</sup>
---------------	-----------------------	--------------------------

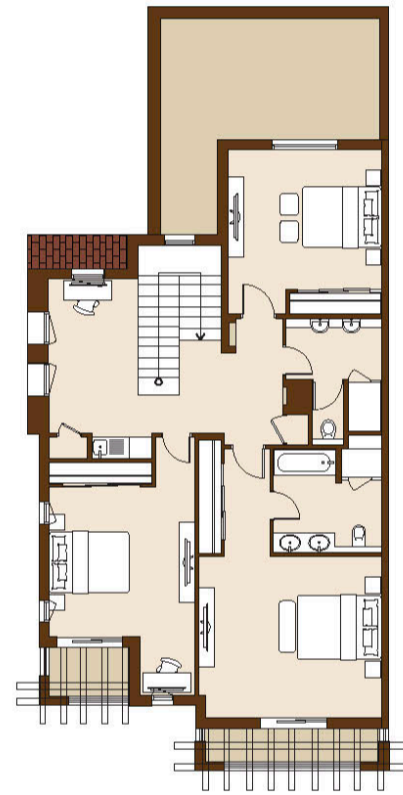
Drawings are provided by our consultants. All dimensions, features and amenities are approximate at time of printing. Actual size may vary from stated area. Drawings not to scale E & OE. The developer reserves the right to make revisions to the floor plans and any features, materials and dimensions mentioned without further notice.

# 5A

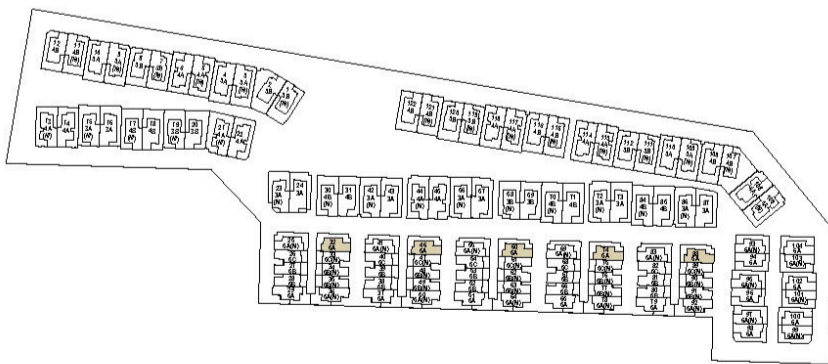
## 3 BEDROOM TOWNHOUSE Villa Numbers 32, 46, 60, 74 & 88 Type 5A



Ground Floor



First Floor

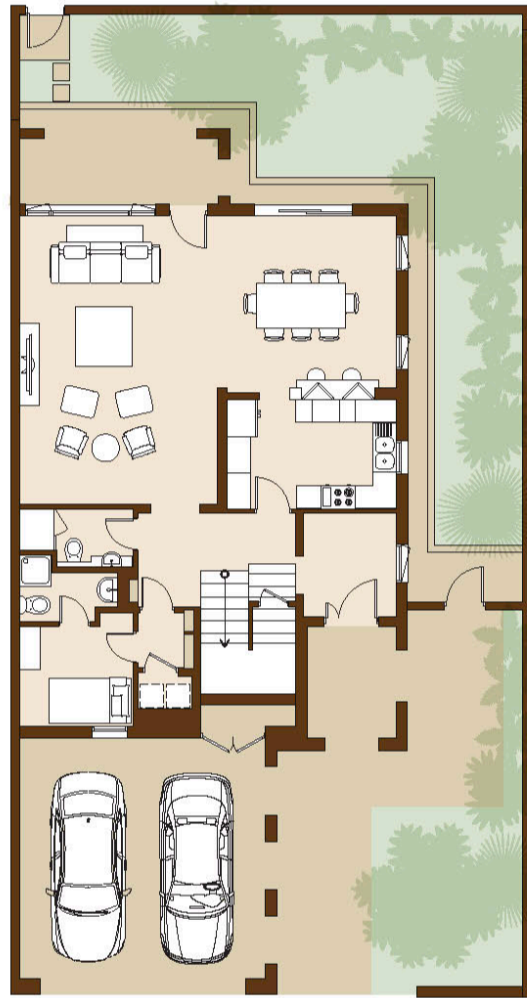


Built Up Area	316.69 m <sup>2</sup>	3,408.82 ft <sup>2</sup>
---------------	-----------------------	--------------------------

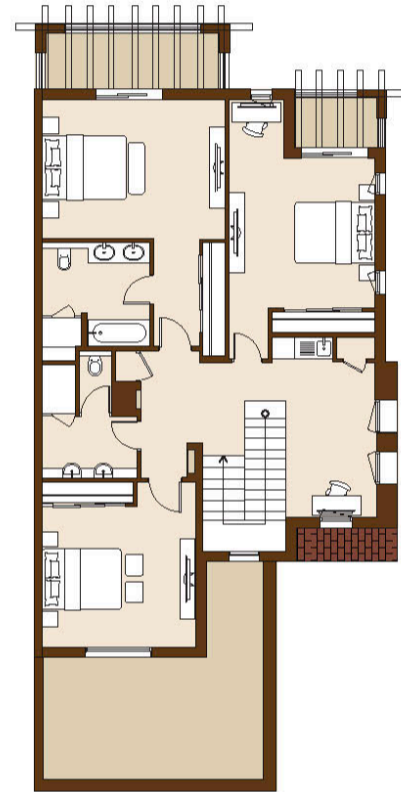
Drawings are provided by our consultants. All dimensions, features and amenities are approximate at time of printing. Actual size may vary from stated area. Drawings not to scale E & OE. The developer reserves the right to make revisions to the floor plans and any features, materials and dimensions mentioned without further notice.

# 5A

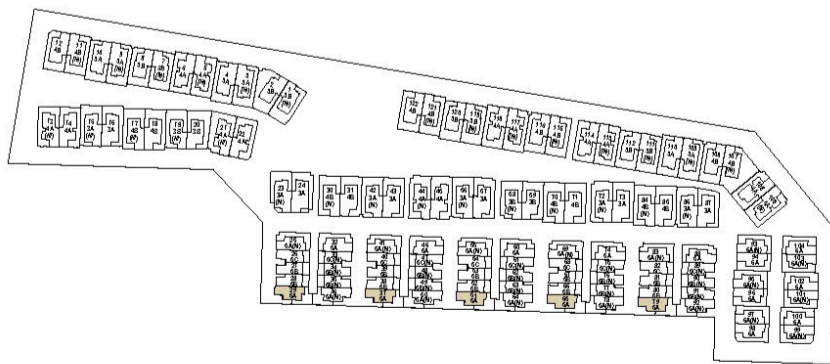
## 3 BEDROOM TOWNHOUSE Villa Numbers 29, 37, 51, 65 & 79 Type 5A



Ground Floor



First Floor

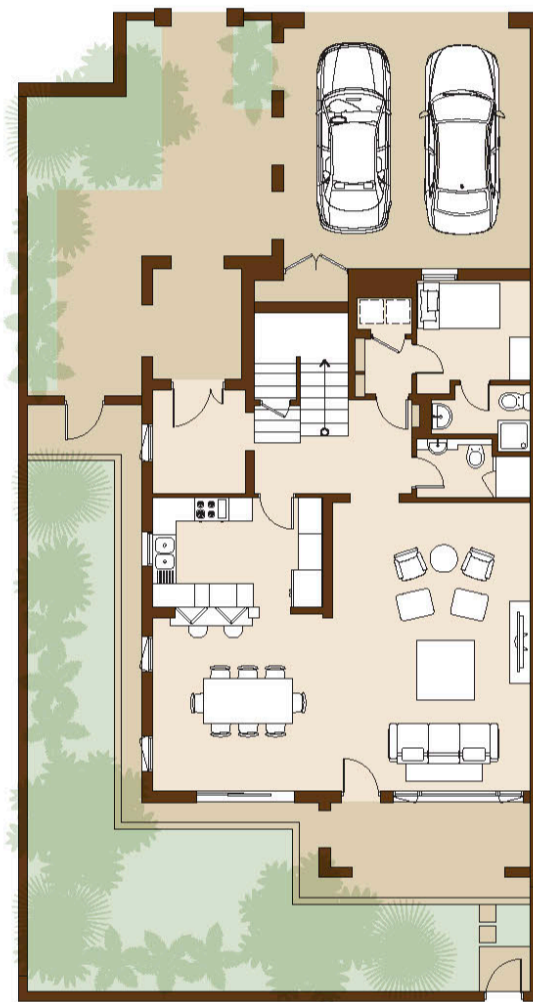


Built Up Area	316.58 m <sup>2</sup>	3,407.64 ft <sup>2</sup>
---------------	-----------------------	--------------------------

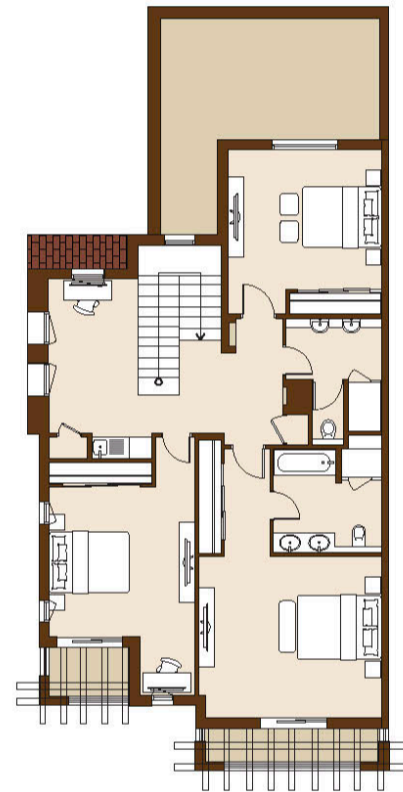
Drawings are provided by our consultants. All dimensions, features and amenities are approximate at time of printing. Actual size may vary from stated area. Drawings not to scale E & OE. The developer reserves the right to make revisions to the floor plans and any features, materials and dimensions mentioned without further notice.

# 5A

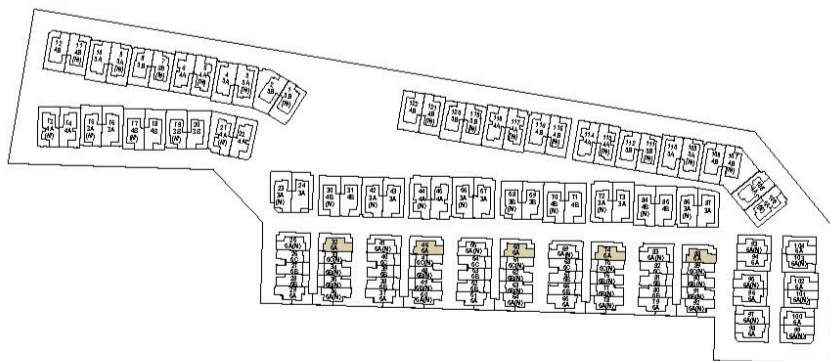
## 3 BEDROOM TOWNHOUSE Villa Numbers 32, 46, 60, 74 & 88 Type 5A



Ground Floor



First Floor

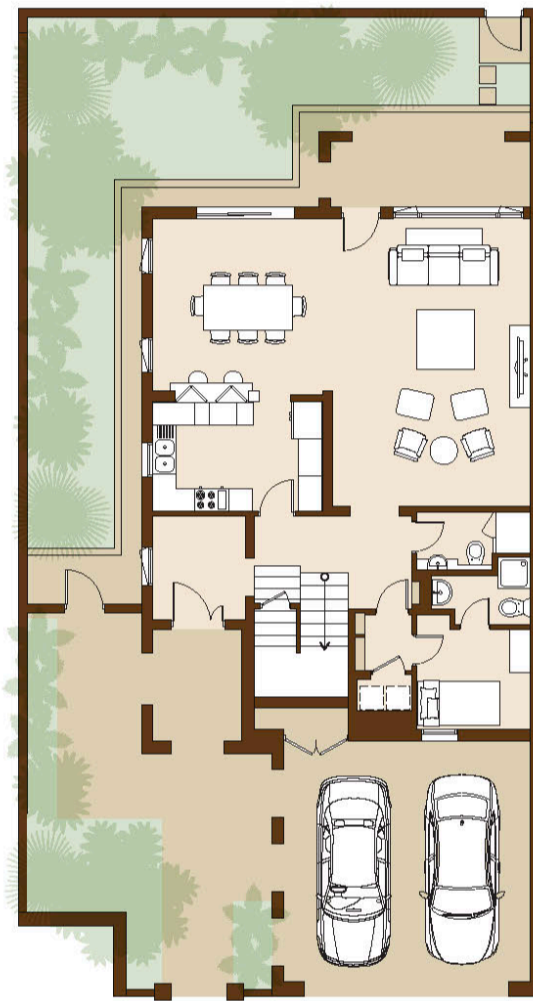


Built Up Area	316.69 m <sup>2</sup>	3,408.82 ft <sup>2</sup>
---------------	-----------------------	--------------------------

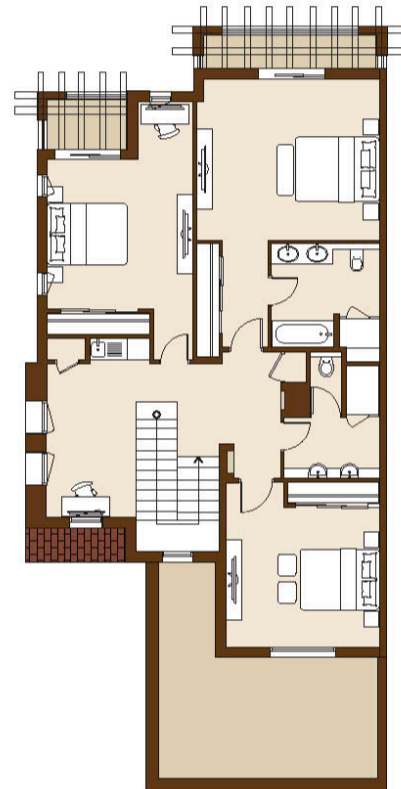
Drawings are provided by our consultants. All dimensions, features and amenities are approximate at time of printing. Actual size may vary from stated area. Drawings not to scale E & OE. The developer reserves the right to make revisions to the floor plans and any features, materials and dimensions mentioned without further notice.

# 5A(M)

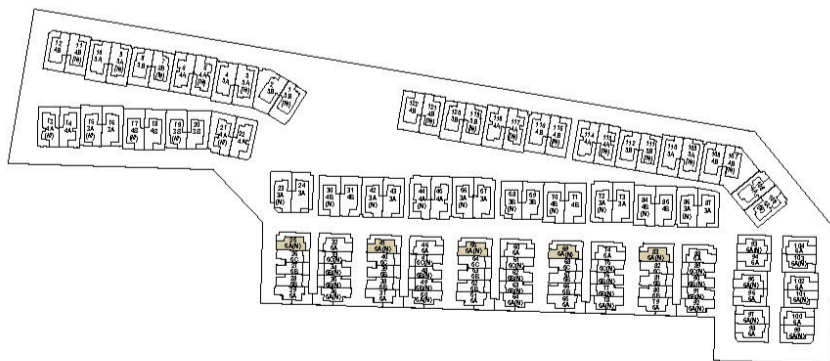
3 BEDROOM TOWNHOUSE  
Villa Numbers 25, 41, 55, 69 & 83  
Type 5A (M)



Ground Floor



First Floor



Built Up Area	316.69 m <sup>2</sup>	3,408.82 ft <sup>2</sup>
---------------	-----------------------	--------------------------

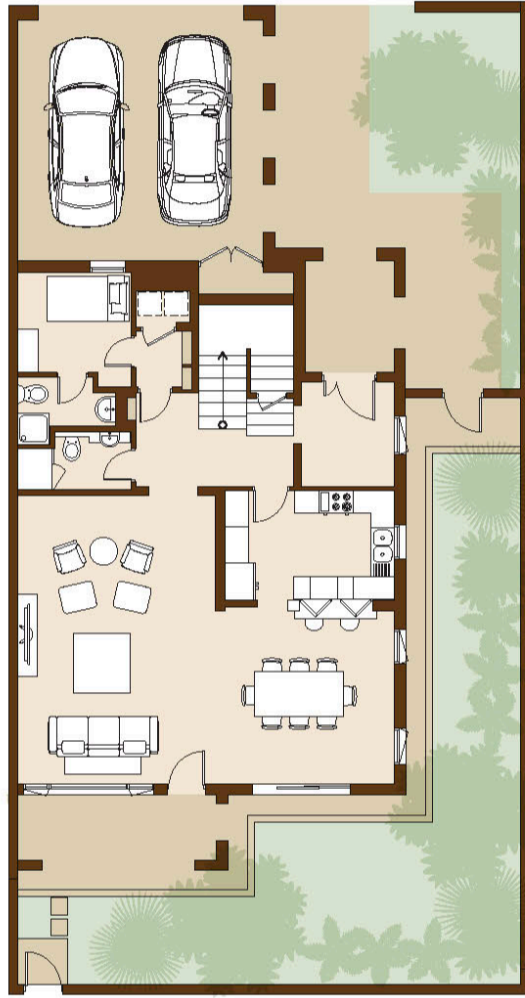
Drawings are provided by our consultants. All dimensions, features and amenities are approximate at time of printing. Actual size may vary from stated area. Drawings not to scale E & OE. The developer reserves the right to make revisions to the floor plans and any features, materials and dimensions mentioned without further notice.

# 5A(M)

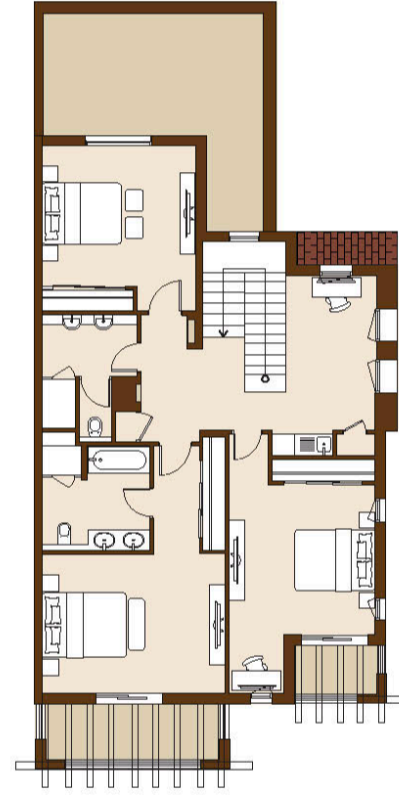
## 3 BEDROOM TOWNHOUSE

Villa Numbers 36, 50, 64, 78 & 92

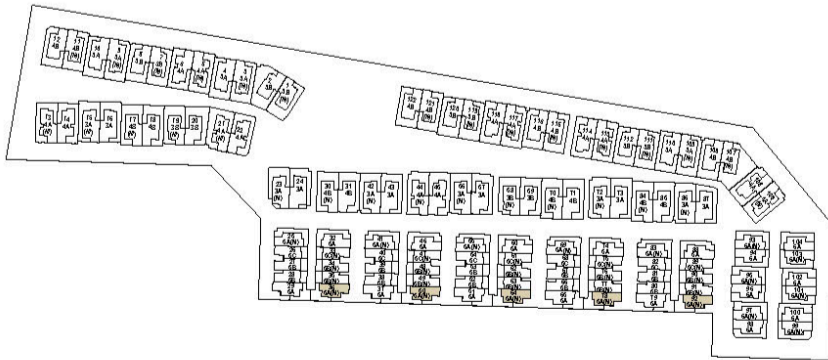
Type 5A (M)



Ground Floor



First Floor

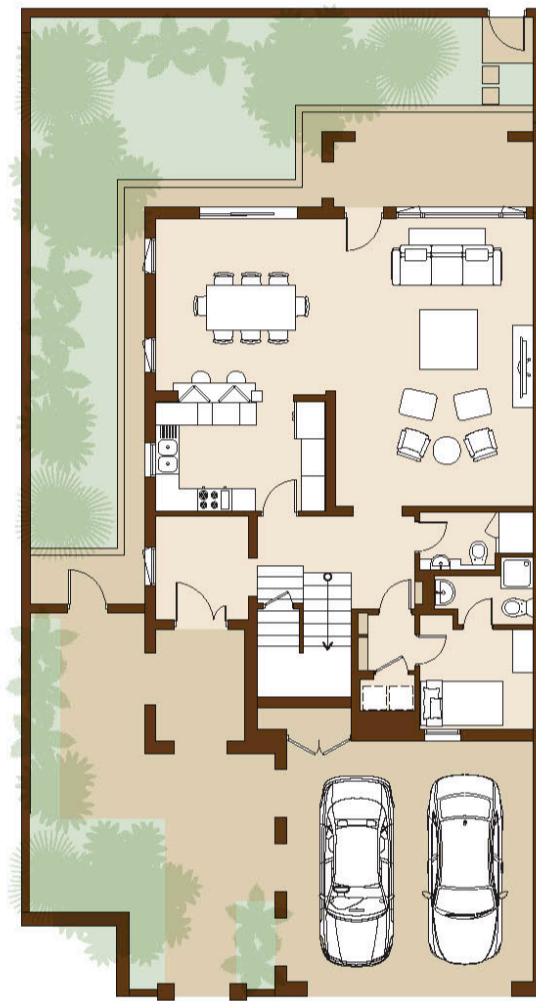


Built Up Area	316.58 m <sup>2</sup>	3,407.64 ft <sup>2</sup>
---------------	-----------------------	--------------------------

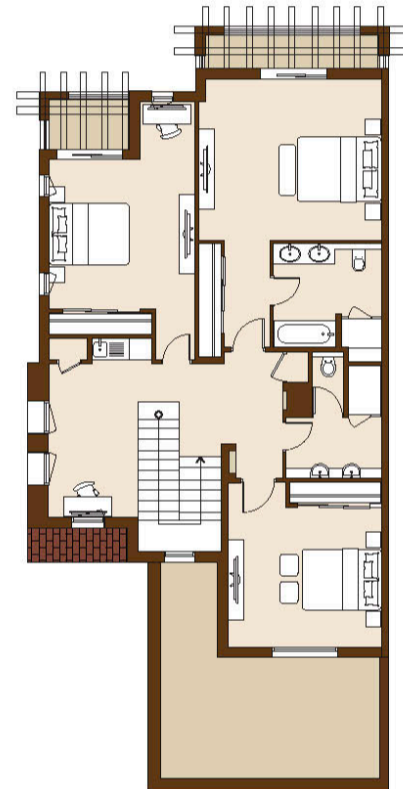
Drawings are provided by our consultants. All dimensions, features and amenities are approximate at time of printing. Actual size may vary from stated area. Drawings not to scale E & OE. The developer reserves the right to make revisions to the floor plans and any features, materials and dimensions mentioned without further notice.

# 5A(M)

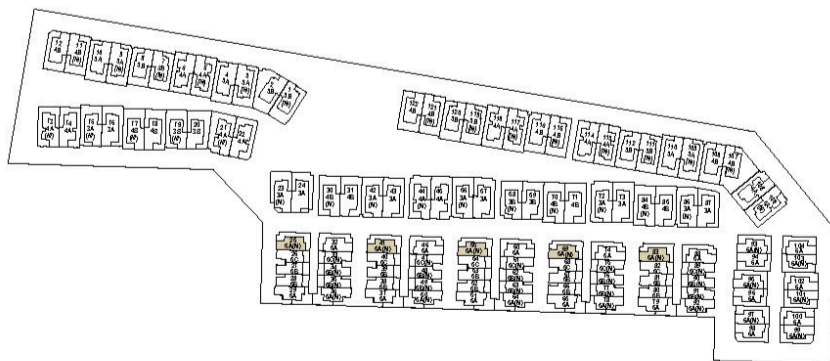
3 BEDROOM TOWNHOUSE  
Villa Numbers 25, 41, 55, 69 & 83  
Type 5A (M)



Ground Floor



First Floor



Built Up Area	316.69 m <sup>2</sup>	3,408.82 ft <sup>2</sup>
---------------	-----------------------	--------------------------

Drawings are provided by our consultants. All dimensions, features and amenities are approximate at time of printing. Actual size may vary from stated area. Drawings not to scale E & OE. The developer reserves the right to make revisions to the floor plans and any features, materials and dimensions mentioned without further notice.

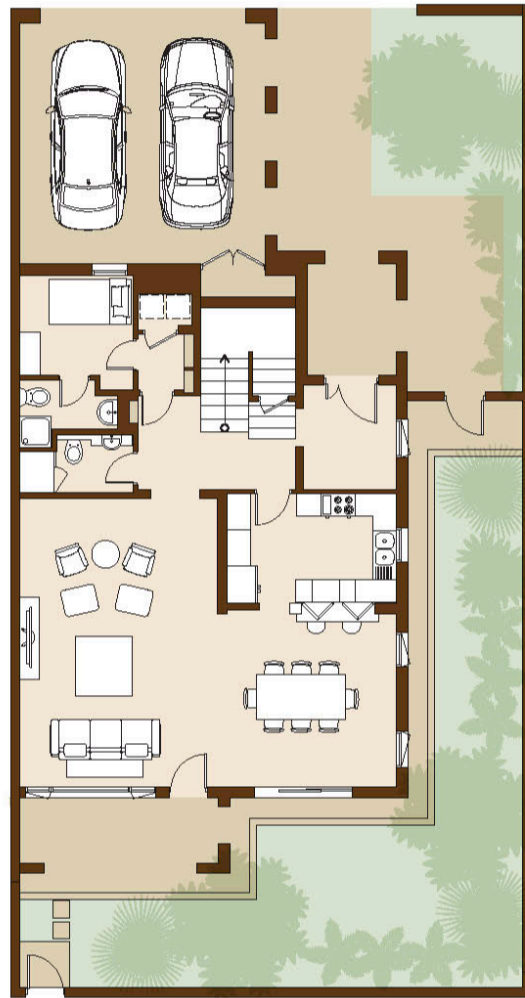


# 5A(M)

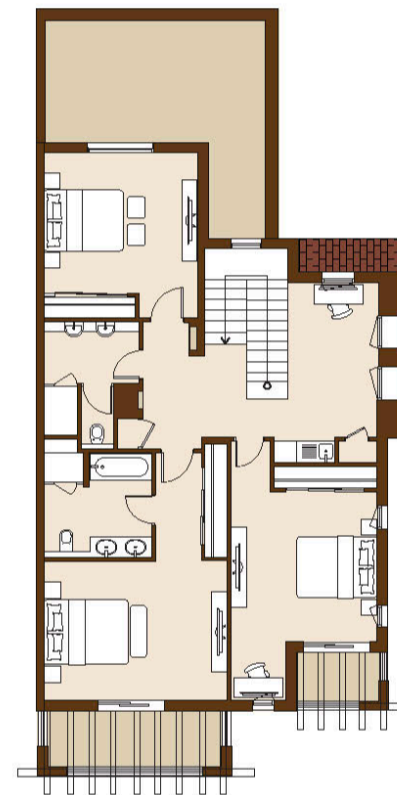
## 3 BEDROOM TOWNHOUSE

Villa Numbers 36, 50, 64, 78 & 92

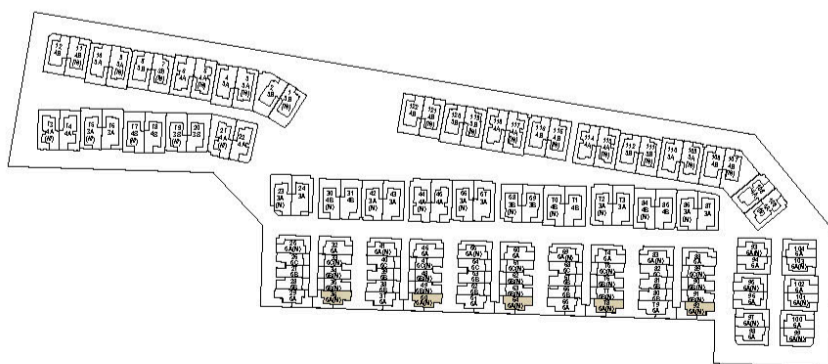
Type 5A (M)



Ground Floor



First Floor

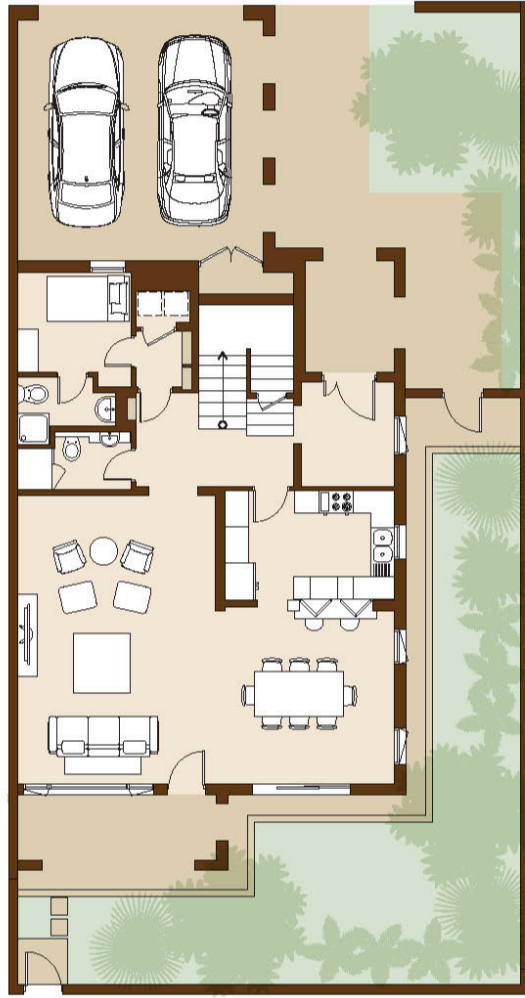


Built Up Area	316.58 m <sup>2</sup>	3,407.64 ft <sup>2</sup>
---------------	-----------------------	--------------------------

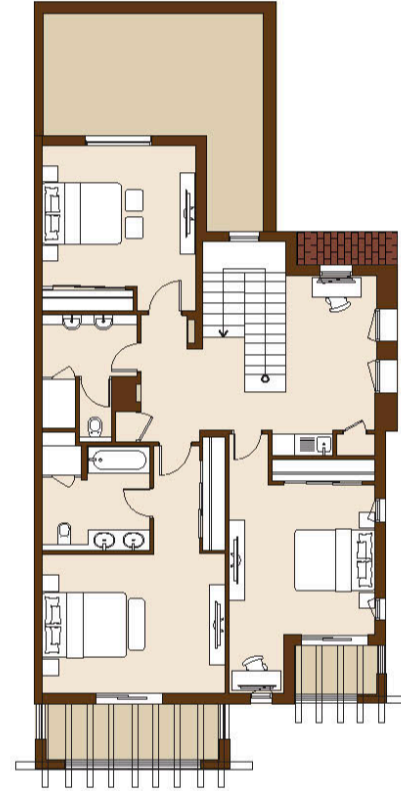
Drawings are provided by our consultants. All dimensions, features and amenities are approximate at time of printing. Actual size may vary from stated area. Drawings not to scale E & OE. The developer reserves the right to make revisions to the floor plans and any features, materials and dimensions mentioned without further notice.

# 5A(M)

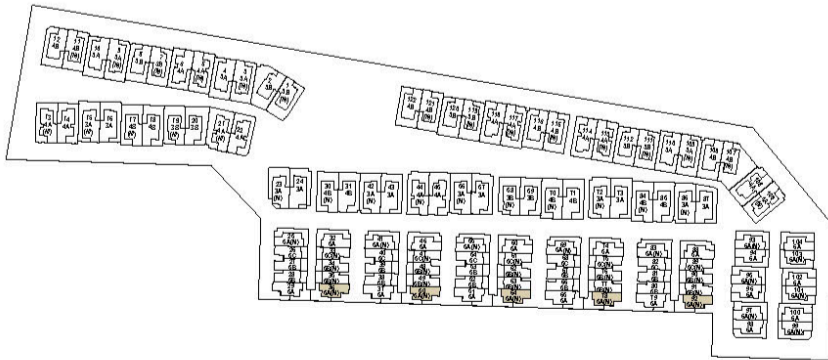
3 BEDROOM TOWNHOUSE  
Villa Numbers 36, 50, 64, 78 & 92  
Type 5A (M)



Ground Floor



First Floor

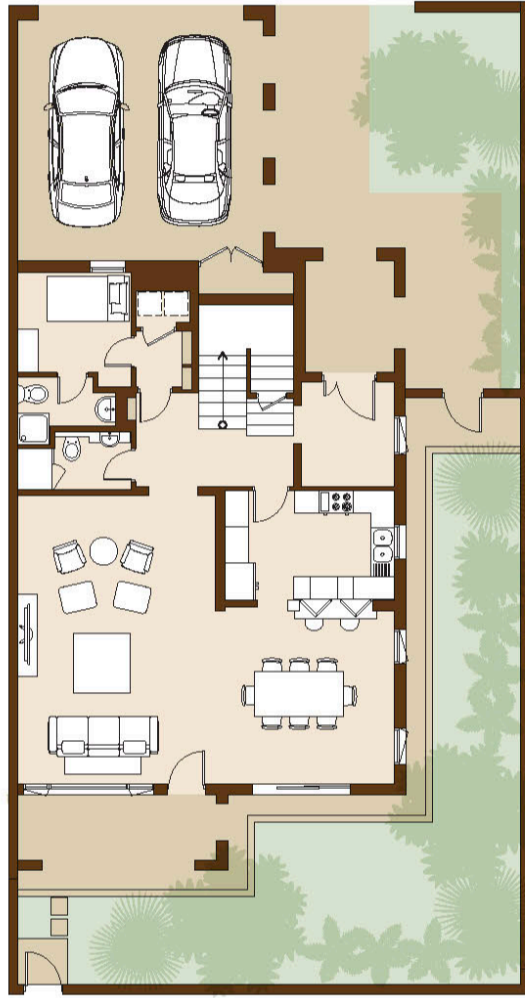


Built Up Area	316.58 m <sup>2</sup>	3,407.64 ft <sup>2</sup>
---------------	-----------------------	--------------------------

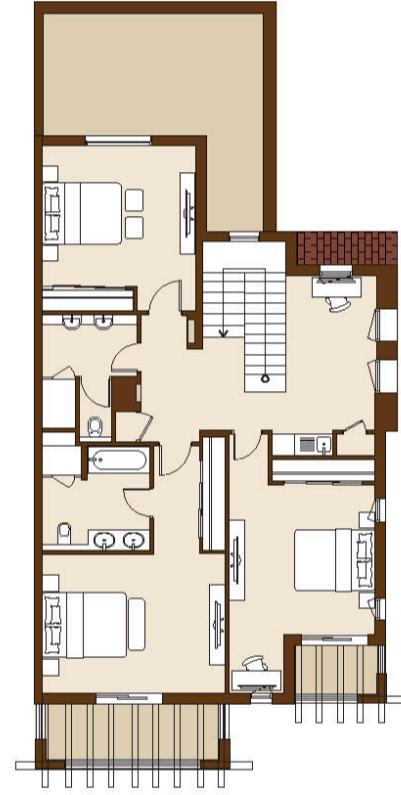
Drawings are provided by our consultants. All dimensions, features and amenities are approximate at time of printing. Actual size may vary from stated area. Drawings not to scale E & OE. The developer reserves the right to make revisions to the floor plans and any features, materials and dimensions mentioned without further notice.

# 5A(M)

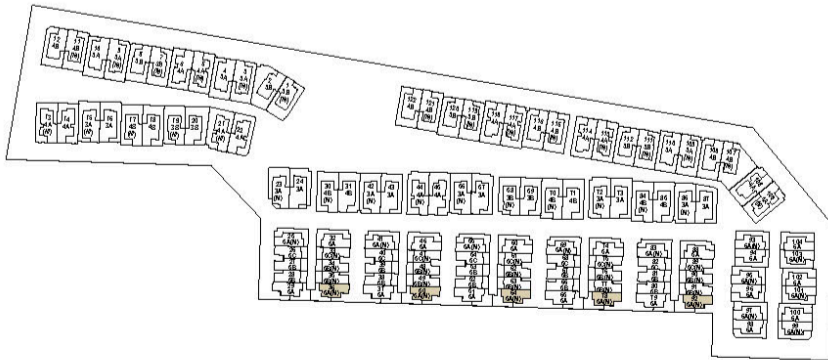
3 BEDROOM TOWNHOUSE  
Villa Numbers 36, 50, 64, 78 & 92  
Type 5A (M)



Ground Floor



First Floor

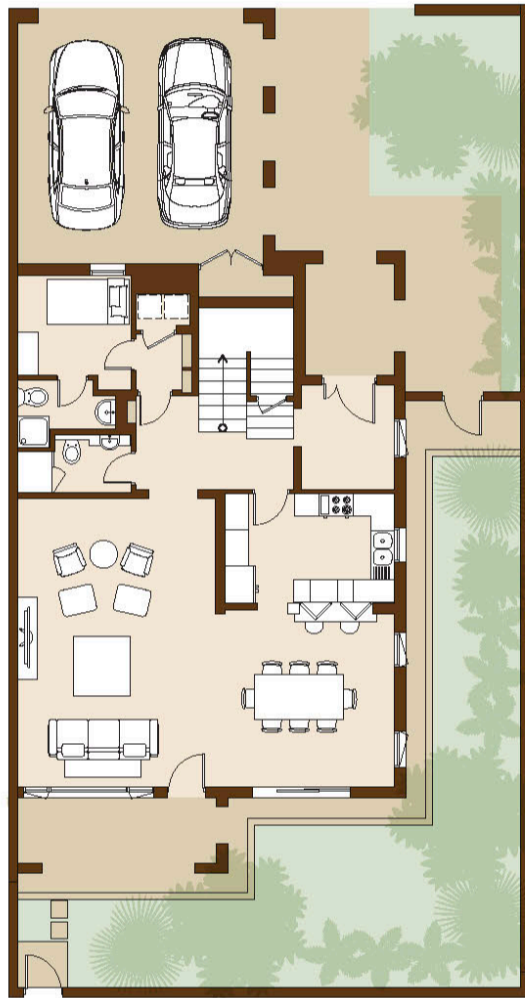


Built Up Area	316.58 m <sup>2</sup>	3,407.64 ft <sup>2</sup>
---------------	-----------------------	--------------------------

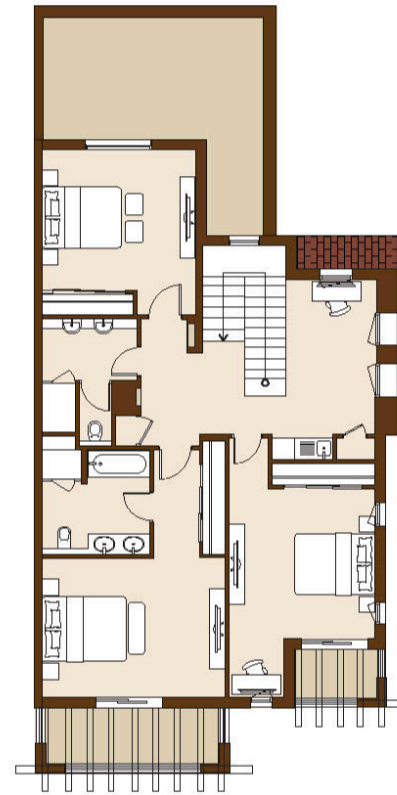
Drawings are provided by our consultants. All dimensions, features and amenities are approximate at time of printing. Actual size may vary from stated area. Drawings not to scale E & OE. The developer reserves the right to make revisions to the floor plans and any features, materials and dimensions mentioned without further notice.

# 5A(M)

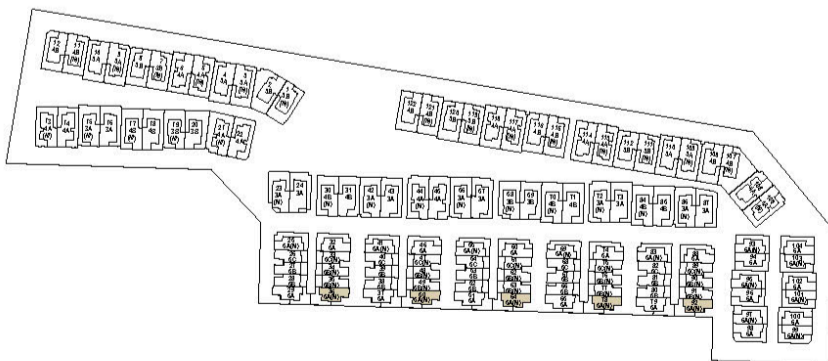
3 BEDROOM TOWNHOUSE  
Villa Numbers 36, 50, 64, 78 & 92  
Type 5A (M)



Ground Floor



First Floor

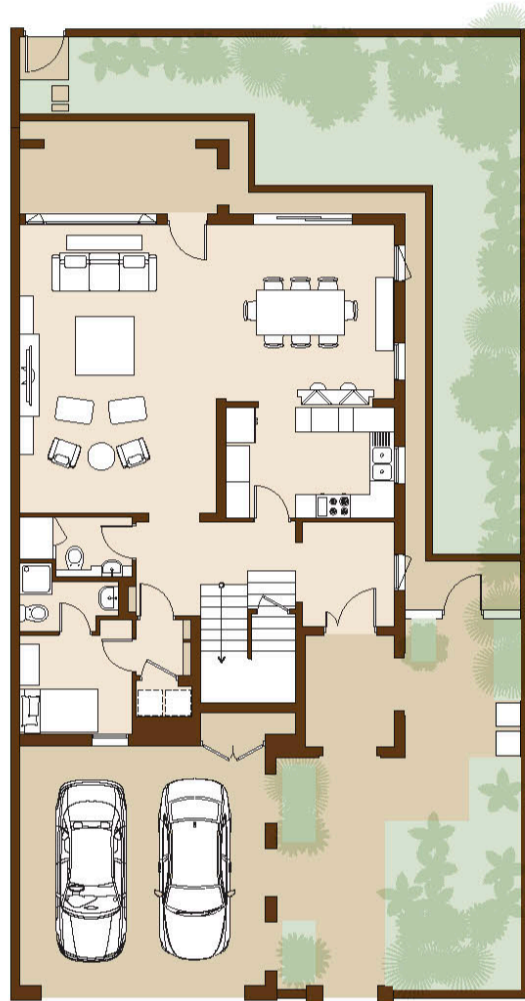


Built Up Area	316.58 m <sup>2</sup>	3,407.64 ft <sup>2</sup>
---------------	-----------------------	--------------------------

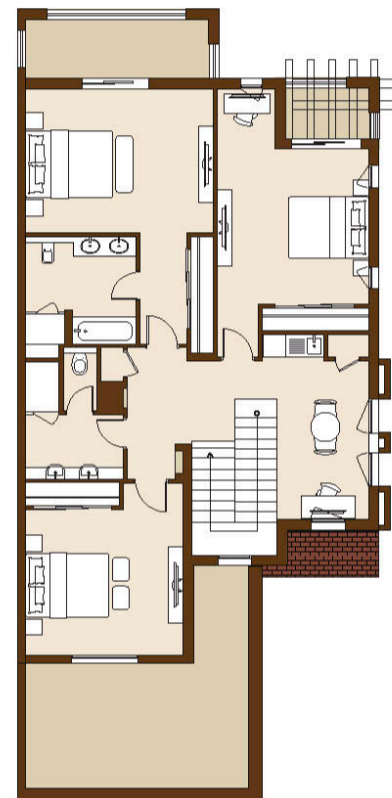
Drawings are provided by our consultants. All dimensions, features and amenities are approximate at time of printing. Actual size may vary from stated area. Drawings not to scale E & OE. The developer reserves the right to make revisions to the floor plans and any features, materials and dimensions mentioned without further notice.

# 6A

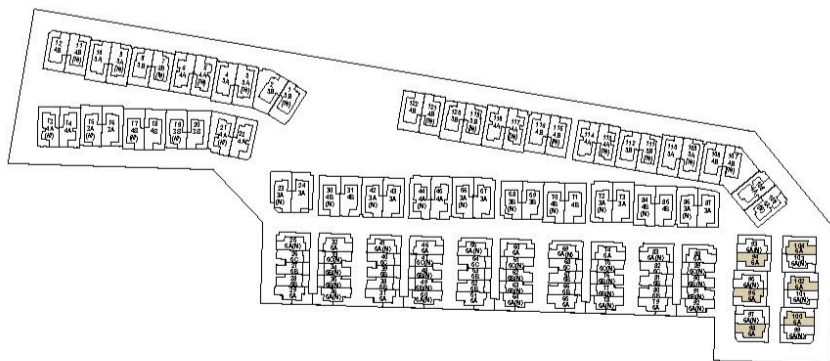
## 3 BEDROOM VILLA Villa Numbers 94, 96, 98, 100, 102 & 104 Type 6A



Ground Floor



First Floor

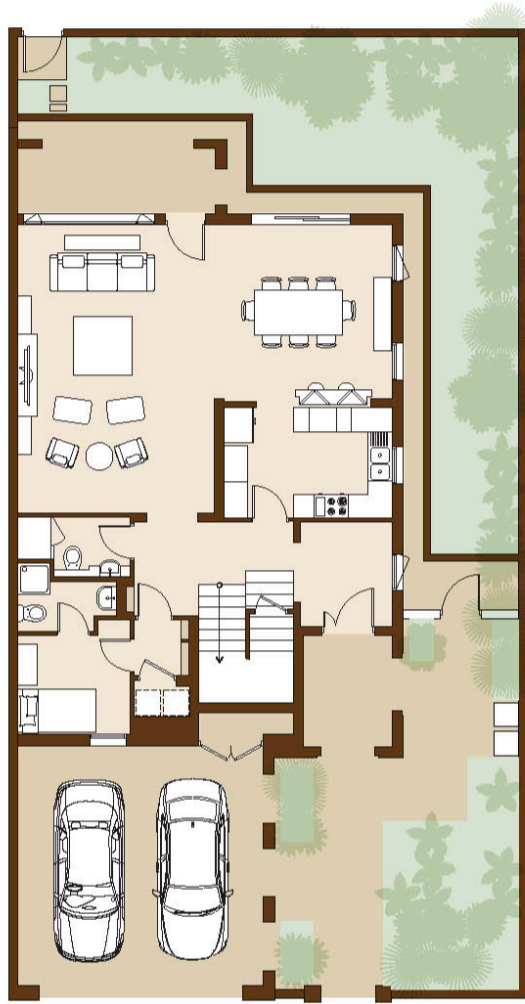


Built Up Area	316.08 m <sup>2</sup>	3,402.26 ft <sup>2</sup>
---------------	-----------------------	--------------------------

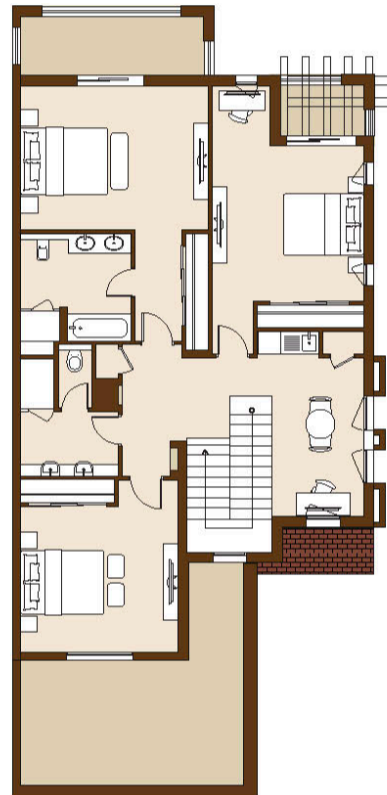
Drawings are provided by our consultants. All dimensions, features and amenities are approximate at time of printing. Actual size may vary from stated area. Drawings not to scale E & OE. The developer reserves the right to make revisions to the floor plans and any features, materials and dimensions mentioned without further notice.

# 6A

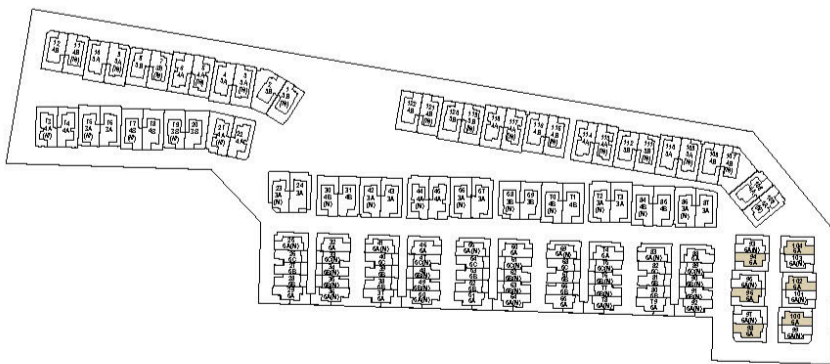
## 3 BEDROOM VILLA Villa Numbers 94, 96, 98, 100, 102 & 104 Type 6A



Ground Floor



First Floor



Built Up Area	316.08 m <sup>2</sup>	3,402.26 ft <sup>2</sup>
---------------	-----------------------	--------------------------

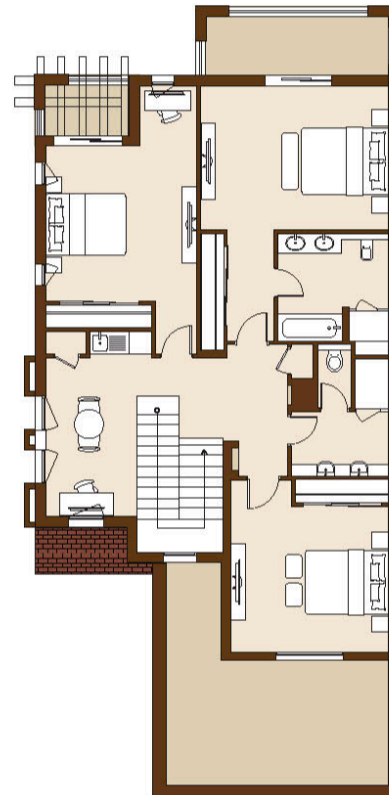
Drawings are provided by our consultants. All dimensions, features and amenities are approximate at time of printing. Actual size may vary from stated area. Drawings not to scale E & OE. The developer reserves the right to make revisions to the floor plans and any features, materials and dimensions mentioned without further notice.

# 6A(M)

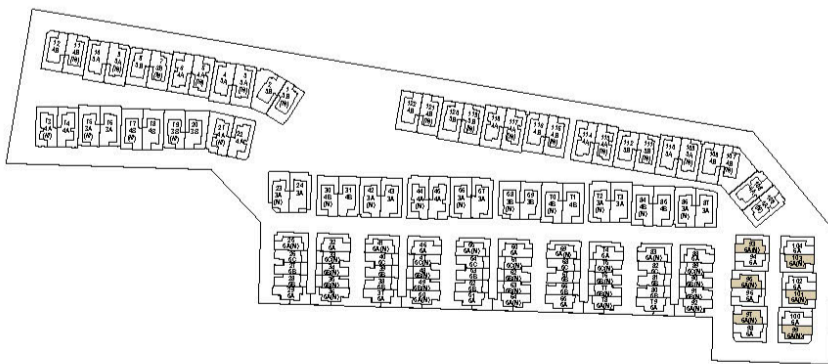
3 BEDROOM VILLA  
Villa Numbers 93, 95, 97, 99, 101 & 103  
Type 6A (M)



Ground Floor



First Floor

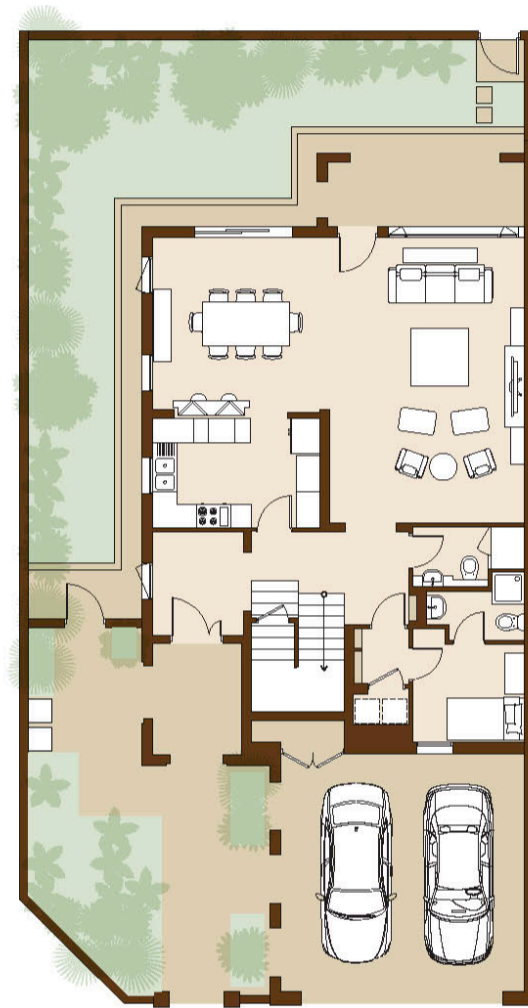


Built Up Area	316.08 m <sup>2</sup>	3,402.26 ft <sup>2</sup>
---------------	-----------------------	--------------------------

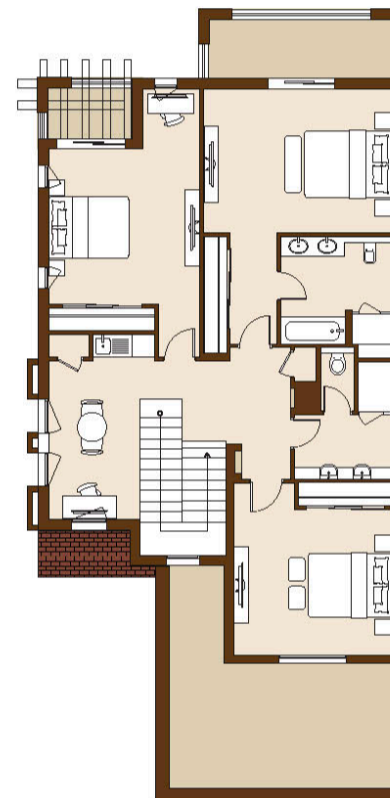
Drawings are provided by our consultants. All dimensions, features and amenities are approximate at time of printing. Actual size may vary from stated area. Drawings not to scale E & OE. The developer reserves the right to make revisions to the floor plans and any features, materials and dimensions mentioned without further notice.

# 6A(M)

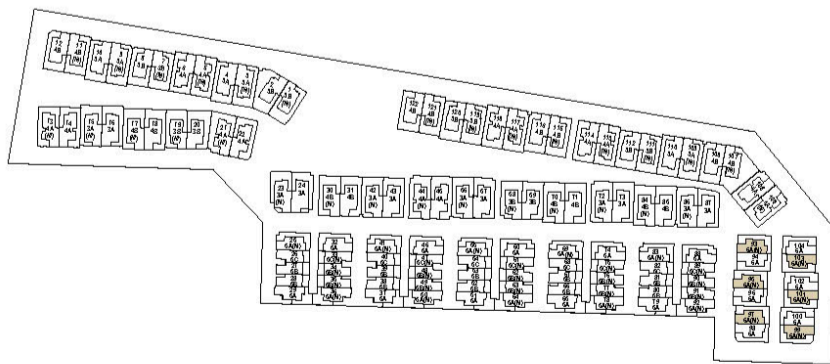
3 BEDROOM VILLA  
Villa Numbers 93, 95, 97, 99, 101 & 103  
Type 6A (M)



Ground Floor



First Floor



Built Up Area	316.08 m <sup>2</sup>	3,402.26 ft <sup>2</sup>
---------------	-----------------------	--------------------------

Drawings are provided by our consultants. All dimensions, features and amenities are approximate at time of printing. Actual size may vary from stated area. Drawings not to scale E & OE. The developer reserves the right to make revisions to the floor plans and any features, materials and dimensions mentioned without further notice.



## CONTACT INFORMATION

800 100 001

+971 4 368 3355

+971 52 459 6183

[sales@select-group.ae](mailto:sales@select-group.ae)

[www.select-group.ae](http://www.select-group.ae)