

27 YEARS OF EXPERIENCE



HAWAII HOMES

BAHAMAS HOMES



Maldives Homes
ESETEPE



MYKONOS HOMES



PEARL ISLAND



IDYLL
IDYLIC AFFORDABLE LUXURY



MOONLIGHT VILLAS

NORTH CYPRUS



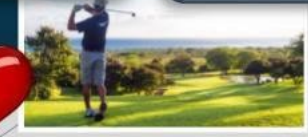
KARPAZ



KYRENIA



ESENTEPE



GUZELYURT



LEFKOŞA



ERCAN



FAMAGUSTA



LARNACA



PAPHOS

Where Dreams Come True



"We are not only building a house, we are building a new lifestyle"





Maldives Homes

— ESENTEPE —







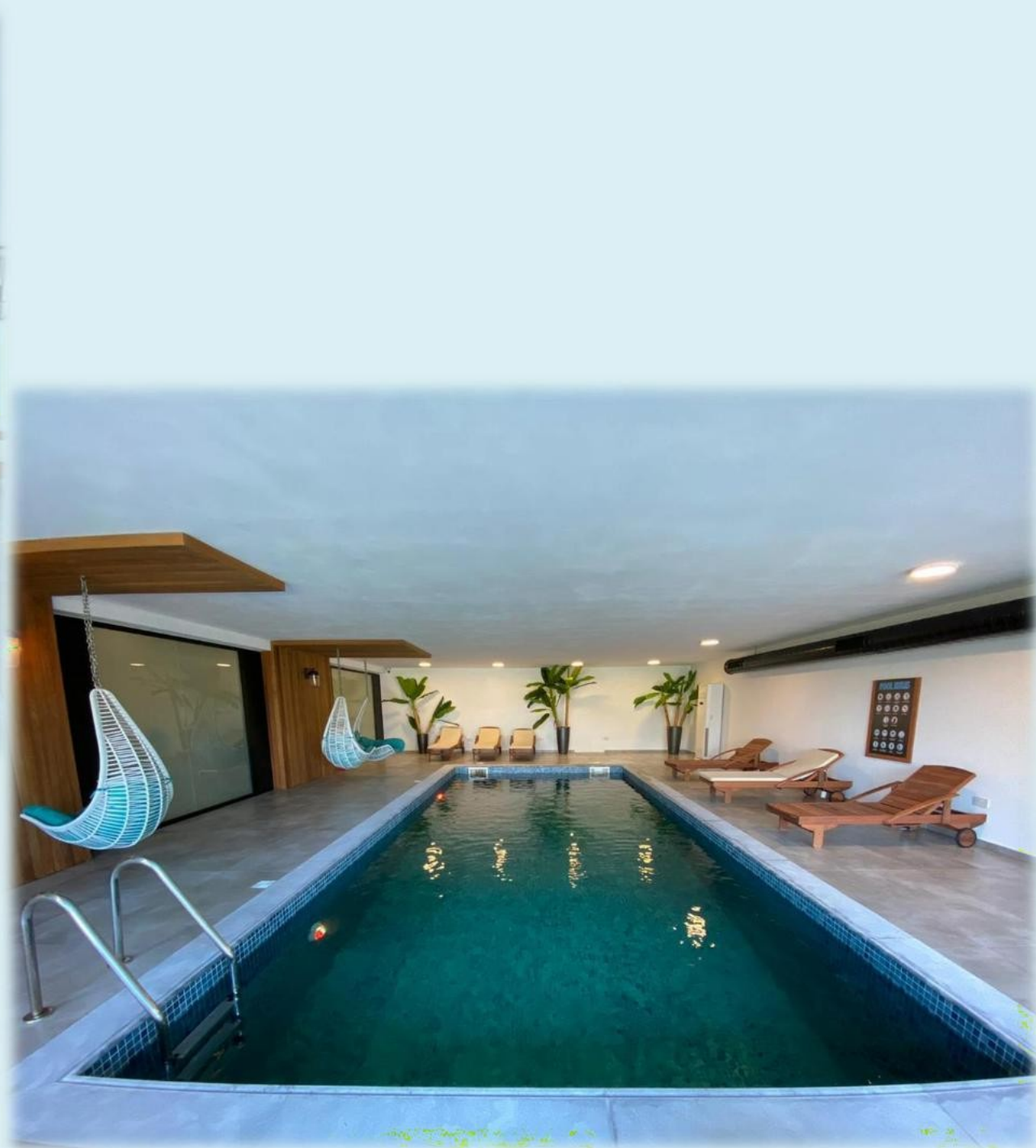


Maldives Homes
— ESENTEPE —

Leisure Center



Indoor heated swimming pool





Massage Room





Turkish hamam & Chilling room
Shock Shower & Sauna



Tennis Court
&
Basketball Court
Court



Beauty Centre

Fitness Center





Californian
R e s t a u r a n t









Meeting Room

HIGH-END SPECIFICATIONS

ВЫСОКОКАЧЕСТВЕННАЯ ЛАКИРОВАННАЯ КРАШЕННАЯ ОБОРУДОВАННАЯ
КУХНЯ И ГАРДЕРОБЫ

- ✓ TOP QUALITY LACQUERED PAINTED FITTED KITCHEN & WARDROBES

ВЫСОКОКАЧЕСТВЕННЫЕ ВНУТРЕННИЕ И СОВРЕМЕННЫЕ
ВХОДНЫЕ ДВЕРИ

- ✓ HIGH QUALITY DESIGNER INTERNAL DOORS & CONTEMPORARY ENTRANCE DOOR

МРАМОРНЫЕ ЛЕСТНИЦЫ, НАТУРАЛЬНЫЕ КАМЕННЫЕ СТЕНЫ И
ФАРФОРОВЫЕ ПЛИТКИ

- ✓ MARBLE STAIRCASE & NATURAL STONE COVERED WALLS & PORCELAIN TILES

ИНВЕРТОРНАЯ СИСТЕМА КОНДИЦИОНИРОВАНИЯ ВОЗДУХА ДЛЯ
ВСЕХ КОМНАТ

- ✓ INVERTER AIR CONDITIONING SYSTEM FOR ALL ROOMS

ВЫСОКОКАЧЕСТВЕННОЕ ОБОРУДОВАНИЕ ДЛЯ
ВАННОЙ

- ✓ HIGH-END BATHROOM FITTINGS

НАПОЛЬНАЯ ИНФРАСТРУКТУРА ОТОПЛЕНИЯ ДЛЯ СИСТЕМЫ
ТЕПЛОГО НАСОСА

- ✓ UNDERFLOOR HEATING INERASTRUCTURE FOR HEAT PUMP SYSTEM

ПОДВЕСНОЙ ПОТОЛОК СО СВЕТОДИОДНОЙ
ПОДСВЕТКОЙ

- ✓ FULL HEIGHT SUSPENDEED CEILING WITH LED SPOT & STRIP LIGHTS

АЛЮМИНИЕВЫЕ РАЗДВИЖНЫЕ ДВЕРИ И ОКНА МАРКИ COSMOS КОМФОРТ СТЕКЛО &
ДВОЙНОЕ ОСТЕКЛЕНИЕ

- ✓ COSMOS BRAND BLACK ALUMINIUM SLIDING DOORS & WINDOWS

АЛЮМИНИЕВЫЕ ПЕРГОЛЫ НЕ НУЖДАЮЩИЕЙСЯ В
ОБСЛУЖИВАНИИ &

- ✓ COMFORT GLASS & DOUBLE GLAZED WOODEN LUXURY GLAZED

FRANKE

HÄFELE
FINDING BETTER WAYS

KUTAHYA
PORSELEN



BOSCH



■ GEBERIT



hangrohe



ABB

Power and productivity
for a better world™



MAINTENANCE SERVICES



Обслуживание

бассейнов Swimming Pool

Maintenance

Обслуживание

садов Gardening Maintenance

Уборка

резиденции Cleaning of the site

Центр досуга и все удобства на свежем

воздухе Leisure centre & all outdoor amenities

Пляж & Удобства на

пляже Beach & Beach Facilities

Резервная генераторная

система Stand-by generator

24/7 Услуги Управляющей

компании 24/7 Management

Система охранного видеонаблюдения на

территории CCTV Security Camera System on

Бесплатный трансфер до гольфа и

супермаркета Transfer Service to Golf and Supermarket
(Free)

Maintenance Fees:

- ▶ MALDIVES HOMES => Only £120 per month/ежемесячно



BAHAMAS HOMES

coming soon to change your

lifestyle



BAHAMAS HOMES

THREE PHASES,
ONE COMMUNITY,
FROM SEA TO
MOUNTAINS

- PHASE 1 113 UNITS
- PHASE 2 284 UNITS
- PHASE 3 304 UNITS





Phase 2

Phase 1

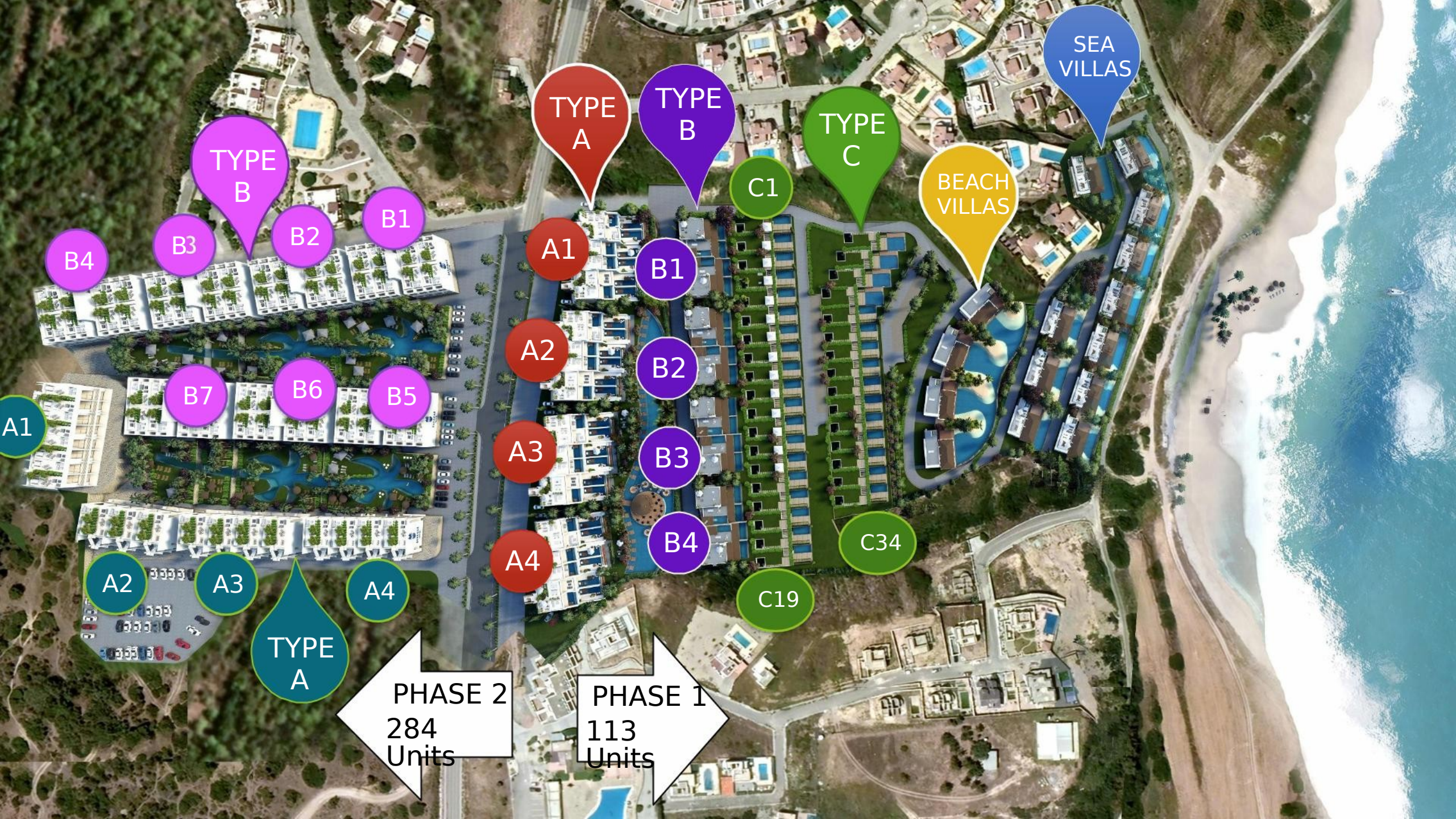
Phase 3

Unique Sea & Mountain
View



Elevated
Landscape





SEA VILLAS

BEACH VILLAS

TYPE C

TYPE B

TYPE A

TYPE B

TYPE A

PHASE 2
284
Units

PHASE 1
113
Units

C19

C34

C1

A4

A3

A2

A1

B4

B3

B2

B1

B7

B6

B5

B3

B2

B1

B4

A1

A2

A3

A4



BAHAMAS
HOMES 3

224 Studio
30 units 1+1
Garden
30 units 2+1
Penthouse

PHASE
II



PHASE
II





PHASE
II





Phase 3





Phase 3



Phase 3



Phase 3

Phase I
TYPE A



2+1 Penthouse Apts with Private Pool
3+1 Garden Apts with Private

Phase I
TYPE A



2+1 Penthouse + Private
Pool

Phase I
TYPE A



Phase I
TYPE A



2 Bed Penthouse 82
m²
* 13 m² Terrace Pool
* 94 m² Roof Terrace
* 211 m² Total usage
area



2+1 Penthouse + Private Pool

A type Floor plan



Starting from
344,995
GBP

- * 2 Bed Penthouse 82 m²
- * 13 m² Terrace
- * 13 m² Private Pool
- * 94 m² Roof Terrace
- * 211 m² Total usage area

Asian Fusion Cuisine

Cuisine





ON SITE
SITE

MARKET

MARKET

ПРОДУКТОВЫЙ
МАГАЗИН

GROCERY
STORE

Детская

площадка

CHILDREN'S
AREA

Аптека

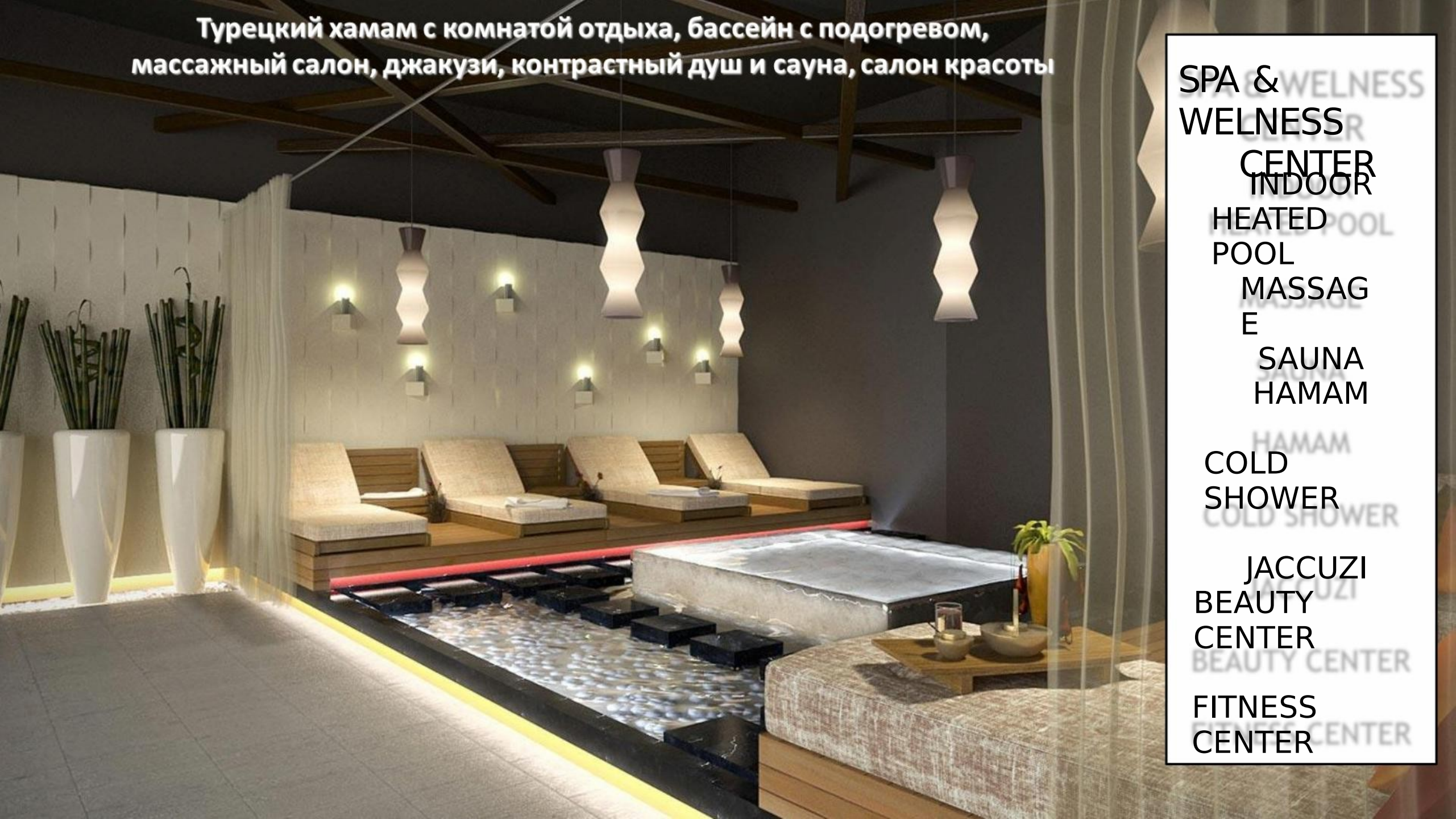
PHARMACY

Обменный

пункт

EXCHANGE OFFICE

Турецкий хамам с комнатой отдыха, бассейн с подогревом, массажный салон, джакузи, контрастный душ и сауна, салон красоты



SPA & WELNESS
WELNESS
CENTER
INDOOR
HEATED
POOL
MASSAG
E
SAUNA
HAMAM
HAMAM
COLD
SHOWER
COLD SHOWER
JACCUZI
BEAUTY
CENTER
BEAUTY CENTER
FITNESS
CENTER
FITNESS CENTER

On-Site Children's Activities



OUTDOOR PLAYGROUND

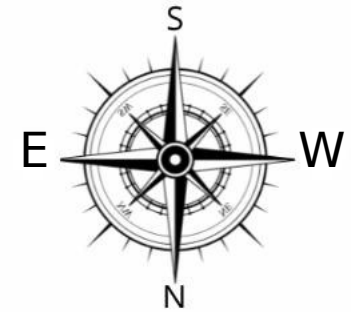


INDOOR PLAYGROUND

PHASE 1

Availability

Map

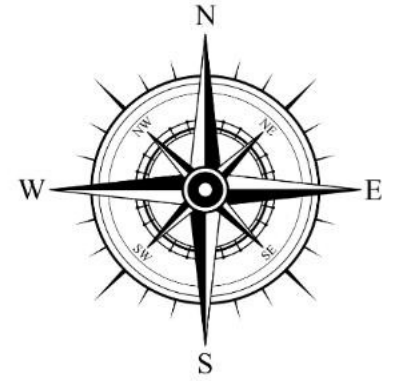


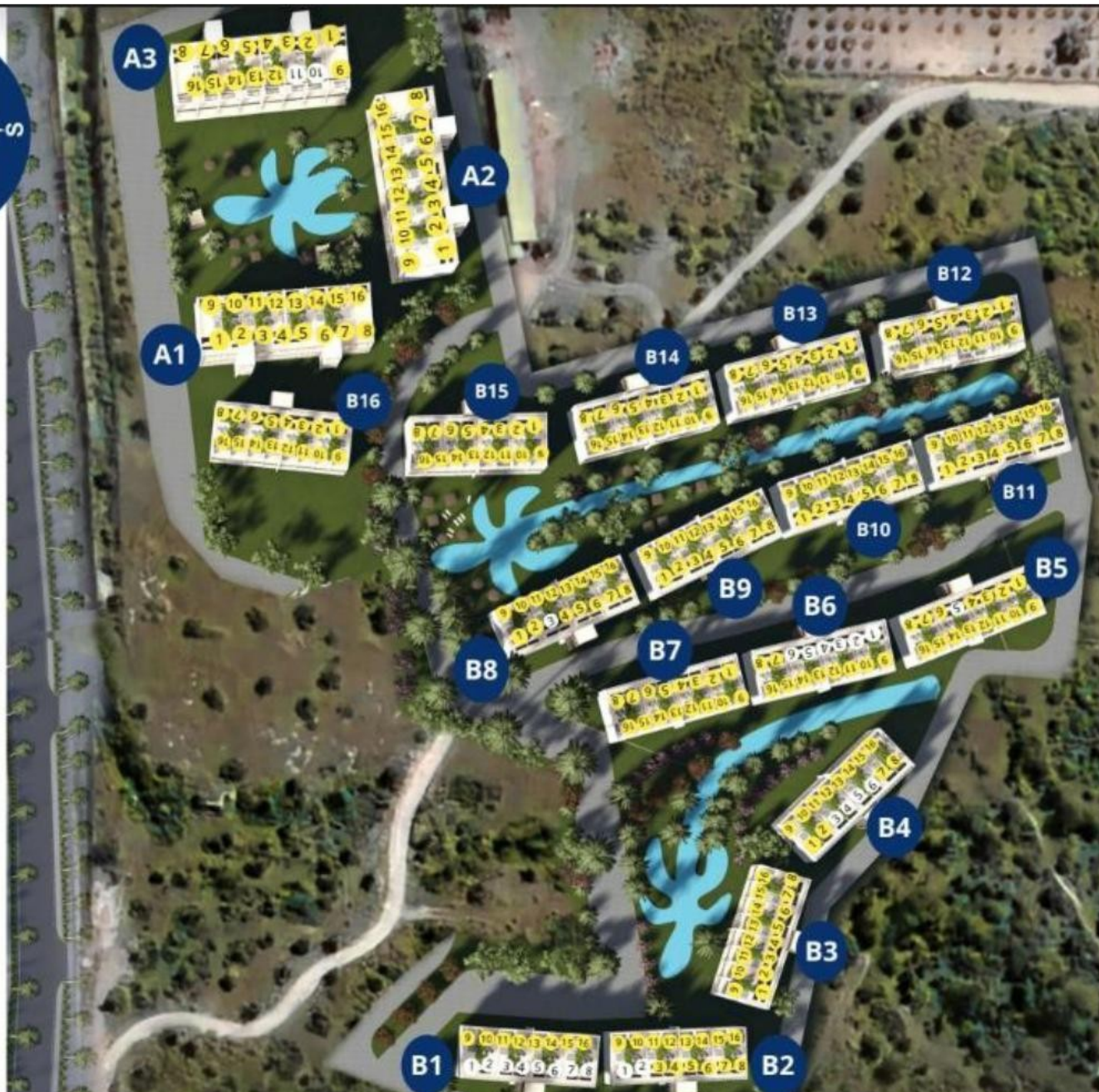
PHASE 2

Availability Map



18.02.2023 -
1





**BAHAMAS
HOMES**

AVAILABILITY MAP

06.03.2023

A BLOCKS - ONE BEDROOM GARDEN APARTMENTS & TWO BEDROOM LOFT PENTHOUSE APARTMENTS

B BLOCKS - STUDIO GARDEN APARTMENTS & STUDIO PENTHOUSE APARTMENTS

#1 - #8 GARDEN APARTMENTS

#9 - #16 PENTHOUSE APARTMENTS



AVAILABLE



RESERVED

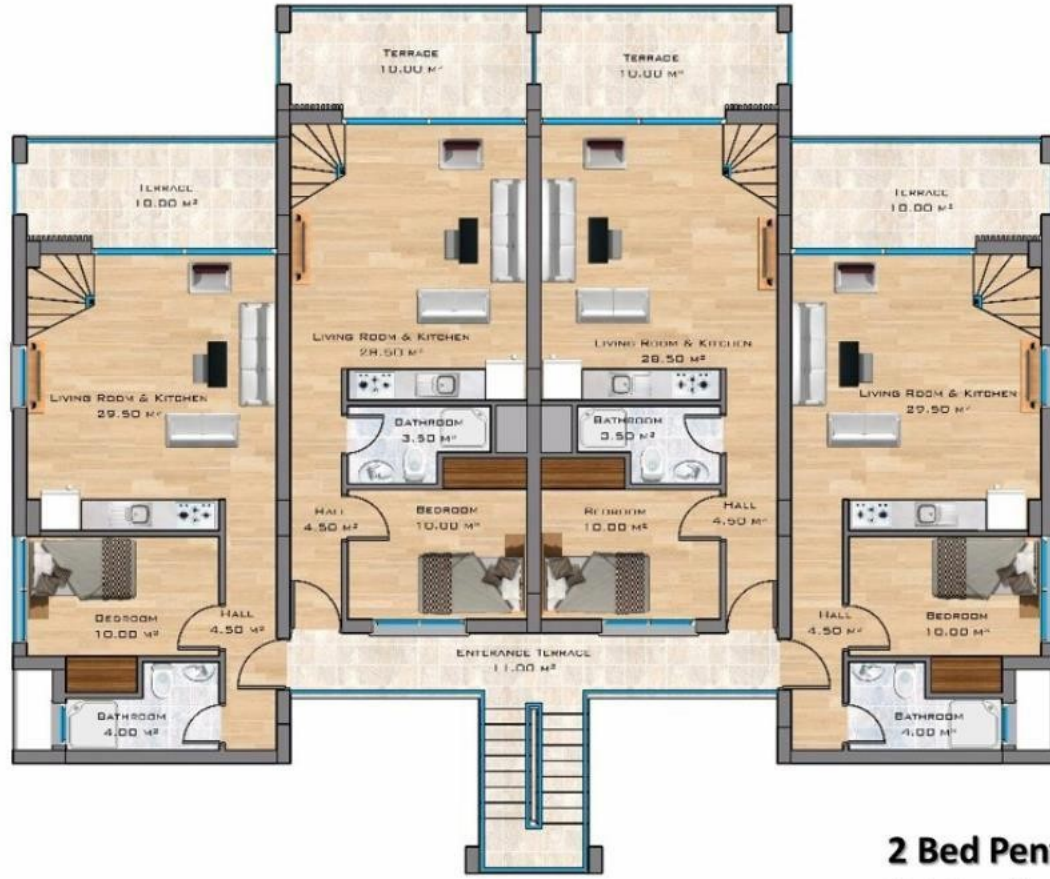




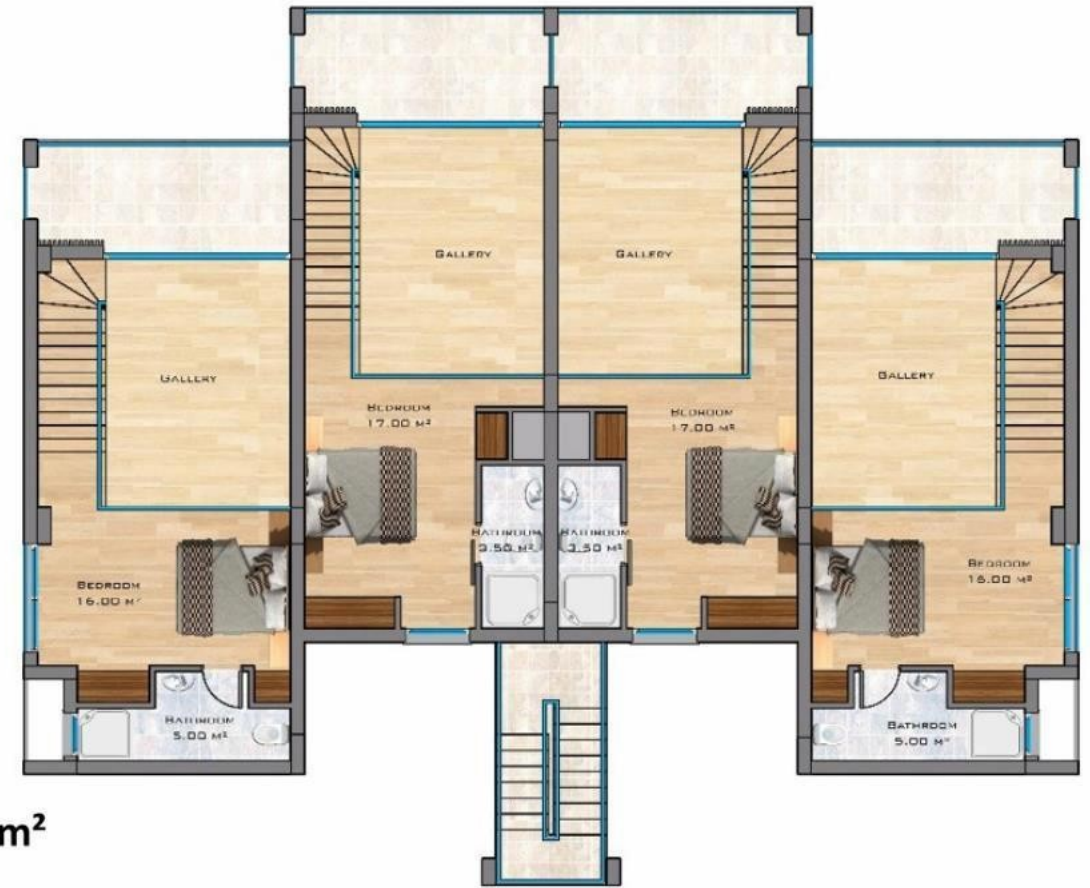
1st Floor

A block Floor plan

TWO BEDROOM LOFT



1ST FLOOR PLAN

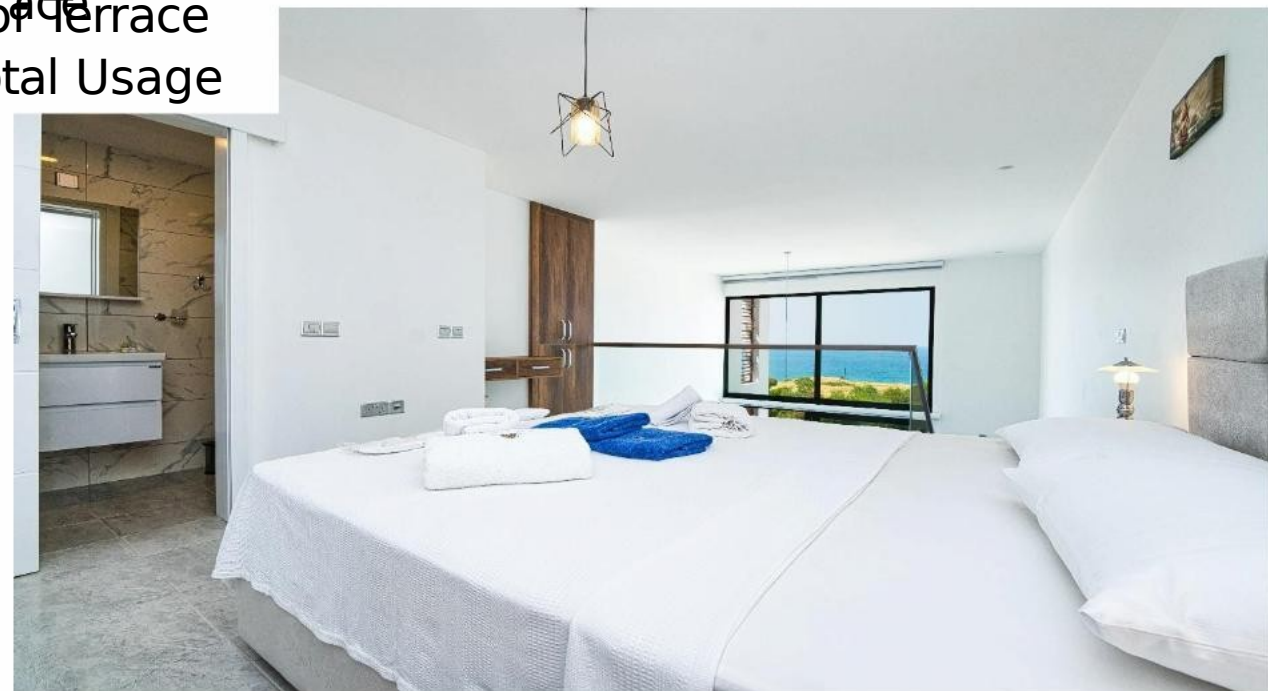


MEZZANINE FLOOR PLAN

- 2 Bed Penthouse 75 m²**
- * 10 m² terrace**
- * 50 m² Roof Terrace**
- * 135 m² total usage area**



* 2+1 Penthouse 75 m²
* 10 m² Terrace
* 10 m² Roof Terrace
* 135 m² Total Usage Area



MAINTENANCE SERVICES

- ✓ Swimming Pool Maintenance
 - ✓ Gardening
 - ✓ Maintenance of Cleaning of the site
 - ✓ Leisure centre & all outdoor amenities usage
 - ✓ Beach & Beach Facilities
 - ✓ Stand-by generator system
 - ✓ 24/7 Management Services
 - ✓ CCTV Security Camera System on site
 - ✓ Shuttle Service to Korenium Golf and Supermarket
- Maintenance Fees :
- ▶ Bahamas Phase 1 = £120 per month + £30 with pool option
 - ▶ Bahamas Phase 2 = £60 per month
 - ▶ Bahamas Phase 3 = £70 per month





BAHAMAS
HOMES

PAYMENT PLAN

2,000 GBP - TWO WEEKS RESERVATION

5,000 GBP - ONE MONTH RESERVATION

35% DOWN PAYMENT

REMAINING 65% PAYABLE

MONTHLY - BIMONTHLY - QUARTERLY

BAHAMAS 1 & 2 : KEY HANDOVER DECEMBER 2025

BAHAMAS 3 : KEY HANDOVER JUNE 2026

3,000 GBP ELECTRIC AND CLEAN WATER FEE

+

5% VAT WILL BE ADDED ON TOP OF THE SALES PRICE AND THEN DIVIDED INTO EACH PAYMENT



HAWAII

HOMES













Ground floor

A block Floor plan

PHASE 2

ONE BEDROOM APARTMENT



1 Bedroom APT. 50 m²

*** 10 m² terrace**

*** 60 m² total usage area**

Living / Dining and Kitchen Area: 20.4 m²

Bedroom Area: 14.6 m²

Wc and Shower Area: 5.8 m²

Hall Area: 9 m²

Terrace Area: 11.3 m²

Entrance Terrace Area: 6.1 m²

Total: 67.2 m²



* 1+1 Garden floor
50 m²
* 10 m² Terrace
* 60 m² Total Usage
Area















- Living / Dining and Kitchen Area: 54 m2
- Bedroom 1 Area: 16.3 m2
- Bedroom 1 Wc and Shower Area: 5.4 m2
- Bedroom 2 Area: 16.3 m2
- Bedroom 2 Wc and Shower Area: 4 m2
- Master Bedroom 3 Area: 21.5 m2
- Master Bedroom 3 Wc and Shower Area: 6 m2
- Guest Wc Area: 4 m2
- Entrance and Hall Areas: 17.5 m2
- Total Interior Area: 145 m2

- Sea Terrace Area: 23.7 m2
- Side Terraces Area: 53.1 m2
- Total Closed Area: 221.8 m2
- + Roof Terrace Area (min): 145 m2



HAWAII HOMES

490 UNITS

MARCH 4,
2023





HAWAII
HOMES

Hawaii Facilities

**INDOOR HEATED
POOL**



**SPA (SAUNA,
MASSAGE, HAMAM)**



GYM

TENNIS COURT



MAINTENANCE SERVICES

- ✓ Swimming Pool Maintenance
- ✓ Gardening Maintenance
- ✓ Cleaning of the site
- ✓ Leisure centre & all outdoor amenities usage
- ✓ Beach & Beach Facilities
- ✓ Stand-by generator system
- ✓ 24/7 Management Services
- ✓ CCTV Security Camera System on site
- ✓ Shuttle Service to Korenium Golf and Supermarket

Maintenance

Fees :

- ▶ Hawaii Homes = £70 for all apartments - £170 for Villas. (Per Month)





PAYMENT PLAN

2,000 GBP - TWO WEEKS RESERVATION

35% DOWN PAYMENT

REMAINING 65% PAYABLE
MONTHLY - BIMONTHLY - QUARTERLY

UNTIL KEY HANDOVER END OF 2025

3,000 GBP ELECTRIC AND CLEAN WATER FEE

+

5% VAT WILL BE ADDED ON TOP OF THE SALES PRICE AND THEN DIVIDED INTO EACH PAYMENT



BABYLON

BEACH RESORT HOMES

BABYLON BEACH RESORT HOMES

© 2022 Google



HAWAII

KIBRIS
BAHCELER

Özlem UÇAR

DAVLOS MARKET 2

Google

BABYLON BEACH RESORT HOMES



BABYLON BEACH RESORT HOMES



BABYLON BEACH RESORT HOMES

PHASE
1



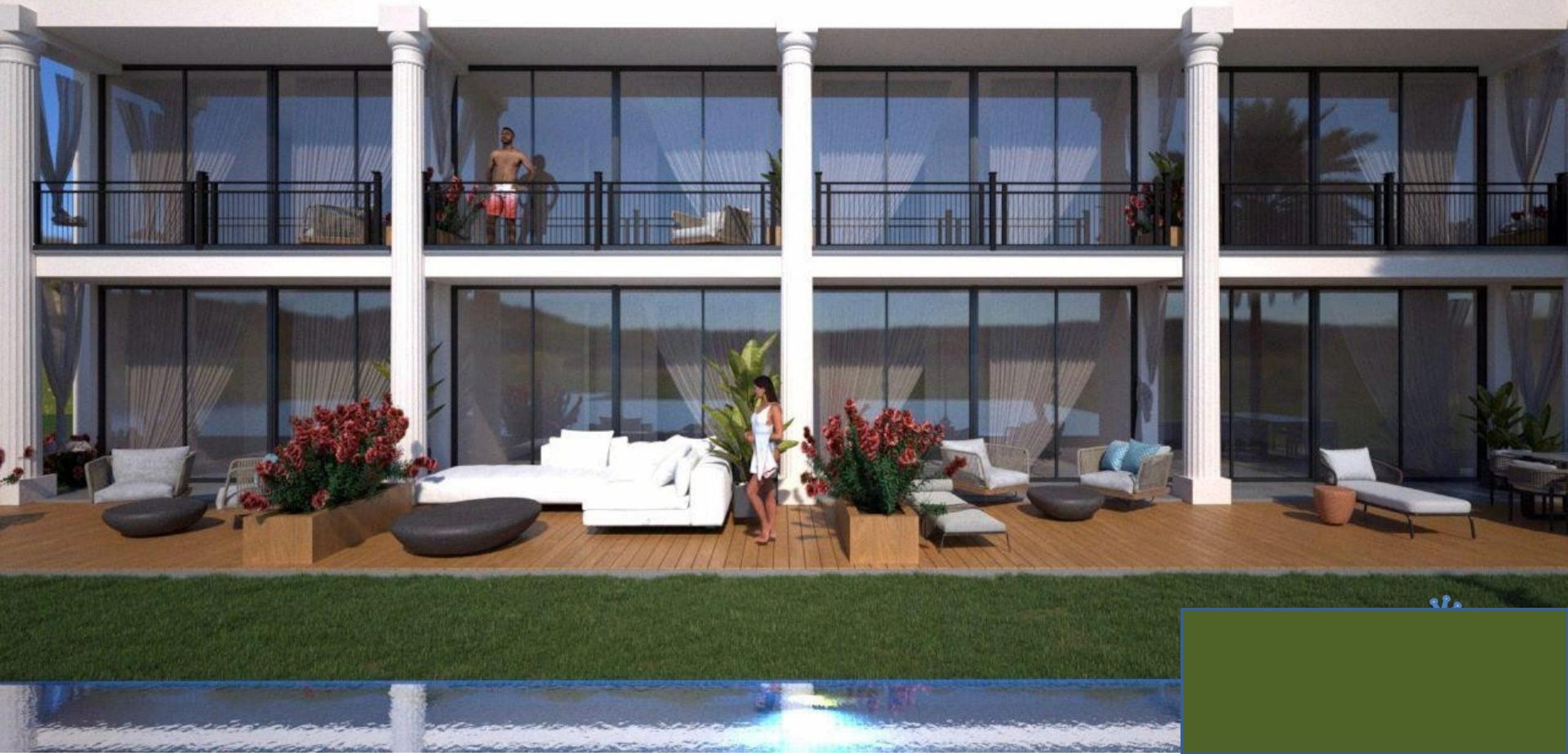
BABYLON BEACH RESORT HOMES

PHASE
1



BABYLON BEACH RESORT HOMES

PHASE
1



PHASE
2

BABYLON BEACH RESORT
HOMES



BABYLON BEACH RESORT HOMES

PHASE
2





BABYLON
BEACH RESORT HOMES

1+1 Floor Plan

GROSS AREA
43m²

CLOSE AREA
35m²

DETAILS

KITCHEN &
LIVINGROOM : 16m²

BEDROOM : 10m²

BATHROOM : 5m²

TERRACE : 8m²



2+1 Floor Plan

GROSS AREA
86m²

CLOSE AREA
70m²

DETAILS

KITCHEN &
LIVINGROOM : 31.5m²

BEDROOM-1 : 9m²

BEDROOM-2 : 12.5m²

BATHROOM : 5m²

WC : 3.5m²

TERRACE : 16m²



BABYLON
BEACH RESORT HOMES



3+1 Floor Plan

DETAILS

GROSS AREA
129m²

CLOSE AREA
105m²

HALL: 12m²

KITCHEN &
LIVINGROOM : 32m²

BEDROOM-1 : 13m²

WC-1 : 4m²

BATHROOM: 5m²

BEDROOM-2 : 10m²

BEDROOM-3 : 13m²

WC-3 : 4m²

CLOSET: 5m²

TERRACE : 24m²



BABYLON
BEACH RESORT HOMES



4+1 Floor Plan

DETAILS

GROSS AREA
129m²

CLOSE AREA
105m²

HALL: 12m²

KITCHEN &
LIVINGROOM : 32m²

BEDROOM-1 : 9.5m²

BEDROOM-2 : 8.5m²

BATHROOM: 5m²

BEDROOM-3 : 9m²

BEDROOM-4 : 13m²

WC-3 : 4m²

CLOSET: 5m²

TERRACE : 24m²

BABYLON BEACH RESORT HOMES

PHASE
2



BABYLON BEACH RESORT HOMES

PHASE
2



BABYLON BEACH RESORT HOMES

PHASE
2



BABYLON BEACH RESORT HOMES

PHASE 2



BABYLON
BEACH RESORT HOMES

BABYLON TWO BEDROOM BUNGALOW

PHASE 2
PHASE 2



BABYLON
BEACH RESORT HOMES

2+
1

- 70M² INTERIOR GROSS AREA
- 36M² TERRACE
- 106M² TOTAL AGE USAGE



BABYLON THREE BEDROOM BUNGALOW

PHASE 2



BABYLON
BEACH RESORT HOMES

3+
1

- 97M² INTERIOR GROSS AREA
- 37M² TERRACE
- 134M² TOTAL USAGE



BABYLON BEACH RESORT HOMES

PHASE
1



BABYLON BEACH RESORT HOMES

PHASE
1



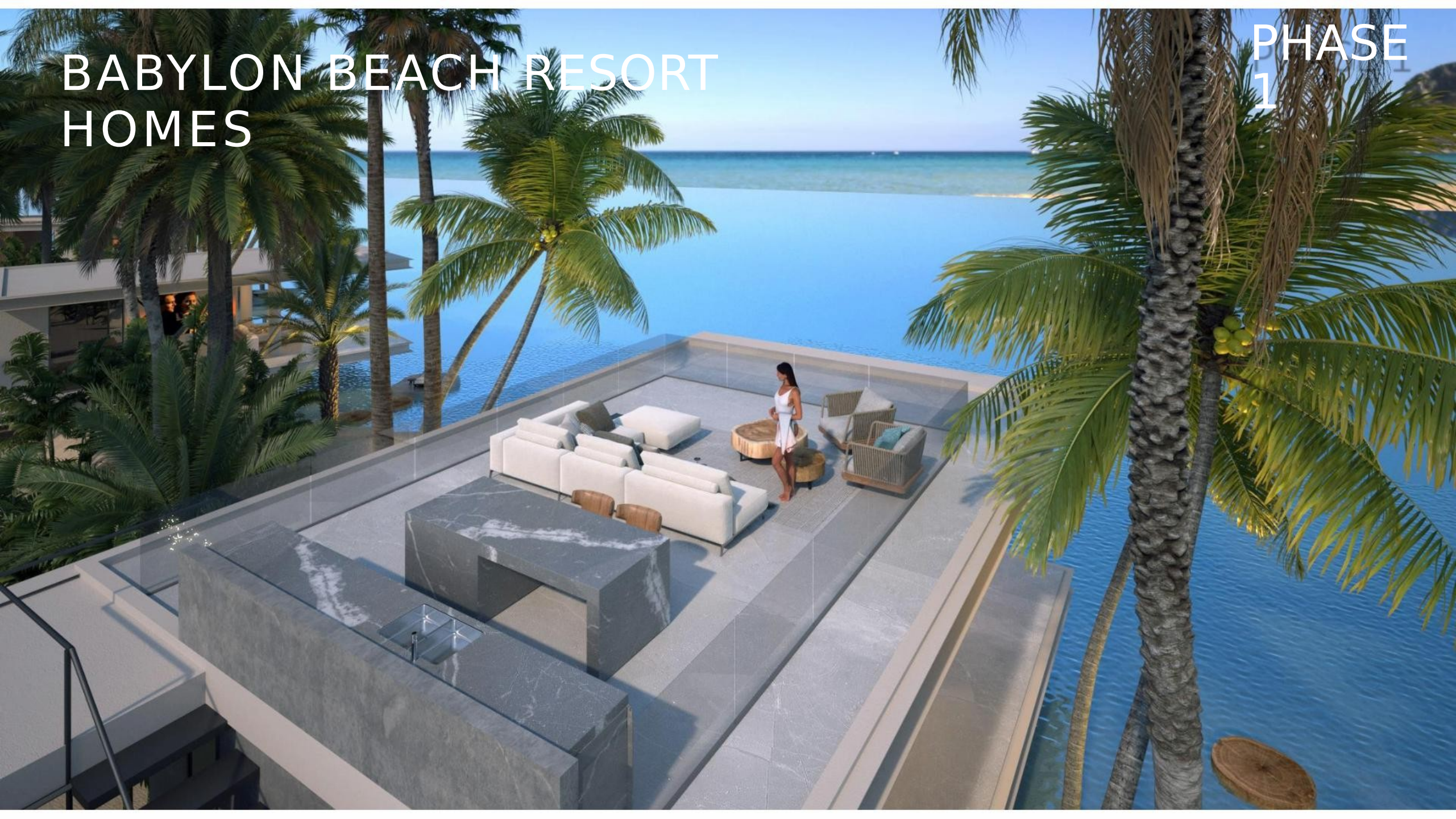
BABYLON BEACH RESORT HOMES

PHASE
1



BABYLON BEACH RESORT HOMES

PHASE
1





- Living / Dining and Kitchen Area: 54 m2
- Bedroom 1 Area: 16.3 m2
- Bedroom 1 Wc and Shower Area: 5.4 m2
- Bedroom 2 Area: 16.3 m2
- Bedroom 2 Wc and Shower Area: 4 m2
- Master Bedroom 3 Area: 21.5 m2
- Master Bedroom 3 Wc and Shower Area: 6 m2
- Guest Wc Area: 4 m2
- Entrance and Hall Areas: 17.5 m2
- Total Interior Area: 145 m2

- Sea Terrace Area: 23.7 m2
- Side Terraces Area: 53.1 m2
- Total Closed Area: 221.8 m2
- + Roof Terrace Area (min): 145 m2

BABYLON BEACH RESORT HOMES

BABYLON BEACH RESORT HOMES

PHASE
1



BABYLON BEACH RESORT HOMES

PHASE
1



BABYLON FIVE BEDROOM VILLA

PHASE 1





BABYLON BEACH RESORT HOMES

LUXURY SPECIFICATIONS

READY TO MOVE:

- MODERN FURNITURE
- MODERN KITCHEN FITTINGS
- KITCHEN APPLIANCES
- HIGH-END BATHROOM FITTINGS
- AIR CONDITIONING
- KEY CARD SYSTEM



HIGH-END SPECIFICATIONS

- ✓ TOP QUALITY LACQUERED PAINTED FITTED KITCHEN & WARDROBES
- ✓ HIGH QUALITY DESIGNER INTERNAL DOORS & CONTEMPORARY ENTRANCE DOOR
- ✓ MARBLE STAIRCASE & NATURAL STONE COVERED WALLS & PORCELAIN TILES
- ✓ INVERTER AIR CONDITIONING SYSTEM FOR ALL ROOMS
- ✓ HIGH-END BATHROOM FITTINGS
- ✓ UNDERFLOOR HEATING INFRASTRUCTURE FOR HEAT PUMP SYSTEM (ONLY FOR VILLAS)
- ✓ FULL HEIGHT SUSPENDED CEILING WITH LED SPOT & STRIP LIGHTS
- ✓ COMFORT GLASS & DOUBLE GLAZED HIGH QUALITY ALUMINUM SLIDING DOORS
- ✓ ABB POWER PRODUCTS

FRANKE

KUTAHYA
PORSELEN

 **MITSUBISHI
HEAVY INDUSTRIES**

  **BOSCH**

 **GEBERIT**

 **DURAVIT**

hansgrohe

ABB

Power and productivity
for a better world™



Babylon Facilities + Features

**INDOOR HEATED
POOL**



**SPA (SAUNA,
MASSAGE, HAMAM)**



GYM



TENNIS COURT



RESTAURANT

RECEPTION

**BEACH AND BEACH
CINEMA**

**SWIMMING POOLS
WITH WATER AND
LIGHT SHOWS**

MAINTENANCE SERVICES

- ✓ Swimming Pool Maintenance
- ✓ Gardening Maintenance
- ✓ Cleaning of the site
- ✓ Leisure centre & all outdoor amenities usage
- ✓ Beach & Beach Facilities
- ✓ Stand-by generator system
- ✓ 24/7 Management Services
- ✓ CCTV Security Camera System on site
- ✓ Shuttle Service to Golf and Supermarket (Free)

Maintenance

Fees:

- ▶ BABYLON RESORT HOMES => £150 per month for apartments
- £200 per month for Villas and Bungalows



PAYMENT PLAN

2,000 GBP - TWO WEEKS RESERVATION

5,000 GBP - ONE MONTH RESERVATION

35% DOWN PAYMENT

REMAINING 65% PAYABLE STARTING JANUARY 2024

MONTHLY - BIMONTHLY - QUARTERLY

UNTIL KEY HANDOVER DECEMBER 2026

3,000 GBP ELECTRIC AND CLEAN WATER FEE

+

5% VAT WILL BE ADDED ON TOP OF THE SALES PRICE AND THEN DIVIDED INTO EACH PAYMENT



BABYLON
BEACH RESORT HOMES

MARCH 4th 2023



BABYLON BEACH RESORT - PHASE 1

V TYPE: 3+1 LUXURY VILLA
C TYPE: 5+1 LUXURY VILLA
A&B TYPE: 1+1 APARTMENTS



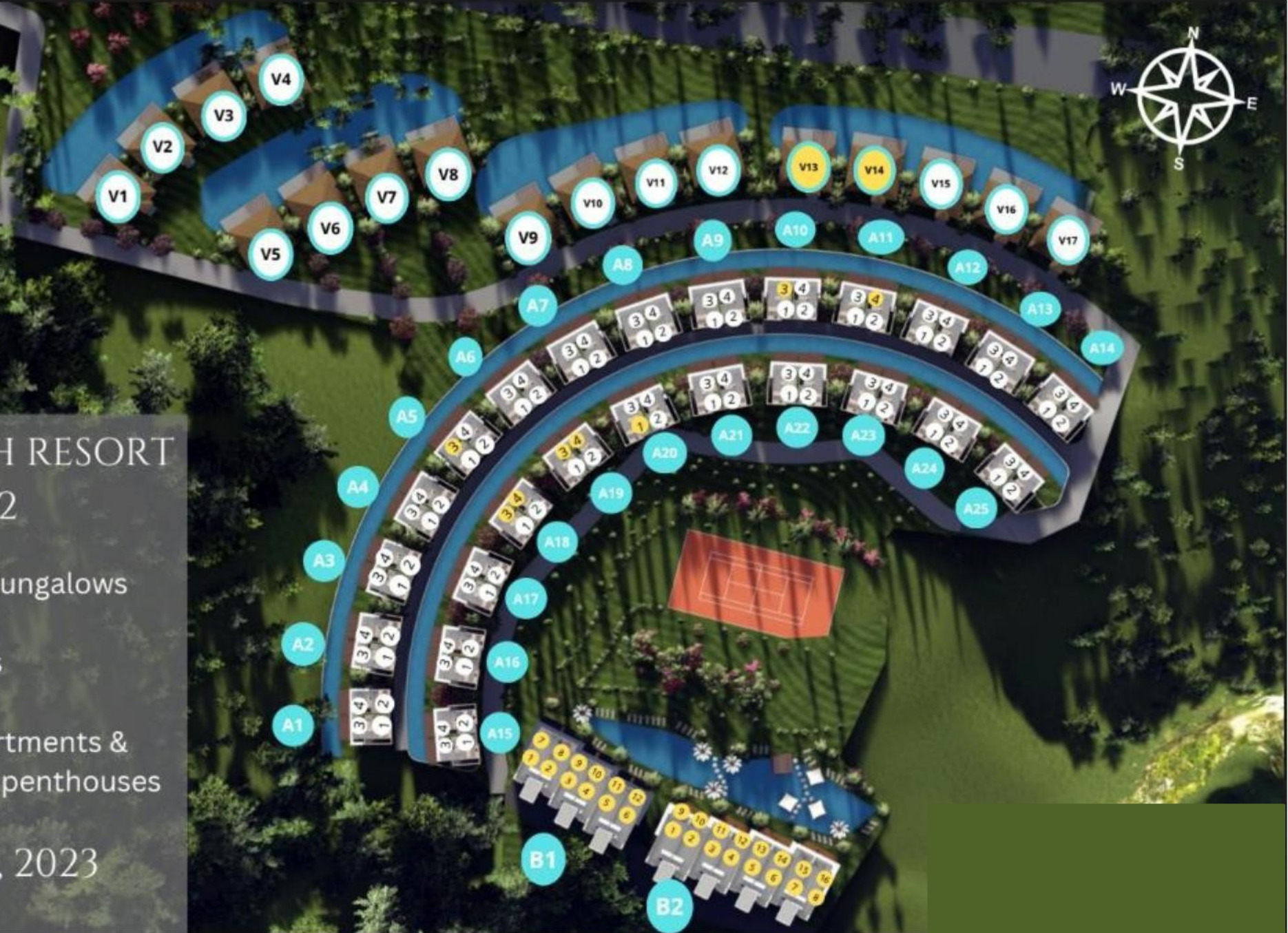
BABYLON BEACH RESORT PHASE 2

V type: 2&3 Bedroom Bungalows

A type: 1+1 Apartments

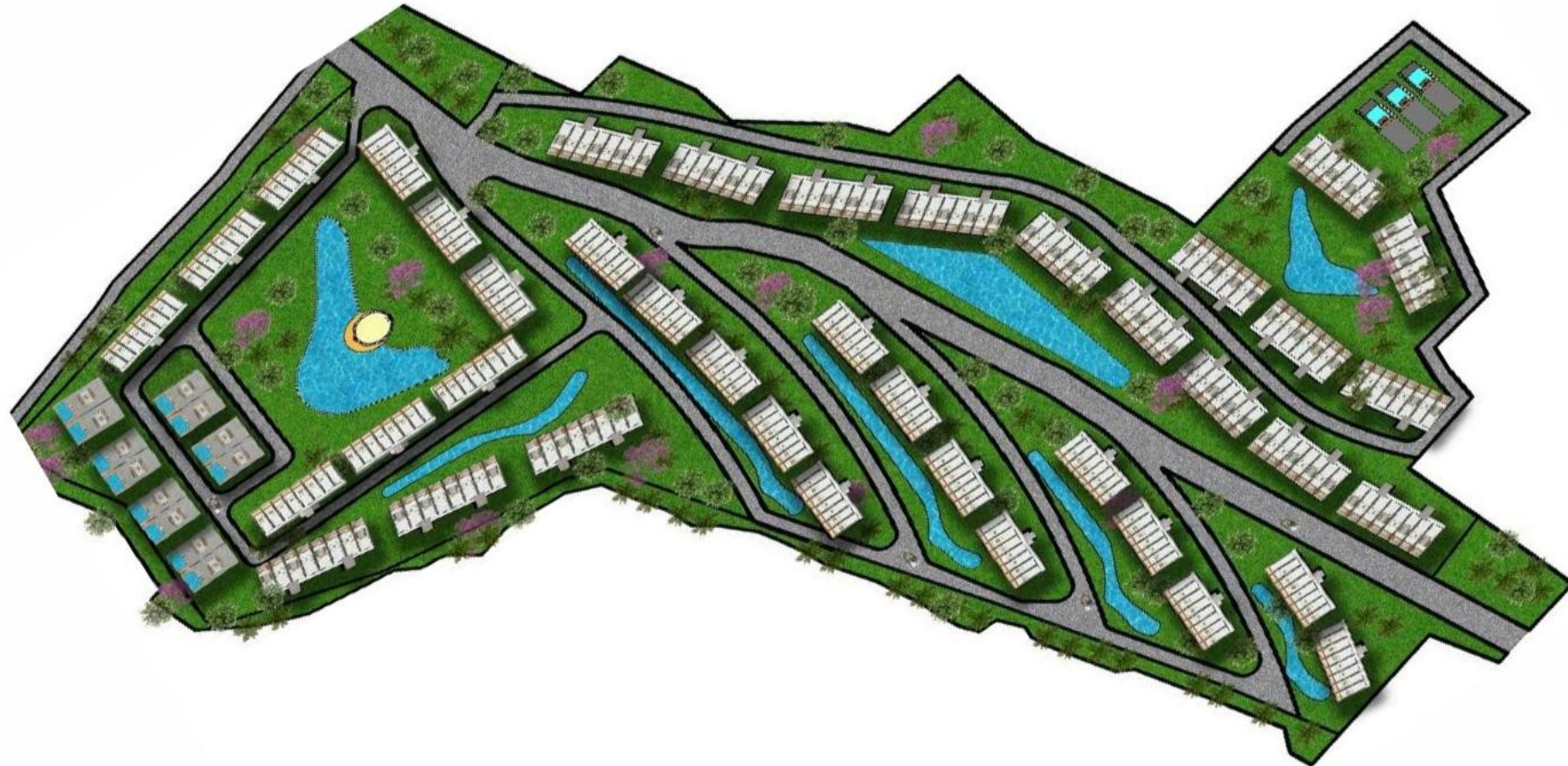
B type: 1+1 garden apartments &
2 Bedroom loft penthouses

MARCH 4TH, 2023

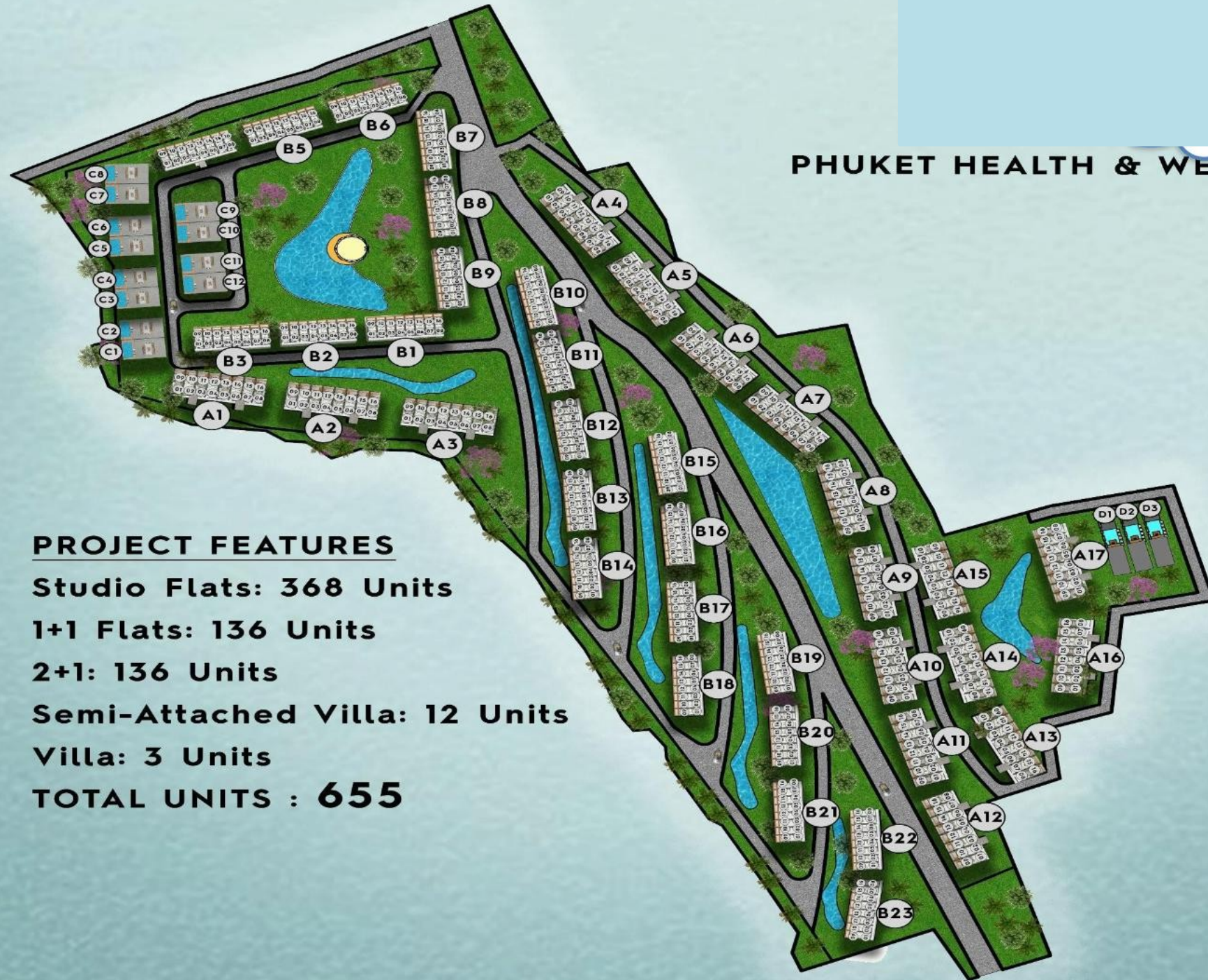


NEW RELEASE!

PHUKET HEALTH AND WELLNESS RESORT



PHUKET HEALTH & WELLNESS RESORT



PROJECT FEATURES

Studio Flats: 368 Units

1+1 Flats: 136 Units

2+1: 136 Units

Semi-Attached Villa: 12 Units

Villa: 3 Units

TOTAL UNITS : 655





Studio Floor plan



GARDEN STUDIO 35M2

- 8M2 TERRACE
- 43M2 TOTAL USAGE AREA

Starting From - 104,500 GBP



PENTHOUSE STUDIO 35M2

- 8M2 TERRACE
- 35M2 ROOF TERRACE
- 78M2 TOTAL USAGE AREA

Starting From - 115,500 GBP



* 1+1 Garden floor
50 m²
* 10 m² Terrace
* 60 m² Total Usage
Area



Ground floor

A block Floor plan

PHASE 2

ONE BEDROOM APARTMENT



132,000
GBP

1 Bedroom APT. 50 m²
*** 10 m² terrace**
*** 60 m² total usage area**

Living / Dining and Kitchen Area: 20.4 m²
Bedroom Area: 14.6 m²
Wc and Shower Area: 5.8 m²
Hall Area: 9 m²
Terrace Area: 11.3 m²
Entrance Terrace Area: 6.1 m²
Total: 67.2 m²



* 2+1 Penthouse 75 m²
* 10 m² Terrace
* 50 m² Roof Terrace
* 135 m² Total Usage Area

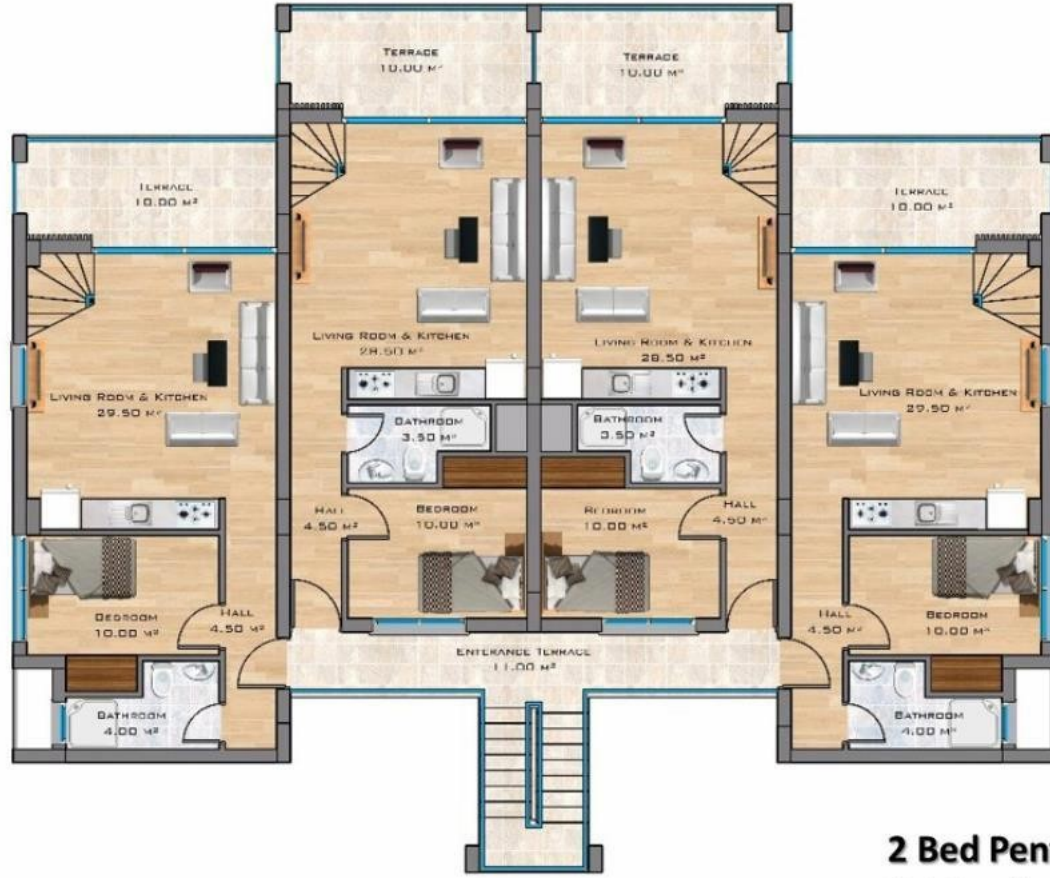


1st Floor

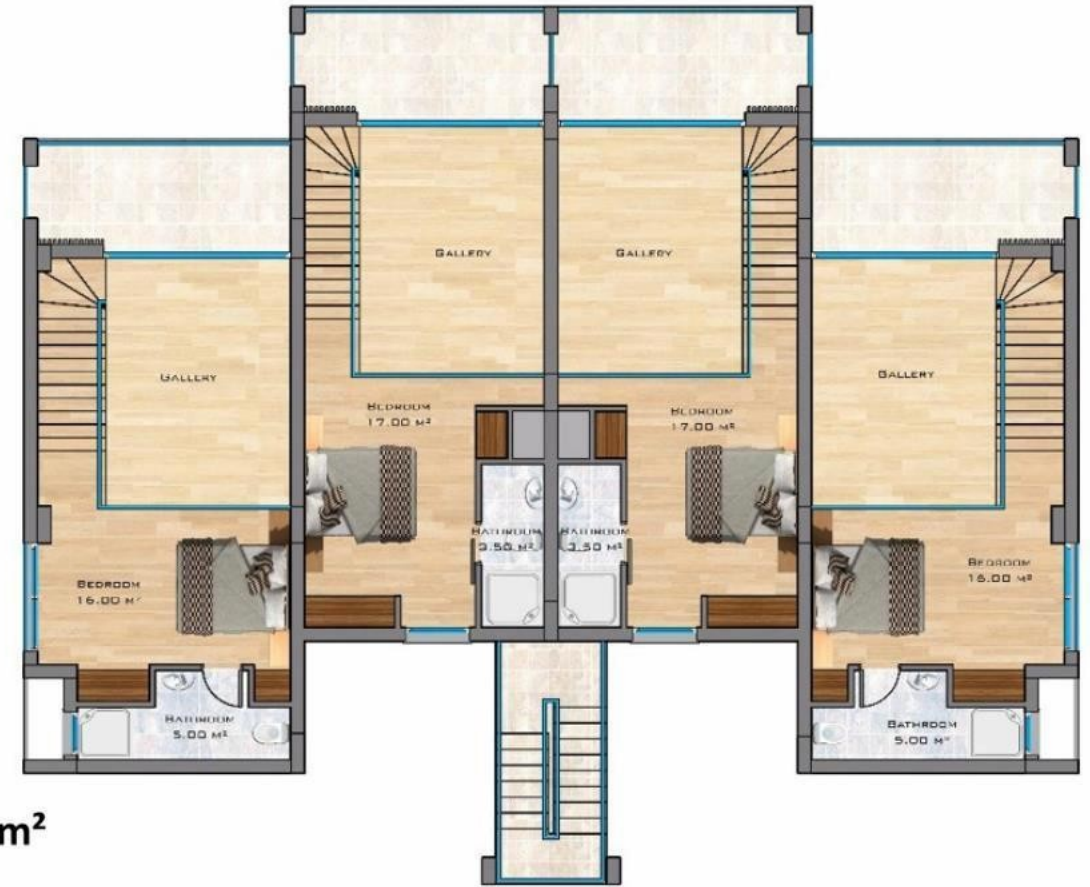
A block Floor plan

PHASE 2

TWO BEDROOM LOFT



1ST FLOOR PLAN



MEZZANINE FLOOR PLAN

- 2 Bed Penthouse 75 m²**
- * 10 m² terrace**
- * 50 m² Roof Terrace**
- * 135 m² total usage area**

236,500
GBP

PHUKET HEALTH & WELLNESS RESORT

March 7th, 2023 9.30AM



A TYPE

1+1 GROUND FLOOR
2+1 LOFT PENTHOUSE

B TYPE

STUDIO, 1+1, 2+1, 3+1,
4+1 OPTIONAL

C TYPE

SEMI-ATTACHED VILLAS

- Gym
- Hamam
- Sauna
- Massage
- Indoor Pool
- Tennis court
- Beauty Center
- Restaurant
- Walking paths
- Cycling routes
- Hiking routes
- Dentist
- Healing/yoga
- Clinics

PAYMENT PLAN

PHUKET HEALTH AND WELLNESS RESORT

2,000 GBP - TWO WEEKS RESERVATION

5,000 GBP - ONE MONTH RESERVATION

35% DOWN PAYMENT

REMAINING 65% PAYABLE STARTING MARCH 2024

MONTHLY - BIMONTHLY - QUARTERLY

UNTIL KEY HANDOVER MARCH 2027

3,000 GBP ELECTRIC AND CLEAN WATER FEE

+

5% VAT WILL BE ADDED ON TOP OF THE SALES PRICE AND THEN DIVIDED INTO EACH PAYMENT

Taxes & Costs

- **Stamp Duty: 0.5%** of the sale price. Payable within 21 days of signing your contract.
- **V.A.T (K.D.V):** Payable only on new properties, **5%** of the contract price, payable with every instalment.
- **Title Transfer Tax: 6%** of the sales price for first property purchase. Payable at the time of the title transfer, after key handover, into the name of the purchaser.

- **Lawyer fee:** for processing your entire purchase. **£1750.**
- **Electric and clean water connection: £3,000 added on top of sales price.**
- **Maintenance Fee:** Monthly fee for site services & amenities, depending on project and unit: **£60 - £200**
- **Contingency fee:** used to carry out any remedial works and/or major repairs and/or improvements and/or periodic maintenance works required: **£200 per year**

THROUGH OUT THE BUYING PROCESS YOUR SOLICITOR
WILL SUPPORT YOU AND COMPLETE THE PURCHASE ON
YOUR BEHALF

MANAGEMENT SERVICE



House-keeping Service

Уборка



Airport Transfers

Трансфер из
аэропорта
и в аэропорт



Car Rental Service

Аренда
автомобилей



Checking the Apartment

Проверка
апартаментов



Free Shuttle Service



Paying Bills

Помощь в оплате
счетов



Laundry Service

Услуги
прачечной



Personal Shopping Service

Персональный
шоппинг



Repair Works

Ремонтные
работы



Bike Club

Велоаренд



ATV Tours

Сафари на
квадроциклах



Rental Management

Управление

Rental Management

✓ Advertising and search for clients in International Hotel Runner System

Поиск Клиентов для аренды на международных сайтах онлайн-бронирования

✓ Providing to rental guests with towels, linen

Предоставление арендаторам полотенец, халатов, постельное белье и т.д.

✓ Key Holding - хранение ключей

✓ Check-in and Check-Out - Заезд и выезд гостей

✓ Taking Deposit - Взимание депозита на случай

ущербов

✓ Creates Inventory List, calculation of Cleaning Before and After - Создание списка инвентаризации, калькуляция



OSTROVOK.RU

Booking.com



REAL EXAMPLES FROM OUR PROJECTS

Capital Gains

- 🎯 IN **MALDIVES** PHASE 1, AN OFF-PLAN TWO BEDROOM PENTHOUSE WAS LISTED FOR **150,000 GBP**, ON COMPLETION THE SAME UNIT SOLD FOR **425,000 GBP**.
- 🎯 IN **MALDIVES** PHASE 1, AN OFF-PLAN THREE BEDROOM PRIVATE VILLA WAS LISTED FOR **375,000 GBP**, AFTER COMPLETION THE SAME UNIT SOLD FOR **950,000 GBP**.
- 🎯 IN **MYKONOS** HOMES AN OFF-PLAN 3 BEDROOM LOFT SOLD FOR **175,000 GBP**, STILL UNDER CONSTRUCTION THE SAME UNIT SELLS FOR **350,000 GBP**.
- 🎯 IN OUR **IDYLL** PROJECT AN OFF-PLAN TWO BEDROOM PENTHOUSE WAS LISTED FOR **75,000 GBP** AND THE SAME UNIT SOLD FOR **225,000 GBP** BEFORE COMPLETION.
- 🎯 IN OUR **PEARL ISLAND HOMES** PROJECT AN OFF-PLAN GARDEN STUDIO WAS LISTED FOR **39,995 GBP** AND THE SAME STUDIO WAS LATER SOLD FOR **115,000 GBP** STILL UNDER CONSTRUCTION



Thank you