

A nighttime photograph of the Seattle skyline, featuring the Space Needle and a Ferris wheel, with city lights reflecting on the water. The image is overlaid with a dark blue gradient.

STATUS HOUSE

2025



STATUS HOUSE

This innovative development is the first in the area specially designed for permanent living and long-term rental opportunities, offering an unparalleled combination of modern comfort and exceptional investment potential.

With prices starting at just \$1,000 per m², STATUS HOUSE offers up to 40 months of interest-free internal installments and flexible, personalized payment plans.



STATUS HOUSE

Outstanding Features:

- Comprehensive management and rental services.
- 24/7 lobby and concierge support for ultimate convenience.
- Modern sports facilities, including tennis and volleyball courts.
- Dedicated children's play zones, creating a welcoming, family-friendly environment.

As a STATUS HOUSE property owner, you'll also enjoy privileged access to the premium services and infrastructure

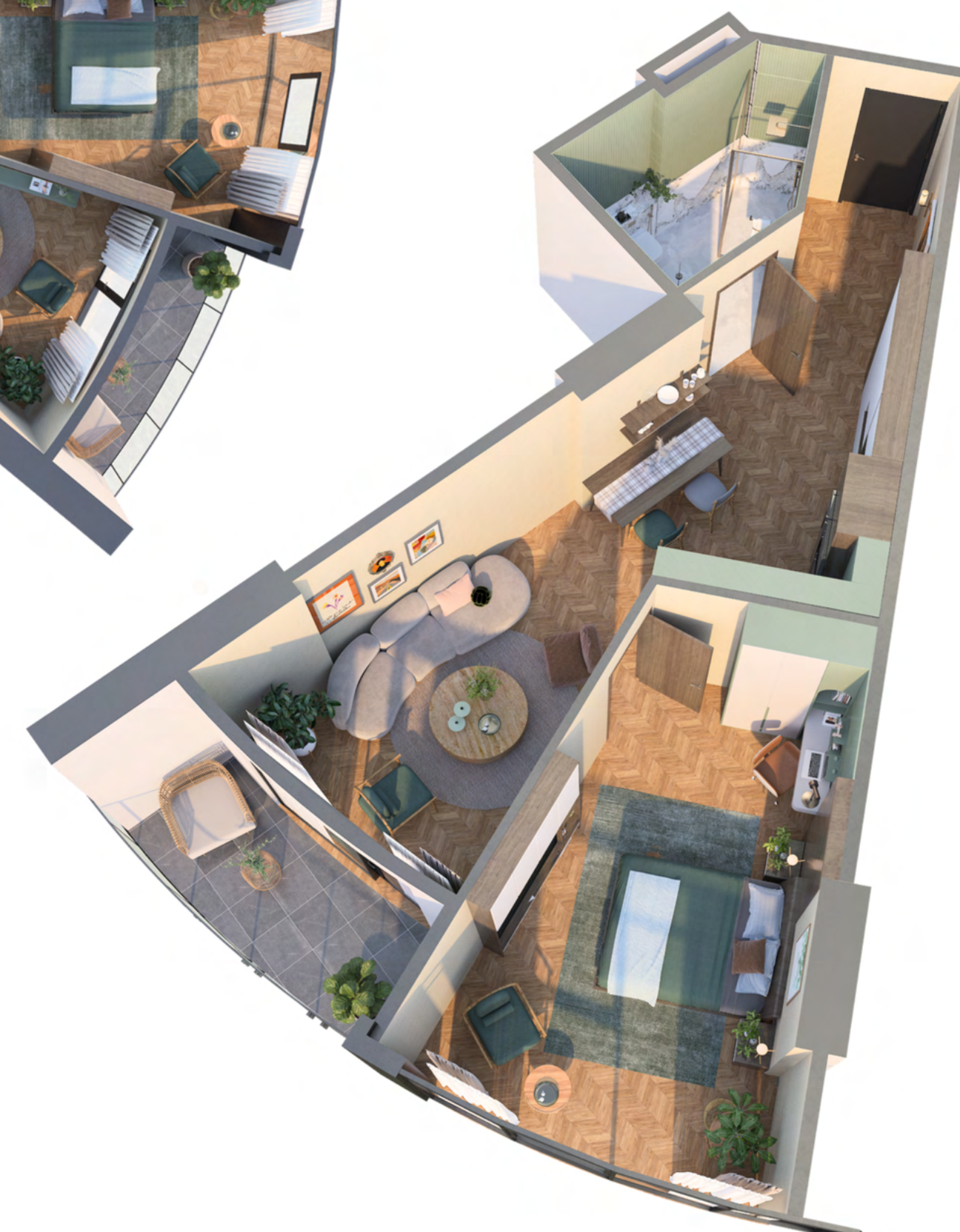
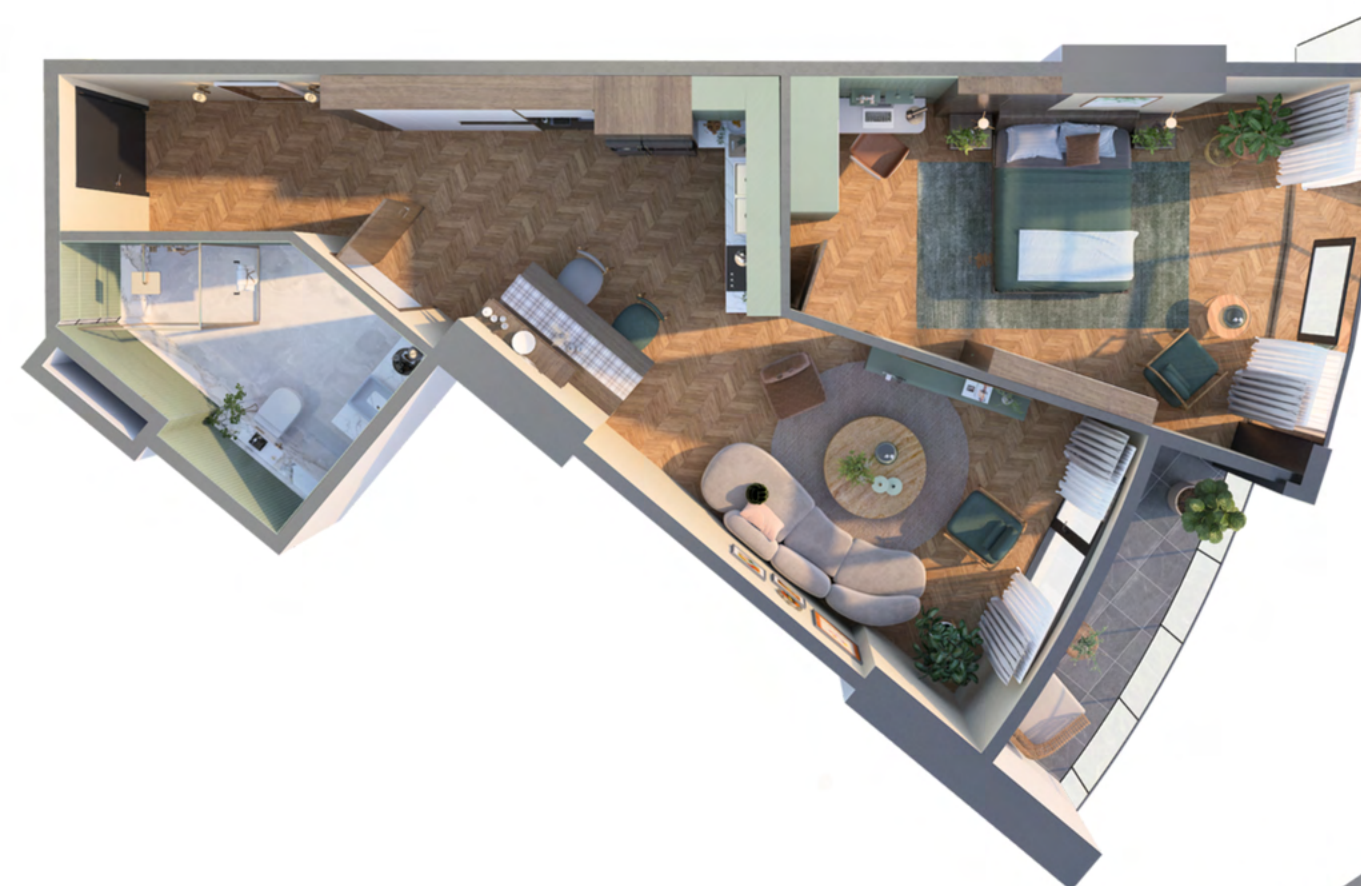


Apartment Details - Total Area: 67.65 m²

- Studio: 29.78 m²
- Bedroom 1: 13.40 m²
- Bedroom 2: 15.69 m²
- Bathroom: 4.43 m²
- Balcony: 4.35 m²

Apartment Number: #240; #340; #440; #540; #640; #740; #840; #940;
#1040; #1140; #1240; #1340; #1440; #1540; #1640; #1740; #1840

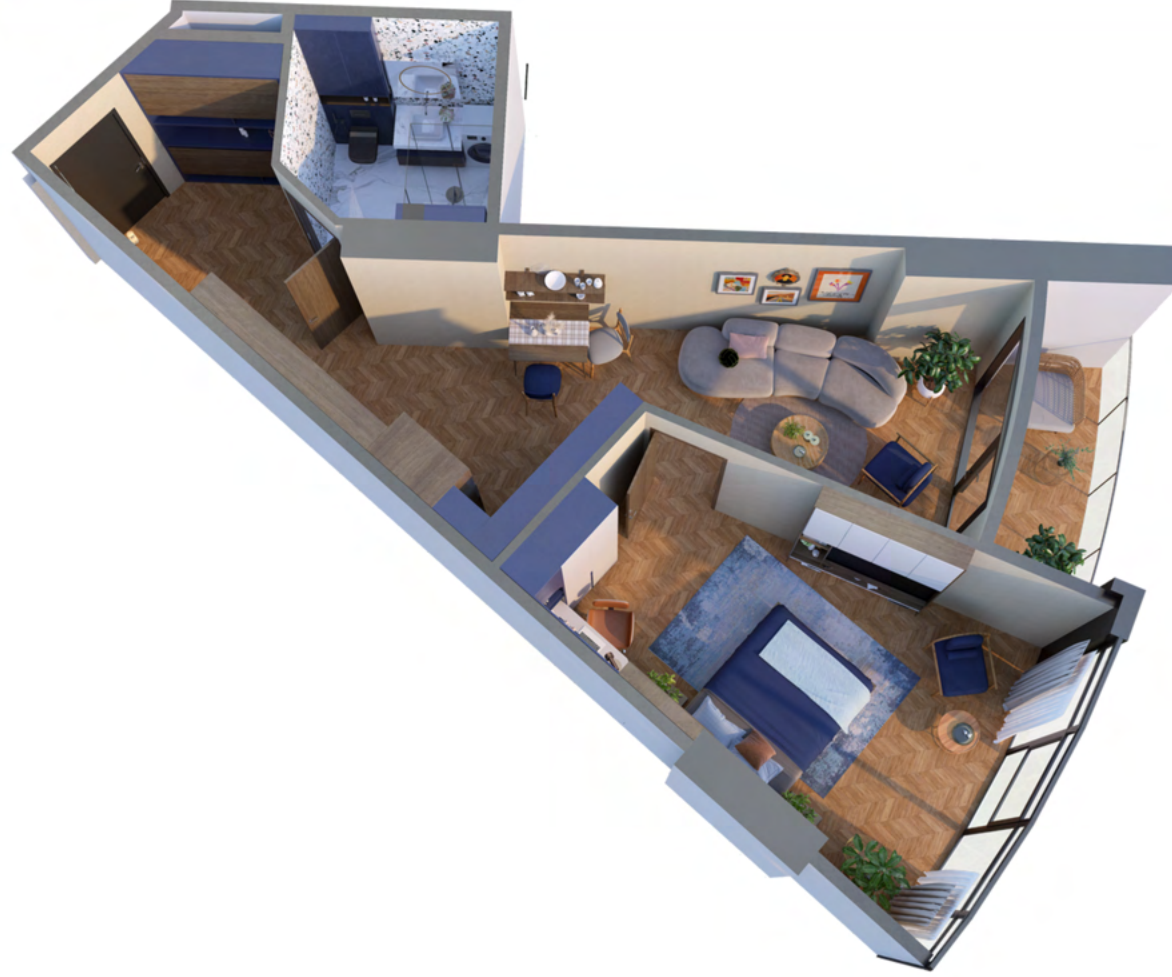




Apartment Details - Total Area: 64.8 m²

- Studio: 32.06 m²
- Bedroom: 19.51 m²
- Bathroom: 6.74 m²
- Balcony: 6.50 m²

Apartment Number: #212; #312; #412; #512; #612; #712; #812; #912;
#1012; #1112; #1212; #1312; #1412; #1512; #1612; #1712; #1812



Apartment Details - Total Area: 61.5 m²

- Studio: 30.03 m²
- Bedroom: 19.51 m²
- Bathroom: 6.23 m²
- Balcony: 6.73 m²

Apartment Number: #213; #313; #413; #513; #613; #713; #813; #913; #1013;
#1113; #1213; #1313; #1413; #1513; #1613; #1713; #1813



Apartment Details - Total Area: 61.23 m²

- Studio: 34.58 m²
- Bedroom: 16.05 m²
- Bathroom: 3.40 m²
- Balcony: 4.39 m²

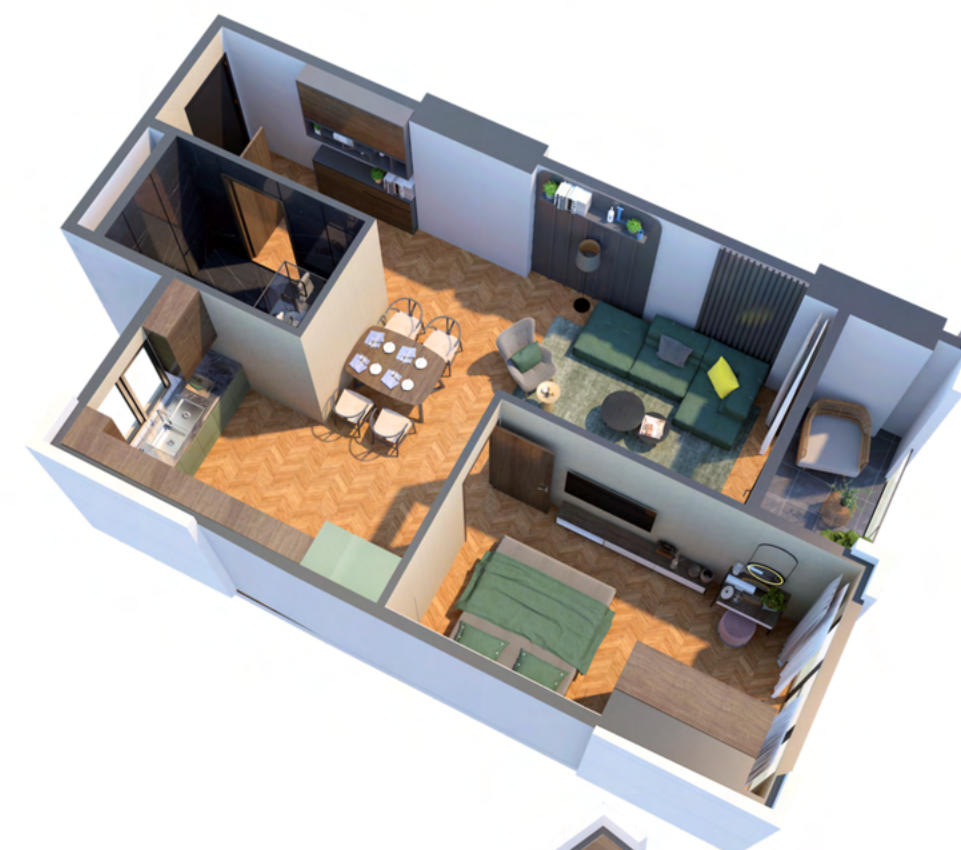
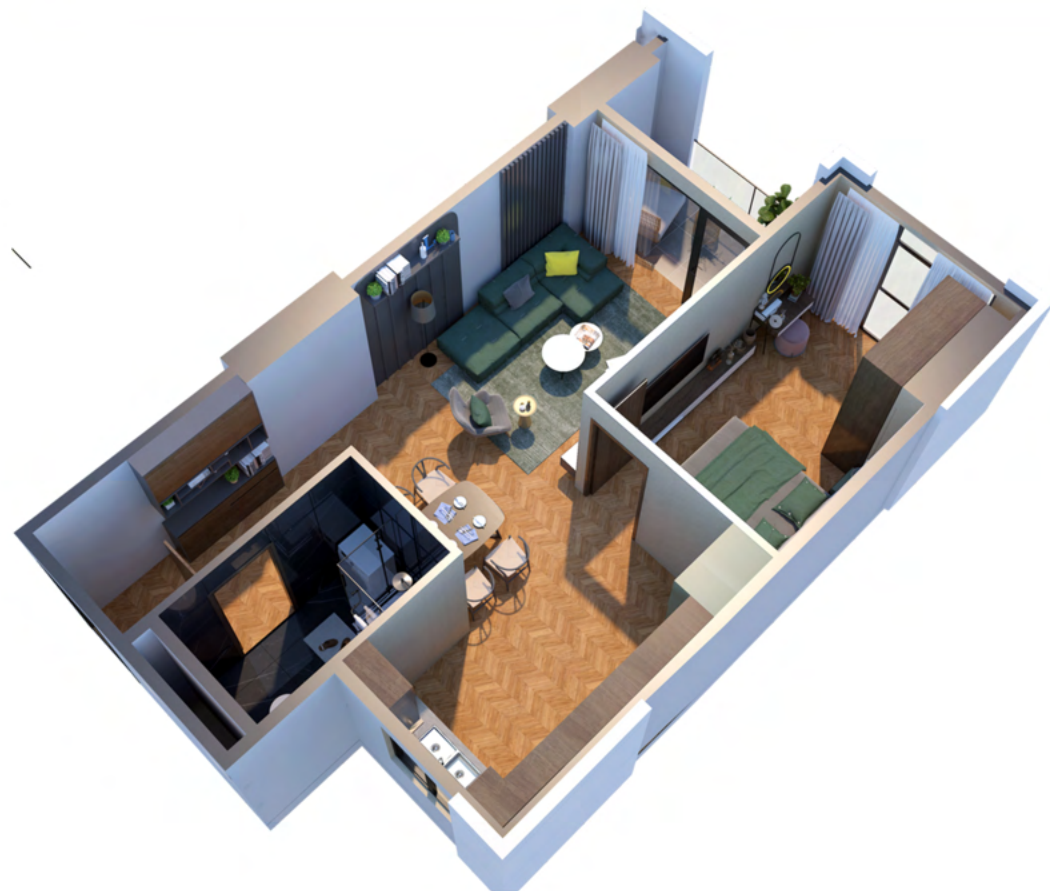
Apartment Number: #202; #302; #402; #502; #602; #702; #802; #902;
#1002; #1102; #1202; #1302; #1402; #1502; #1602; #1702; #1802



Apartment Details - Total Area: 59.42 m²

- Studio: 32.63 m²
- Bedroom: 16.98 m²
- Bathroom: 5.26 m²
- Balcony: 4.55 m²

Apartment Number: #211; #311; #411; #511; #611; #711; #811; #911;
#1011; #1111; #1211; #1311; #1411; #1511; #1611; #1711; #1811



Apartment Details - Total Area: 57.13 m²

- Studio: 34.52 m²
- Bedroom: 13.51 m²
- Bathroom: 4.76 m²
- Balcony: 4.34 m²

Apartment Number: #201; #301; #401; #501; #601; #701; #801;
#901; #1001; #1101; #1201; #1301; #1401; #1501; #1601; #1701; #1801





Apartment Details - Total Area: 29.96 m²

- Studio: 20.79 m²
- Bathroom: 4.83 m²
- Balcony: 4.34 m²

Apartment Number: #206; #306; #406; #506; #606; #706; #806;
#906; #1006; #1106; #1206; #1306; #1406; #1506; #1606; #1706; #1806



QUARTER CONCEPTION

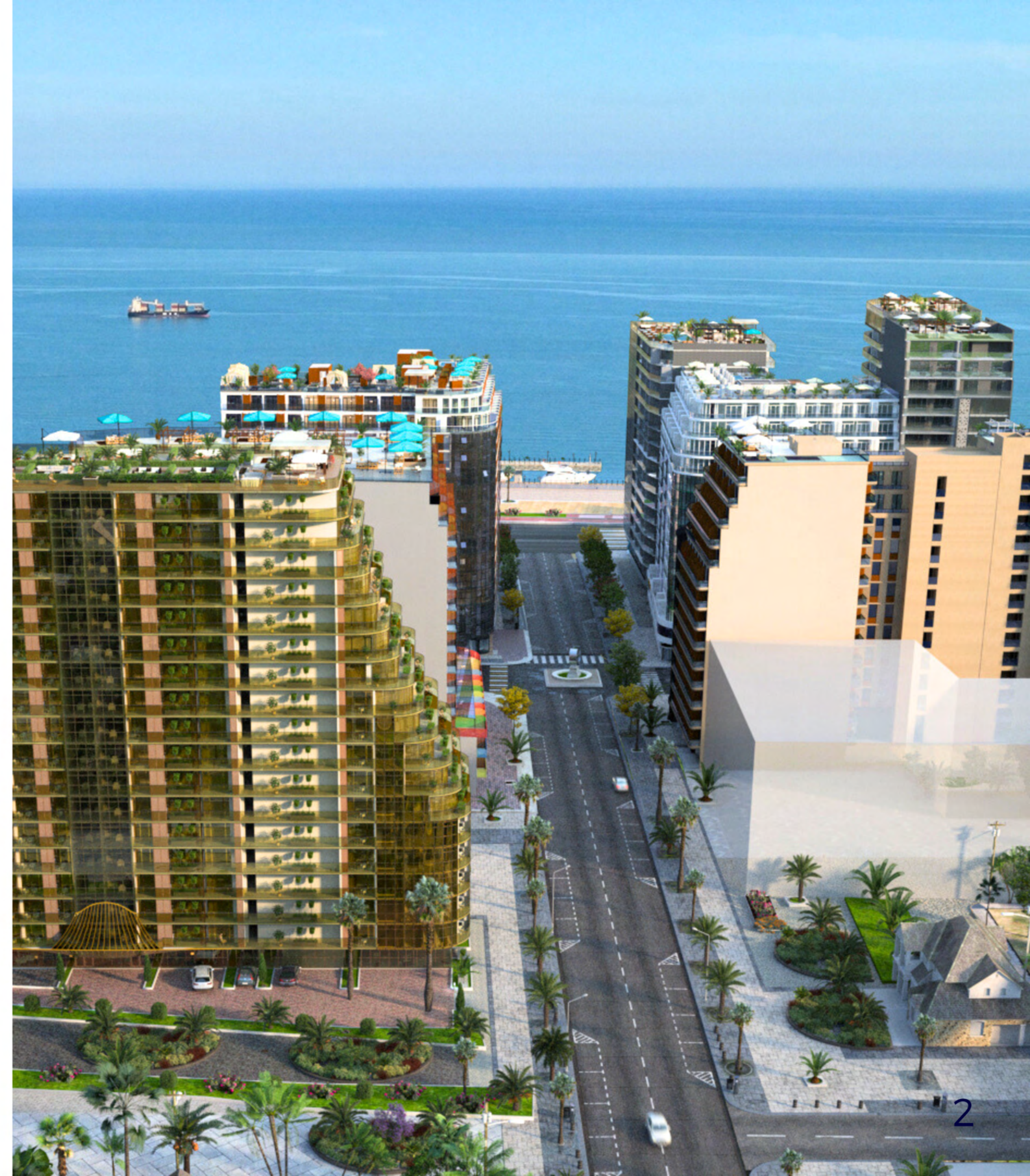
"The ELT Quarter is a large-scale project being constructed on a 7-hectare land in the new Batumi boulevard.

The development is being designed by globally renowned architects and designers in collaboration with Wyndham Hotels & Resorts. The vision of the development team is not only to provide apartments but also to create an innovative living environment and services.

By creating the "ELT Quarter," the company aims to introduce a new dimension to the concept of neighborhoods, which will ideally suit the fast-paced modern lifestyle of the 21st century.

The ELT Quarter will include internationally recognized partners such as:

- Barceló Group;
- River Rock Hotels & Resorts;
- IPM.





Monthly or quarterly
payment



Tailored, free internal
installment



Bank installment from
annual 5%



Payment with
cryptocurrency